



中文名字/  
德式吊环螺丝 DIN 580

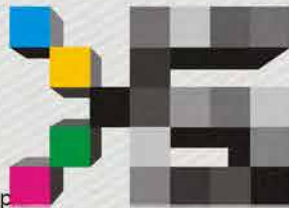
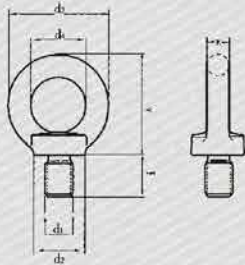
English Name/  
EYE BOLTS DIN 580

产品概要/ Product summary

**FINISH:BRIGHT OR GALVANIZED**

**WLL1\*/WLL2\*:APPROX.WLL FOR A PIECE TO HANG ON IN THE DIRECTION OF 1AND 2 SCREWS.**

剖面图/ Profile



# 翔盛五金

Xiangsheng Hardware | Qingdao China

中国·青岛

产品数据图/ Product data graph

MEASUREMENTS ACCORDING TO FIGURE (MM)							WLL2*	WLL1*	WEIGHT PER 100(KG.)
D1	D2	D3	D4	H	K	I	T	T	
M6	17	28	16	31	6	13	0.095	0.14	5
M8	20	36	20	36	8	13	0.095	0.14	6
M10	25	45	25	45	10	17	0.17	0.23	11
M12	30	54	30	53	12	20.5	0.24	0.36	18
M14	35	63	35	62	14	27	-	-	28
M16	35	63	35	62	14	27	0.5	0.7	28
M18	40	72	40	71	16	30	-	-	45
M20	40	72	40	71	16	30	0.83	1.2	45
M22	45	81	45	80.5	18	35	-	-	67
M24	50	90	50	90	20	36	1.27	1.8	87
M27	50	90	50	90	20	38	-	-	88
M30	65	108	60	109	24	45	2.6	3.6	166
M33	65	108	60	109	24	45	-	-	166
M36	75	126	70	128	28	54	3.7	5.1	265
M39	85	144	80	147	32	63	-	-	403
M42	85	144	80	147	32	63	5	7	403
M45	100	166	90	168	38	68	-	-	638
M48	100	166	90	168	38	68	6.1	8.6	638
M52	110	184	100	187	42	78	-	-	880
M56	110	184	100	187	42	78	8.3	11.5	880
M64	120	206	110	208	48	90	11	16	1240
M72	150	260	140	260	60	100	15	21	2330
M80	170	296	160	298	68	112	20	28	3420
M100	190	330	180	330	75	130	27	38	4910





## EYE NUT DIN 582

产品编号 XS-XK-2

**翔盛五金**

T/0532-87527369 87525178

T/0532-87527026

WWW.QDXIANGSHENG.COM



## 中文名字/ 德式吊环螺丝 DIN 582

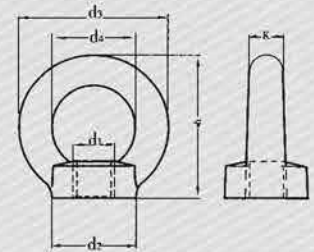
## English Name/ EYE NUT DIN582

产品概要/ Product summary

FINISH: BRIGHT OR GALVANIZED

WLL1\*/WLL2\*: APPROX. WLL FOR A PIECE TO  
HANG ON IN THE DIRECTION OF 1 AND 2 SCREWS.

剖面图/ Profile



产品数据图/ Product data graph

MEASUREMENTS ACCORDING TO FIGURE (MM)						WLL2*	WLL1*	WEIGHT PER
D1	D2	D3	D4	H	K	T	T	100(KG.)
M6	17	28	16	31	6	0.095	0.14	4.8
M8	20	36	20	36	8	0.095	0.14	5
M10	25	45	25	45	10	0.17	0.23	9
M12	30	54	30	53	12	0.24	0.36	16
M14	35	63	35	62	14	-	-	24
M16	35	63	35	62	14	0.5	0.7	24
M18	40	72	40	71	16	-	-	36
M20	40	72	40	71	16	0.83	1.2	36
M22	45	81	45	80.5	18	-	-	58
M24	50	90	50	90	20	1.27	1.8	72
M27	50	90	50	90	20	-	-	70
M30	65	108	60	109	24	2.6	3.6	132
M33	65	108	60	109	24	-	-	130
M36	75	126	70	128	28	3.7	5.1	208
M39	85	144	80	147	32	-	-	202
M42	85	144	80	147	32	5	7	311
M45	100	166	90	168	38	-	-	304
M48	100	166	90	168	38	6.1	8.6	502
M52	110	184	100	187	42	-	-	495
M56	110	184	100	187	42	8.3	11.5	669
M64	120	206	110	208	48	11	16	930
M72X6	150	260	140	260	60	15	21	1875
M80X6	170	296	160	298	68	20	28	2730
M100X6	190	330	180	330	75	27	38	3640





P  
3

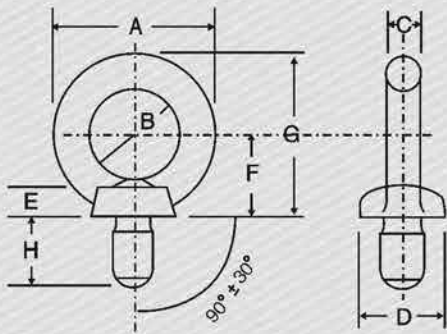
**EYE BOLTS JIS  
1168**  
产品编号 XS-XK-3

**翔盛五金**  
T/0532-87527369 87525178  
F/0532-87527026  
WWW.QDXIANGSHENG.COM

中文名字/  
**日式吊环螺丝 JIS 1168**

English Name/  
**EYE BOLTS JIS1168**

剖面图/ Profile



产品数据图/ Product data graph

SIZE(d)	M8	M10	M12	M16	M20	M24	M30	M36	M42	M48	M64	M80	M90	M100	
A	32.6	41	50	60	72	90	110	133	151	170	210	266	302	340	
B	20	25	30	35	40	50	60	70	80	90	110	140	160	180	
C	6.3	8	10	12.5	16	20	25	31.5	35.5	40	50	63	71	80	
D	16	20	25	30	35	45	60	70	80	90	110	130	150	170	
E	5	7	9	11	13	18	22	26	30	35	42	50	55	60	
F	17	21	26	30	35	45	55	65	75	85	105	130	150	165	
G	33.3	41.5	51	60	71	90	110	131.5	150.5	170	210	263	301	335	
H	15	18	22	27	30	38	45	55	65	70	90	105	120	130	
Safe Working Load kgf(KN)	Vertical	80	150	220	450	630	950	1500	2300	3400	4500	9000	15000	18000	20000
		0.785	1.47	2.16	4.41	6.18	9.32	14.7	22.6	33.3	44.1	88.3	147	177	196
	45°	80	150	220	450	630	950	1500	2300	3400	4500	9000	15000	18000	20000
		0.785	1.47	2.16	4.41	6.18	9.32	14.7	22.6	33.3	44.1	88.3	174	177	196



P  
4



EYE NUTS JIS  
1169

产品编号 XS-XK-4

翔盛五金

T/0532-87527369 87525178

T/0532-87527026

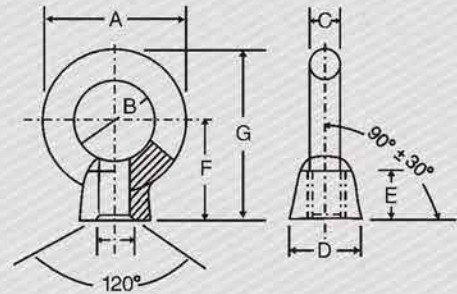
WWW.QDXIANGSHENG.COM



中文名字/  
日式吊环螺母 JIS 1169

English Name/  
EYE NUTS JIS1169

剖面图/ Profile



产品数据图/ Product data graph

SIZE(d)	M8	M10	M12	M16	M20	M24	M30	M36	M42	M48	M64	M80	
A	32.6	41	50	60	72	90	110	133	151	170	210	266	
B	20	25	30	35	40	50	60	70	80	90	110	140	
C	6.3	8	10	12.5	16	20	25	31.5	35.5	40	50	63	
D	16	20	25	30	35	45	60	70	80	90	110	130	
E	12	15	19	23	28	38	46	55	64	73	90	108	
F	23	28	36	42	50	66	80	95	109	123	151	184	
G	39.3	48.5	61	72	86	111	135	161.5	184.5	208	256	317	
Safe Working Load kgf(KN)	Vertical	80	150	220	450	630	950	1500	2300	3400	4500	9000	15000
		0.785	1.47	2.16	4.41	6.18	9.32	14.7	22.6	33.3	44.1	88.3	147
	45°	80	150	220	450	630	950	1500	2300	3400	4500	9000	15000
		0.785	1.47	2.16	4.41	6.18	9.32	14.7	22.6	33.3	44.1	88.3	147





REGULAR EYE  
BOLTS G-291

产品编号:XS-XK-5

翔盛五金

T/0532-87527369 87525178

F/0532-87527026

WWW.QDXIANGSHENG.COM

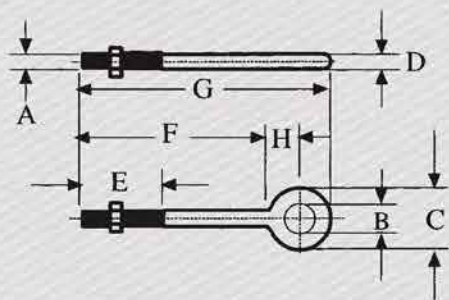
中文名字/

美式眼型螺丝G-291

English Name/

REGULAR EYE BOLTS G-291

剖面图/ Profile



产品数据图/ Product data graph

SHANK DIA.AND LENGTH(IN.)	WORKING LOAD LIMIT(LBS.)	WEIGHT PER (LBS.)	DIMENSIONS(IN.)								
			A	B	C	D	E	F	G	H	
1/4x2"	650	8.2	0.25	0.5	1	0.25	1.5	2	3.06	0.56	
1/4x4"	650	11.7	0.25	0.5	1	0.25	2.5	4	5.06	0.56	
5/16"x2"-1/4"	1200	13.3	0.31	0.52	1.25	0.31	1.5	2.25	3.56	0.69	
5/16"x4"-1/4"	1200	25	0.31	0.52	1.25	0.31	2.5	4.25	5.56	0.69	
3/8"x2"-1/2"	1550	23.3	0.38	0.75	1.5	0.38	1.5	2.5	4.12	0.88	
3/8"x4"-1/2"	1550	29.5	0.38	0.75	1.5	0.38	2.5	4.5	6.12	0.88	
3/8"x6"	1550	35.2	0.38	0.75	1.5	0.38	2.5	6	7.62	0.88	
1/2"x3"-1/4"	2600	50.3	0.5	1	2	0.5	1.5	3.25	5.38	1.12	
1/2"x6"	2600	66.1	0.5	1	2	0.5	3	6	8.12	1.12	
1/2"x8"	2600	82	0.5	1	2	0.5	3	8	10.12	1.12	
1/2"x10"	2600	88	0.5	1	2	0.5	3	10	12.12	1.12	
1/2"x12"	2600	114.2	0.5	1	2	0.5	3	12	14.12	1.12	
5/8"x4"	5200	103.1	0.62	1.25	2.5	0.62	2	4	6.69	1.44	
5/8"x6"	5200	118.2	0.62	1.25	2.5	0.62	3	6	8.69	1.44	
5/8"x8"	5200	135.1	0.62	1.25	2.5	0.62	3	8	10.69	1.44	
5/8"x10"	5200	153.6	0.62	1.25	2.5	0.62	3	10	12.69	1.44	
5/8"x12"	5200	167.1	0.62	1.25	2.5	0.62	4	12	14.69	1.44	
3/4"x4"1-2"	7200	168.6	0.75	1.5	3	0.75	2	4.5	7.69	1.69	
3/4"x6"	7200	184.5	0.75	1.5	3	0.75	3	6	9.19	1.69	
3/4"x8"	7200	207.9	0.75	1.5	3	0.75	3	8	11.19	1.69	
3/4"x10"	7200	235	0.75	1.5	3	0.75	3	10	13.19	1.69	
3/4"x12"	7200	257.5	0.75	1.5	3	0.75	4	12	15.19	1.69	
3/4"x15"	7200	298	0.75	1.5	3	0.75	5	15	18.19	1.69	
7/8"x5"	10600	270	0.88	1.75	3.5	0.88	2.5	5	8.75	2	
7/8"x8"	10600	308	0.88	1.75	3.5	0.88	4	8	11.75	2	
7/8"x12"	10600	400	0.88	1.75	3.5	0.88	4	12	15.75	2	
1"x6"	13300	421	1	2	4	1	3	6	10.31	2.31	
1"x9"	13300	468.5	1	2	4	1	4	9	13.31	2.31	
1"x12"	13300	540	1	2	4	1	4	12	16.31	2.31	
1"x18"	13300	650	1	2	4	1	7	18	22.31	2.31	
1-1/4"x8"	21000	750	1.25	2.5	5	1.25	4	8	13.38	2.88	
1-1/4"x12"	21000	900	1.25	2.5	5	1.25	4	12	17.38	2.88	
1-1/4"x20"	21000	1210	1.25	2.5	5	1.25	6	20	25.38	2.88	



P  
6



EYE BOLTS BOLTS  
G-279

产品编号 XS-XK-6

翔盛五金

T/0532-87527369 87525178

T/0532-87527026

WWW.QDXIANGSHENG.COM



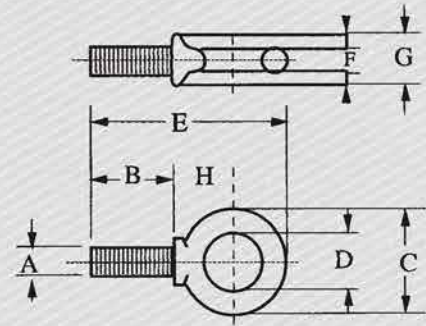
中文名字/

美式眼型螺丝G-279

English Name/

SHOULDER TYPE EYE BOLTS BOLTS G-279

剖面图/ Profile



产品数据图/ Product data graph

SIZE	WORKING LOAD LIMIT(T.)	WEIGHT EACH(KG.)	DIMENSIONS(MM.)						
			A* THREAD	B	C	D	E	F	G
6.35X25.4	0.29	0.02	1/4-20	25.9	28.7	19.1	58	4.85	13.5
7.94X28.6	0.54	0.04	5/16-18	29.2	35.1	22.4	69.5	6.35	15
9.53X31.8	0.7	0.06	3/8-16	32.3	41.1	25.4	78	7.85	17.5
12.7X38.1	1.18	0.12	1/2-13	38.9	49.5	30.2	94	9.65	23.1
15.9X44.5	2.35	0.24	5/8-11	45.5	60.5	35.1	113	12.7	28.7
19.1X51	3.26	0.43	3/4-10	52	70	38.1	129	16	35.1
22.2X57	4.08	0.7	7/8-9	58.5	82.5	44.5	149	19.1	39.6
25.4X63.5	6.03	1.1	1-8	65.5	95.5	51	169	22.4	46
31.8X76	9.52	1.8	1-1/4-7	78.5	114	63.5	202	25.4	58
38.1X89	10.8	3.2	1-1/2-6	91.5	140	76	241	31.8	70





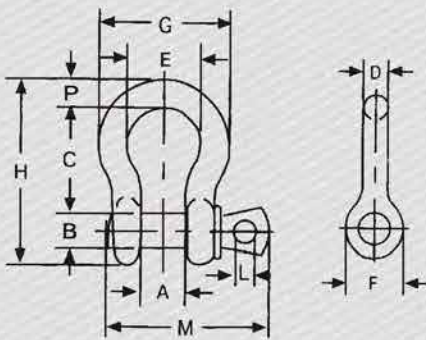
中文名字/

**美式高强度卸扣G-209 S-209**

English Name/

**SCREW PIN ANCHOR SHACKLE G-209 S-209**

剖面图/ Profile



产品数据图/ Product data graph

NOMINAL SIZE (IN)	WORKING LOAD LIMIT (T)	WEIGHT EACH (KG)	DIMENSIONS (MM)												TOLERANCE +/-	
			A	B	C	D	E	F	G	H	L	M	P	C	A	
3/16	1/3	0.03	9.65	6.35	22.40	4.85	15.20	14.20	24.90	37.30	4.06	28.40	4.85	1.50	1.50	
1/4	1/2	0.05	11.90	7.85	28.70	6.35	19.80	15.50	32.50	46.70	4.85	35.10	6.35	1.50	1.50	
5/16	3/4	0.09	13.50	9.65	31.00	7.85	21.30	19.10	37.30	53.00	5.60	42.20	7.85	3.30	1.50	
3/8	1	0.14	16.80	11.20	36.60	9.65	26.20	23.10	45.20	63.00	6.35	51.50	9.65	3.30	1.50	
7/16	1-1/2	0.17	19.10	12.70	42.90	11.20	29.50	26.90	51.50	74.00	7.85	60.50	11.20	3.30	1.50	
1/2	2	0.33	20.60	16.00	47.80	12.70	33.30	30.20	58.50	83.50	9.65	68.50	12.70	3.30	1.50	
5/8	3-1/4	0.62	26.90	19.10	60.50	16.00	42.90	38.10	74.50	106.00	11.20	85.00	17.50	6.35	1.50	
3/4	4-3/4	1.07	31.80	22.40	71.50	19.10	51.00	46.00	89.00	126.00	12.70	101.00	20.60	6.35	1.50	
7/8	6-1/2	1.64	36.60	25.40	84.00	22.40	58.00	53.00	102.00	148.00	12.70	114.00	24.60	6.35	1.50	
1	8-1/2	2.28	42.90	28.70	95.50	25.40	68.50	60.50	119.00	167.00	14.20	129.00	26.90	6.35	1.50	
1-1/8	9-1/2	3.36	46.00	31.80	108.00	29.50	74.00	68.50	131.00	190.00	16.00	142.00	31.80	6.35	1.50	
1-1/4	12	4.31	51.50	35.10	119.00	32.80	82.50	76.00	146.00	210.00	17.50	156.00	35.10	6.35	1.50	
1-3/8	13-1/2	6.14	57.00	38.10	133.00	36.10	92.00	84.00	162.00	233.00	19.10	174.00	38.10	6.35	3.30	
1-1/2	17	7.8	60.50	41.40	146.00	39.10	98.50	92.00	175.00	254.00	20.60	187.00	41.10	6.35	3.30	
1-3/4	25	12.6	73.00	51.00	178.00	46.70	127.00	106.00	225.00	313.00	25.40	231.00	57.00	6.35	3.30	
2	35	20.4	82.50	57.00	197.00	53.00	146.00	122.00	253.00	348.00	31.00	263.00	61.00	6.35	3.30	
2-1/2	55	38.9	105.00	70.00	267.00	69.00	184.00	145.00	327.00	453.00	35.10	330.00	79.50	6.35	6.35	

NOTE: MAXIMUM PROOF LOAD IS 2.0 TIMES THE WORKING LOAD LIMIT. MINIMUM ULLIMATE STRENGTH IS 6 TIMES THE WORKING LOAD LIMIT. FOR WORKING LOAD LIMIT REDUCTION DUE TO SIDE LOADING APPLICATIONS.

P  
7

**SCREW PIN ANCHOR SHACKLE G-209 S-209**

产品编号 XS-XK-7

**翔盛五金**  
 T/0532-87527369 87525178  
 F/0532-87527026  
 WWW.QDXIANSHENG.COM





SCREW PIN ANCHOR SHACKLE G-210 S-210

产品编号 XS-XK-8

翔盛五金

T/0532-87527369 87525178

T/0532-87527026

WWW.QDXIANGSHENG.COM



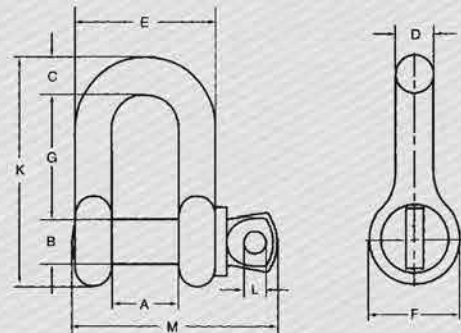
中文名字/

美式高强度卸扣G-210 S-210

English Name/

SCREW PIN ANCHOR SHACKLE G-210 S-210

剖面图/ Profile



产品数据图/ Product data graph

NOMIN AL SIZE (IN)	WORKIN G LOAD LIMIT (T)	WEIGHT EACH (KG)	DIMENSIONS (MM)										TOLERANCE +/-	
			A	B	C	D	E	F	G	K	L	M	G	A
1/4	1/2	0.05	11.90	7.85	6.35	6.35	24.60	15.50	22.40	40.40	4.85	35.10	1.50	1.50
5/16	3/4	0.08	13.50	9.65	7.85	7.85	29.50	19.10	26.20	48.50	5.60	42.20	1.50	1.50
3/8	1	0.13	16.80	11.20	9.65	9.65	35.80	23.10	31.80	58.50	6.35	51.50	3.30	1.50
7/16	1-1/2	0.20	19.10	12.70	11.20	11.20	41.40	26.90	36.60	67.50	7.85	60.50	3.30	1.50
1/2	2	0.27	20.60	16.00	12.70	12.70	46.00	30.20	41.40	77.00	9.65	68.50	3.30	1.50
5/8	3-1/4	0.57	26.90	19.10	15.70	16.00	58.50	38.10	51.00	95.50	11.20	85.00	3.30	1.50
3/4	4-3/4	1.20	31.80	22.40	20.60	19.10	70.00	46.00	60.50	115.00	12.70	101.00	6.35	1.50
7/8	6-1/2	4.13	36.60	25.40	24.60	22.40	81.00	53.00	71.50	135.00	12.70	114.00	6.35	1.50
1	8-1/2	2.15	42.90	28.70	25.40	25.40	93.50	60.50	81.00	151.00	14.20	129.00	6.35	1.50
1-1/8	9-1/2	3.06	46.00	31.80	31.80	28.70	103.00	68.50	91.00	172.00	16.00	142.00	6.35	1.50
1-1/4	12	4.11	51.50	35.10	35.10	31.80	115.00	76.00	100.00	191.00	17.50	156.00	6.35	3.30
1-3/8	13-1/2	5.28	57.00	38.10	38.10	35.10	127.00	84.00	111.00	210.00	19.10	174.00	6.35	3.30
1-1/2	17	7.23	60.50	41.40	41.10	38.10	137.00	92.00	122.00	230.00	20.60	187.00	6.35	3.30
1-3/4	25	12.10	73.00	51.00	54.00	44.50	162.00	106.00	146.00	279.00	25.40	231.00	6.35	3.30
2	35	19.20	82.50	57.00	51.00	51.00	184.00	122.00	172.00	312.00	31.00	263.00	6.35	3.30
2-1/2	55	32.50	105.00	70.00	66.50	66.50	238.00	145.00	203.00	377.00	35.10	330.00	6.35	6.35

NOTE: MAXIMUM PROOF LOAD IS 2.0 TIMES THE WORKING LOAD LIMIT. MINIMUM UL TIMATE STRENGTH IS 6 TIMES THE WORKING LOAD LIMIT. FOR WORKING LOAD LIMIT REDUCTION DUE TO SIDE LOADING APPLICATIONS.





P  
9



**BOLT TYPE ANCHOR SHACKLES G-2130 S-2130**

产品编号/XS-XK-9

**翔盛五金**  
 T/0532-87527369 87525178  
 F/0532-87527026  
 WWW.QDXIANGSHENG.COM

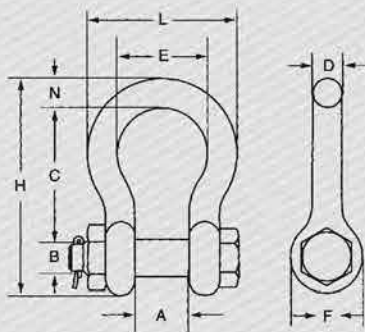
中文名字/

**美式高强度卸扣G-2130 S-2130**

English Name/

**BOLT TYPE ANCHOR SHACKLES G-2130 S-2130**

剖面图/ Profile



产品数据图/ Product data graph

NOMINAL SIZE (IN)	WORKING LOAD LIMIT (T)	WEIGHT EACH (KG)	DIMENSIONS (MM)									TOLERANCE +/-	
			A	B	C	D	E	F	H	L	N	G	A
3/16	1/3	0.03	9.65	6.35	22.40	4.85	15.20	14.20	37.30	24.90	4.85	1.50	1.50
1/4	1/2	0.05	11.90	7.85	28.70	6.35	19.80	15.50	46.70	32.50	6.35	1.50	1.50
5/16	3/4	0.10	13.50	9.65	31.00	7.85	21.30	19.10	53.00	37.30	7.85	3.30	1.50
3/8	1	0.15	16.80	11.20	36.60	9.65	26.20	23.10	63.00	45.20	9.65	3.30	1.50
7/16	1-1/2	0.22	19.10	12.70	42.90	11.20	29.50	26.90	74.00	51.50	11.20	3.30	1.50
1/2	2	0.36	20.60	16.00	47.80	12.70	33.30	30.20	83.50	58.50	12.70	3.30	1.50
5/8	3-1/4	0.76	26.90	19.10	60.50	16.00	42.90	38.10	106.00	74.50	17.50	6.35	1.50
3/4	4-3/4	1.23	31.80	22.40	71.50	19.10	51.00	46.00	126.00	89.00	20.60	6.35	1.50
7/8	6-1/2	1.79	36.60	25.40	84.00	22.40	58.00	53.00	148.00	102.00	24.60	6.35	1.50
1	8-1/2	2.57	42.90	28.70	95.50	25.40	68.50	60.50	167.00	119.00	26.90	6.35	1.50
1-1/8	9-1/2	3.75	46.00	31.80	108.00	28.70	74.00	68.50	190.00	131.00	31.80	6.35	3.30
1-1/4	12	5.31	51.50	35.10	119.00	31.80	82.50	76.00	210.00	146.00	35.10	6.35	3.30
1-3/8	13-1/2	7.18	57.00	38.10	133.00	35.10	92.00	84.00	233.00	162.00	38.10	6.35	3.30
1-1/2	17	9.43	60.50	41.40	146.00	38.10	98.50	92.00	254.00	175.00	41.10	6.35	3.30
1-3/4	25	15.40	73.00	51.00	178.00	44.50	127.00	106.00	313.00	225.00	57.00	6.35	3.30
2	35	23.70	82.50	57.00	197.00	51.00	146.00	122.00	348.00	253.00	61.00	6.35	6.35
2-1/2	55	44.6	105.00	70.00	267.00	66.50	184.00	145.00	453.00	327.00	79.50	6.35	6.35
3	85	70	127.00	82.50	330.00	76.00	200.00	165.00	546.00	365.00	92.00	6.35	6.35
3-1/2	120	120	133.00	95.50	372.00	92.00	229.00	203.00	626.00	419.00	105.00	6.35	6.35
4	150	153	140.00	108.00	368.00	104.00	254.00	229.00	653.00	468.00	116.00	6.35	6.35

NOTE: MAXIMUM PROOF LOAD IS 2.0 TIMES THE WORKING LOAD LIMIT. MINIMUM ULTIMATE STRENGTH IS 6 TIMES THE WORKING LOAD LIMIT. FOR WORKING LOAD LIMIT REDUCTION DUE TO SIDE LOADING APPLICATIONS.



P  
10



BOLT TYPE ANCHOR  
SHACKLES G-2150  
S-2150  
产品编号 XS-XK-10

翔盛五金

T/0532-87527369 87525178  
T/0532-87527026

WWW.QDXIANGSHENG.COM



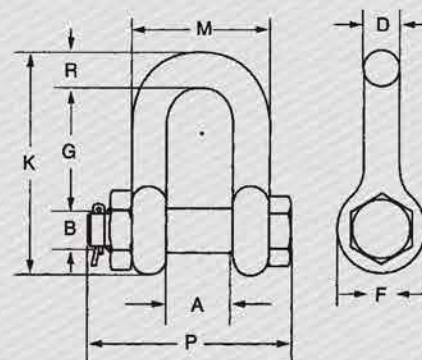
中文名字/

美式高强度卸扣 G-2150 S-2150

English Name/

BOLT TYPE ANCHOR SHACKLES G-2150 S-2150

剖面图/ Profile



产品数据图/ Product data graph


NOMINAL SIZE (IN)	WORKING LOAD LIMIT (T)	WEIGHT EACH (KG)	DIMENSIONS (MM)									TOLERANCE +/-	
			A	B	D	F	G	K	M	P	R	G	A
1/4	1/2	0.06	11.90	7.85	6.35	15.50	19.10	40.40	24.60	39.60	6.35	1.50	1.50
5/16	3/4	0.10	13.50	9.65	7.85	19.10	25.40	48.50	29.50	46.20	7.85	1.50	1.50
3/8	1	0.15	16.80	11.20	9.65	23.10	31.00	58.50	35.80	55.00	9.65	3.30	1.50
7/16	1-1/2	0.22	19.10	12.70	11.20	26.90	36.10	67.50	41.10	63.50	11.20	3.30	1.50
1/2	2	0.34	20.60	16.00	12.70	30.20	41.40	77.00	46.00	71.00	12.70	3.30	1.50
5/8	3-1/4	0.67	26.90	19.10	16.00	38.10	51.00	95.50	58.50	89.50	16.00	3.30	1.50
3/4	4-3/4	1.14	31.80	22.40	19.10	46.00	60.50	115.00	70.00	103.00	20.60	6.35	1.50
7/8	6-1/2	1.74	36.60	25.40	22.40	53.00	71.50	135.00	81.00	120.00	24.60	6.35	1.50
1	8-1/2	2.52	42.90	28.70	25.40	60.50	81.00	151.00	93.50	135.00	25.40	6.35	1.50
1-1/8	9-1/2	3.45	46.00	31.80	28.70	68.50	91.00	172.00	103.00	150.00	31.80	6.35	1.50
1-1/4	12	4.90	51.50	35.10	31.80	76.00	100.00	191.00	115.00	165.00	35.10	6.35	3.30
1-3/8	13-1/2	6.24	57.00	38.10	35.10	84.00	111.00	210.00	127.00	183.00	38.10	6.35	3.30
1-1/2	17	8.39	60.50	41.40	38.10	92.00	122.00	230.00	137.00	196.00	41.10	6.35	3.30
1-3/4	25	14.20	73.00	51.00	44.50	106.00	146.00	279.00	162.00	230.00	54.00	6.35	3.30
2	35	21.20	82.50	57.00	51.00	122.00	172.00	312.00	184.00	264.00	51.00	6.35	3.30
2-1/2	55	38.60	105.00	70.00	66.50	145.00	203.00	377.00	238.00	344.00	66.50	6.35	6.35
3	85	56	127.00	82.50	76.00	165.00	216.00	429.00	279.00	419.00	89.00	6.35	6.35

NOTE: MAXIMUM PROOF LOAD IS 2.0 TIMES THE WORKING LOAD LIMIT. MINIMUM UL TIMATE STRENGTH IS 6 TIMES THE WORKING LOAD LIMIT. FOR WORKING LOAD LIMIT REDUCTION DUE TO SIDE LOADING APPLICATIONS.





P  
11



**JIS COMMERCIAL  
STANDARD  
SHACKLE**

产品型号 XS-XK-11

**翔盛五金**  
T/0532-87527369 87525178  
F/0532-87527026  
WWW.QDXIANGSHENG.COM

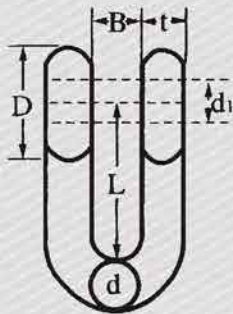
中文名字/

**日式卸扣**

English Name/

**JIS COMMERCIAL STANDARD SHACKLE**

剖面图/ Profile



产品数据图/ Product data graph

Nominal size		B	D	L	d1	WLL	WEIGHT EACH(KG)
mm	in						
4.8	3/16	10.00	10.00	18.50	5.00	0.09	0.014
6	1/4	12.00	11.00	25.00	6.50	0.15	0.028
8	5/16	14.00	15.00	31.00	8.50	0.25	0.049
9	3/8	18.00	17.00	36.00	10.00	0.40	0.049
12	1/2	24.00	23.00	46.00	13.00	0.60	0.18
16	5/8	30.00	32.00	59.00	17.00	1.10	0.42
19	3/4	36.00	37.00	74.00	20.00	1.60	0.72
22	7/8	43.00	43.00	86.00	23.00	2.50	1.18
25	1	47.00	50.00	95.00	27.00	3.00	1.8
28	1-1/8	55.00	56.00	110.00	30.00	3.50	2.5
32	1-1/4	64.00	64.00	130.00	34.00	4.50	3.7
38	1-1/2	76.00	76.00	145.00	40.00	6.00	6.1
44	1-3/4	80.00	90.00	160.00	47.00	8.50	-
50	2	90.00	100.00	185.00	53.00	10.00	-
65	2-1/2	110.00	130.00	240.00	68.00	18.00	-
75	3	120.00	150.00	300.00	78.00	24.00	-

NOTE:MATERIAL:MILD CARBON STEEL & STAINLESS STEEL ANSI 304/316





EUROPE TYPE LARGE BOW SHACKLES

产品型号/XS-XK-12

翔盛五金

T/0532-87527369 87525178

T/0532-87527026

WWW.QDXIANGSHENG.COM



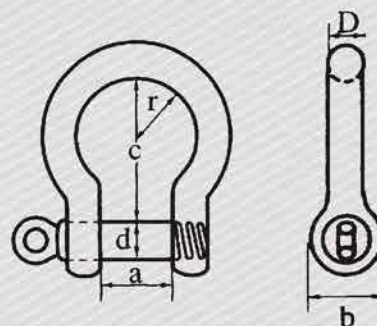
中文名字/

欧式弓型卸扣

English Name/

EUROPE TYPE LARGE BOW SHACKLES

剖面图/ Profile



产品数据图/ Product data graph

LARGE BOW SHACKLES							
SWL	D	d	a	c	r	b	WEIGHE PER 100 PCS (KG)
kg	mm	mm	mm	mm	mm	mm	
80	5	5	10	19	8	11	1.9
100	6	6	13	25	10	14	3.4
200	8	8	16	32	12	18	7
320	10	10	19	38	16	20	13
520	12	12	25	51	19	26	26
800	16	16	32	64	28	33	50
1100	20	20	38	76	33	40	80
1500	22	22	44	89	37	50	130
2100	25	25	51	100	40	57	200
3000	28	28	57	115	47	68	310
3500	32	32	64	127	52	73	430
5000	38	38	76	152	63	85	700
7000	45	45	90	180	75	96	1250
8000	50	50	102	200	78	108	1750





P  
13



**EUROPE TYPE  
LARGE DEE  
SHACKLES**

产品编号 XS-XK-13

**翔盛五金**  
T/0532-87527369 87525178  
F/0532-87527026  
WWW.QDXIANGSHENG.COM

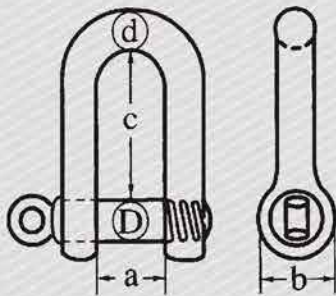
中文名字/

**欧式D型卸扣**

English Name/

**EUROPE TYPE LARGE DEE SHACKLES**

剖面图/ Profile



产品数据图/ Product data graph

LARGE DEE SHACKLES						
SWL	D	d	a	c	b	WEIGHE PER 100 PCS (KG)
kg	mm	mm	mm	mm	mm	
80	5	5	10	19	11	1.85
100	6	6	13	25	14	3.4
200	8	8	16	32	18	7
320	10	10	19	38	20	13
520	12	12	25	51	26	26
800	16	16	32	64	33	50
1100	20	20	38	76	40	80
1500	22	22	44	89	50	130
2100	25	25	51	100	57	200
3000	28	28	57	115	68	310
3500	32	32	64	127	73	430
5000	38	38	76	152	85	700
7000	45	45	90	180	96	1250
8000	50	50	102	200	108	1750



P  
14



## 重型卸扣

产品编号/XS-XK-14

**翔盛五金**

T/0532-87527369 87525178

T/0532-87527026

WWW.QDXIANGSHENG.COM

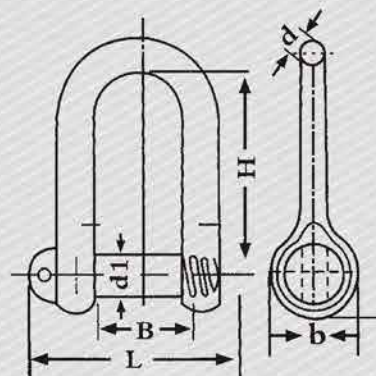


中文名字/

**重型卸扣**

English Name/

剖面图/ Profile



产品数据图/ Product data graph

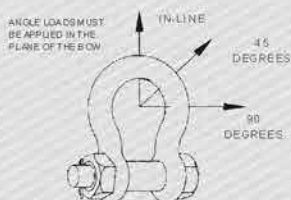
卸扣吨号	工作负荷 ( 千 克 )	适用钢丝绳	横销螺纹	卸扣本体	横销全长	环孔间距	环孔高度
		最大直径(MM)	D1	d	L	B	H
0.2	200	4.7	M8	6	35	12	35
0.3	330	6.5	M10	8	44	16	45
0.5	500	8.5	M12	10	55	20	50
0.9	930	9.5	M16	12	65	65	60
1.4	1450	13	M20	16	86	32	80
2.1	2100	15	M24	20	101	36	90
2.7	2700	17.5	M27	22	111	40	100
3.3	3300	19.5	M30	24	123	45	110
4.1	4400	22	M33	27	137	50	120
4.9	4900	26	M36	30	153	58	130
6.8	6800	28	M42	36	1756	67	150
9	9800	31	M48	42	197	70	170
10.7	10700	34	M52	45	218	80	190
16	16000	43.5	M64	52	262	100	235
21	24000	43.5	M76	65	321	130	256



# 卸扣的使用方法

## USE METHOD SHACKLES

ANGLE LOADS MUST BE APPLIED IN THE PLANE OF THE BOW.



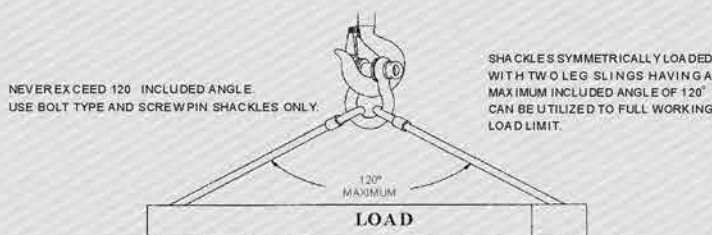
SIDE LOADING REDUCTION CHART FOR SCREW PIN AND BOLT TYPE SHACKLES ONLY	
ANGLE OF SIDE LOAD FROM VERTICAL IN-LINE OF SHACKLE	ADJUSTED WORKING LOAD LIMIT
0° IN-LINE°	100% OF RATED WORKING LOAD LIMIT
45° FROM IN-LINE°	70% OF RATED WORKING LOAD LIMIT
90° FROM IN-LINE°	50% OF RATED WORKING LOAD LIMIT

IN-LINE LOAD IS APPLIED PERPENDICULAR TO PIN.  
DO NOT SIDE LOAD ROUND PIN SHACKLES.

使用时请注意如下：正常的使用角度应该是与卸扣柱垂直的角度如图：

角度范围与额定负荷拉力对比

1. 正常角度 100% 的额定负荷拉力
2. 45 角度时 70% 的额定负荷拉力
3. 90 角度时 50% 的额定负荷拉力



1. 绝对不能超过 120°（包括 120°）并且只能用带保险螺母柱的卸扣角度不允许超过 120°。两侧的拉力必须相等。
2. 物体的重量必须小于卸扣，卡头、花兰螺丝单个的额定负荷，并且尽量避免使用拉力的边缘。

注意：试验证书上所标的变形负荷及破断负荷为破坏性拉力试验，在实际使用中不应作为使用负荷。对未按以上规定使用及使用不当（使用不当包括安装不当，滥用以及使用错误的拉力范围）引起的财产损失及人身伤亡等，生产厂家无需承担责任。

<p><b>WIRE ROPE SLINGS AND CONNECTIONS TO FITTINGS</b></p> <p>USE A THIMBLE TO PROTECT SLING AND TO INCREASE D<sub>66</sub></p> <p>NEVER PLACE EYE OVER A FITTING SMALLER DIAMETER OR WIDTH THAN THE ROPE'S DIAMETER</p>		<p><b>WIRE ROPE SLINGS AND CONNECTIONS TO FITTINGS</b></p> <p>NEVER PLACE A SLING EYE OVER A FITTING WITH A DIAMETER OR WIDTH GREATER THAN ONE HALF THE NATURAL LENGTH OF THE EYE</p>	
<p><b>SYNTHETIC SLINGS RATED LOAD</b></p> <p>FOLDING, BUNCHING OR PINCHING OF SYNTHETIC SLINGS WHICH OCCURS WHEN USED WITH SHACKLES, HOOKS OR OTHER APPLICATIONS WILL REDUCE THE RATED LOAD.</p> <p>BUNCHING</p> <p>PINCHING</p> <p>ANSI B30.9-1999</p>	<p><b>CHOKER HITCH FORMED</b></p> <p>WITH SHACKLES:  WRONG!</p> <p>PLACE PIN IN EYE OF SLING</p> <p>CORRECT! </p> <p>WITH CHOKER: </p> <p>HOOK</p>		<p><b>SHACKLES POINT LOADING</b></p> <p>POINT LOADING OF CROSBY SHACKLE BOWS IS ACCEPTABLE</p> <p>POINT LOADING OF CROSBY SHACKLE PINS IS ACCEPTABLE AS LONG AS LOAD IS REASONABLY CENTERED ON THE PIN</p> <p>ALTHOUGH POINT LOADING IS ACCEPTABLE A PAD EYE WIDTH OF 80% OR MORE OF SHACKLE SPREAD IS BEST PRACTICE</p>





**HOOK & HOOK  
TURNBUCKLES  
HG-223**

产品编号 XS-XK-16

**翔盛五金**

T/0532-87527369 87525178  
T/0532-87527026

WWW.QDXIANGSHENG.COM



中文名字/  
**美式锻造花兰**

English Name/  
**HOOK & HOOK TURNBUCKLES HG-223**

剖面图/ Profile



产品数据图/ Product data graph

THREAD DIA&TAKE UP(IN.)	WORKING LOAD LIMIT(LBS.)	WEIGHT EACH (LBS.)	DIMENSIONS(IN.)								
			A	D	E CLOSED	F	J OPEN	K CLOSED	M OPEN	N CLOSED	BB
1/4x4	400	0.30	0.25	0.45	1.59	1.27	11.12	7.12	11.94	7.94	4.00
5/16x4-1/2	700	0.47	0.31	0.50	1.94	1.50	12.81	8.31	13.81	9.31	4.50
3/8x6	1000	0.78	0.38	0.56	2.30	1.77	16.50	10.50	17.72	11.72	6.00
1/2x6	1500	1.60	0.50	0.66	2.94	2.28	18.82	11.82	20.38	13.38	6.00
1/2x9	1500	1.83	0.50	0.66	2.94	2.28	24.82	14.82	26.38	16.38	9.00
1/2x12	1500	2.28	0.50	0.66	2.94	2.28	30.82	17.82	32.38	19.38	12.00
5/8x6	2250	2.75	0.63	0.90	3.69	2.81	20.50	13.25	22.50	15.25	6.00
5/8x9	2250	3.38	0.63	0.90	3.69	2.81	26.50	16.25	28.50	18.25	9.00
5/8x12	2250	3.50	0.63	0.90	3.69	2.81	32.50	19.25	34.50	21.25	12.00
3/4x6	3000	3.89	0.75	0.98	4.52	3.33	22.38	14.88	24.78	17.28	6.00
3/4x9	3000	5.28	0.75	0.98	4.52	3.33	28.38	17.88	30.78	20.28	9.00
3/4x12	3000	5.43	0.75	0.98	4.52	3.33	34.38	20.88	36.78	23.28	12.00
3/4x18	3000	8.12	0.75	0.98	4.52	3.33	46.38	26.88	48.78	29.28	18.00
7/8x12	4000	8.10	0.88	1.13	5.19	3.78	36.00	22.25	38.75	25.00	12.00
7/8x18	4000	9.95	0.88	1.13	5.19	3.78	48.00	28.25	50.75	31.00	18.00
1x6	5000	9.33	1.00	1.25	5.84	4.25	25.63	17.63	28.69	20.69	6.00
1x12	5000	11.93	1.00	1.25	5.84	4.25	37.63	23.63	40.69	26.69	12.00
1x18	5000	14.00	1.00	1.25	5.84	4.25	49.63	29.63	52.69	32.69	18.00
1x24	5000	17.25	1.00	1.25	5.84	4.25	61.63	35.63	64.69	38.69	24.00
1-1/4x12	6500	20.58	1.25	1.50	7.22	5.13	40.44	25.94	44.06	29.56	12.00
1-1/4x18	6500	23.00	1.25	1.50	7.22	5.13	52.44	31.94	56.06	35.56	18.00
1-1/4x24	6500	27.00	1.25	1.50	7.22	5.13	64.44	37.94	68.06	41.56	24.00
1-1/2x12	7500	27.50	1.50	1.88	8.34	5.75	43.94	28.94	47.44	32.44	12.00
1-1/2x18	7500	31.00	1.50	1.88	8.34	5.75	55.94	34.94	59.44	38.44	18.00
1-1/2x24	7500	37.50	1.50	1.88	8.34	5.75	67.94	40.94	71.44	44.44	24.00

PROOF LOAD IS 2.5 TIMES WORKING LOAD LIMIT. ULTIMATE LOAD IS 5 TIMES THE WORKING LOAD LIMIT.





P  
17

## HOOK & EYE TURNBUCKLES HG-225

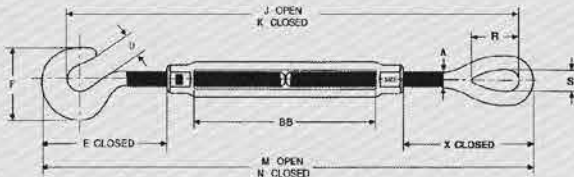
产品型号 XS-XK-17

**翔盛五金**  
T/0532-87527369 87525178  
F/0532-87527026  
WWW.QDXIANGSHENG.COM

中文名字/  
美式锻造花兰

English Name/  
HOOK & EYE TURNBUCKLES HG-225

剖面图/ Profile



产品数据图/ Product data graph

THREAD DIA&TAKE UP(IN.)	WORKING LOAD LIMIT(LBS.)	WEIGHT EACH (LBS.)	DIMENSIONS(IN.)									
			A	D	E CLOSED	F	J OPEN	K CLOSED	M OPEN	S	N CLOSED	BB
1/4x4	400	0.29	0.25	0.45	1.59	1.27	11.46	7.46	12.09	0.34	1.75	4.00
5/16x4-1/2	700	0.49	0.31	0.50	1.94	1.50	13.19	8.69	13.47	0.44	2.09	4.50
3/8x6	1000	0.78	0.38	0.56	2.30	1.77	16.98	10.98	17.94	0.53	2.52	6.00
1/2x6	1500	1.61	0.50	0.66	2.94	2.28	19.45	12.45	20.47	0.72	3.23	6.00
1/2x9	1500	1.85	0.50	0.66	2.94	2.28	25.45	15.45	26.67	0.72	3.23	9.00
1/2x12	1500	2.26	0.50	0.66	2.94	2.28	31.45	18.45	32.67	0.72	3.23	12.00
5/8x6	2250	2.70	0.63	0.90	3.69	2.81	21.96	13.96	22.72	0.88	3.90	6.00
5/8x9	2250	3.13	0.63	0.90	3.69	2.81	27.96	16.96	28.72	0.88	3.90	9.00
5/8x12	2250	3.78	0.63	0.90	3.69	2.81	33.21	19.96	34.72	0.88	3.90	12.00
3/4x6	3000	3.89	0.75	0.98	4.52	3.33	23.13	15.63	24.95	1.00	4.69	6.00
3/4x9	3000	4.61	0.75	0.98	4.52	3.33	29.13	18.63	30.95	1.00	4.69	9.00
3/4x12	3000	5.83	0.75	0.98	4.52	3.33	35.13	21.63	36.95	1.00	4.69	12.00
3/4x18	3000	6.33	0.75	0.98	4.52	3.33	47.13	27.63	48.95	1.00	4.69	18.00
7/8x12	4000	8.10	0.88	1.13	5.19	3.78	36.53	22.78	38.66	1.25	5.10	12.00
7/8x18	4000	9.95	0.88	1.13	5.19	3.78	48.53	28.78	50.66	1.25	5.10	18.00
1x6	5000	9.33	1.00	1.25	5.84	4.25	26.8	18.80	29.20	1.44	6.36	6.00
1x12	5000	11.93	1.00	1.25	5.84	4.25	38.8	24.80	41.20	1.44	6.36	12.00
1x18	5000	14.00	1.00	1.25	5.84	4.25	50.8	30.80	53.20	1.44	6.36	18.00
1x24	5000	17.25	1.00	1.25	5.84	4.25	62.8	36.80	65.20	1.44	6.36	24.00
1-1/4x12	6500	19.00	1.25	1.50	7.22	5.13	41.63	27.13	44.56	1.81	7.72	12.00
1-1/4x18	6500	23.00	1.25	1.50	7.22	5.13	53.63	33.13	56.56	1.81	7.72	18.00
1-1/4x24	6500	24.00	1.25	1.50	7.22	5.13	65.63	39.13	68.56	1.81	7.72	24.00
1-1/2x12	7500	27.50	1.50	1.88	8.34	5.75	44.72	29.72	47.72	2.12	8.62	12.00
1-1/2x18	7500	31.00	1.50	1.88	8.34	5.75	56.72	35.72	59.72	2.12	8.62	18.00
1-1/2x24	7500	37.50	1.50	1.88	8.34	5.75	68.72	41.72	71.72	2.12	8.62	24.00

PROOF LOAD IS 2.5 TIMES WORKING LOAD LIMIT. ULTIMATE LOAD IS 5 TIMES THE WORKING LOAD LIMIT.





EYE & EYE  
TURNBUCKLES  
HG-226

产品编号 XS-XK-18

翔盛五金

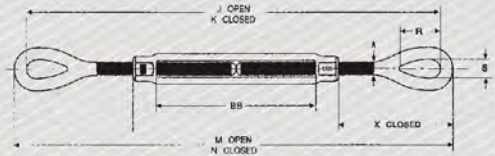
T/0532-87527369 87525178  
T/0532-87527026  
WWW.QDXIANGSHENG.COM



中文名字/  
美式锻造花兰

English Name/  
EYE & EYE TURNBUCKLES HG-226

剖面图/ Profile



产品数据图/ Product data graph

THREAD DIA&TAKE UP(IN.)	WORKING LOAD LIMIT(LBS.)	WEIGHT EACH (LBS.)	DIMENSIONS(IN.)								
			A	J OPEN	K CLOSED	M OPEN	N CLOSED	R	S	X CLOSED	BB
1/4x4	500	0.26	0.25	11.80	7.80	12.25	8.25	0.78	0.34	1.75	4.00
5/16x4-1/2	800	0.45	0.31	13.56	9.06	14.12	9.62	0.94	0.44	2.09	4.50
3/8x6	1200	0.76	0.38	17.47	11.47	18.16	12.16	1.12	0.53	2.52	6.00
1/2x6	2200	1.54	0.50	20.08	13.08	20.96	13.96	1.42	0.72	3.23	6.00
1/2x9	2200	1.13	0.50	26.08	16.08	26.96	16.96	1.42	0.72	3.23	9.00
1/2x12	2200	2.14	0.50	32.08	19.08	32.96	19.96	1.42	0.72	3.23	12.00
5/8x6	3500	3.28	0.63	21.93	14.68	22.93	15.68	1.80	0.88	3.90	6.00
5/8x9	3500	2.83	0.63	27.93	17.68	28.93	18.68	1.80	0.88	3.90	9.00
5/8x12	3500	3.42	0.63	33.93	20.68	34.93	21.68	1.80	0.88	3.90	12.00
3/4x6	5200	3.79	0.75	23.88	16.38	25.12	17.62	2.09	1.00	4.69	6.00
3/4x9	5200	4.61	0.75	29.88	19.38	31.12	20.62	2.09	1.00	4.69	9.00
3/4x12	5200	5.48	0.75	35.88	22.38	37.12	23.62	2.09	1.00	4.69	12.00
3/4x18	5200	7.19	0.75	47.88	28.38	49.12	29.62	2.09	1.00	4.69	18.00
7/8x12	7200	7.22	0.88	37.07	23.32	38.57	24.82	2.38	1.25	5.10	12.00
7/8x18	7200	9.95	0.88	49.07	29.32	50.57	30.82	2.38	1.25	5.10	18.00
1x6	10000	9.04	1.00	27.97	19.97	29.72	21.72	3.00	1.44	6.36	6.00
1x12	10000	11.50	1.00	39.97	25.97	41.97	27.72	3.00	1.44	6.36	12.00
1x18	10000	14.00	1.00	51.97	31.97	53.72	33.72	3.00	1.44	6.36	18.00
1x24	10000	17.25	1.00	63.97	37.97	65.72	39.72	3.00	1.44	6.36	24.00
1-1/4x12	15200	19.00	1.25	42.81	28.31	45.06	30.56	3.56	1.81	7.72	12.00
1-1/4x18	15200	23.00	1.25	54.81	34.31	57.06	36.56	3.56	1.81	7.72	18.00
1-1/4x24	15200	27.00	1.25	66.81	40.31	69.06	42.56	4.06	1.81	7.72	24.00
1-1/2x12	21400	27.50	1.50	45.50	30.50	48.00	33.00	4.06	2.12	8.62	12.00
1-1/2x18	21400	31.00	1.50	57.5	36.50	60.00	39.00	4.06	2.12	8.62	18.00
1-1/2x24	21400	37.50	1.50	69.50	42.50	72.00	45.00	4.62	2.12	8.62	24.00
1-3/4x18	28000	52.50	1.75	57.38	39.38	60.38	42.38	4.62	2.38	10.00	18.00
1-3/4x24	28000	58.00	1.75	69.38	45.38	72.38	48.38	4.62	2.38	10.00	24.00
2X24	37000	85.25	2.00	75.69	51.69	79.19	55.19	5.75	2.69	13.09	24.00
2-1/2X24	60000	144.25	2.50	78.62	54.62	82.62	58.62	6.50	3.12	13.78	24.00
2-3/4X24	75000	194.00	2.75	81.00	57.00	85.50	61.50	7.00	3.25	15.22	24.00

PROOF LOAD IS 2.5 TIMES WORKING LOAD LIMIT. ULTIMATE LOAD IS 5 TIMES THE WORKING LOAD LIMIT.





## JAW & EYE TURNBUCKLES HG-227

产品编号/XS-XK-19

**翔盛五金**

T/0532-87527369 87525178

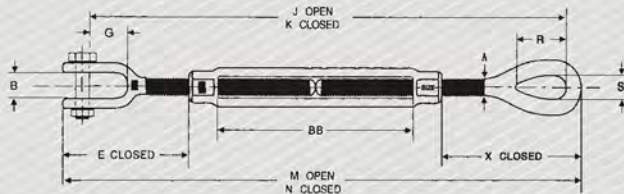
F/0532-87527026

WWW.QDXIANGSHENG.COM

中文名字/  
美式锻造花兰

English Name/  
JAW & EYE TURNBUCKLES HG-227

剖面图/ Profile



产品数据图/ Product data graph

THREAD DIA&TAKE UP(IN.)	WORKING LOAD LIMIT(LBS.)	WEIGHT EACH (LBS.)	DIMENSIONS(IN.)											
			A	B	E CLOSED	G	J OPEN	K CLOSED	M OPEN	N CLOSED	R	S	X CLOSED	BB
1/4x4	500	0.30	0.25	0.45	1.58	0.62	11.35	7.35	12.07	8.07	0.78	0.34	1.75	4.00
5/16x4-1/2	800	0.50	0.31	0.50	1.98	0.87	13.71	8.71	14.01	9.51	0.94	0.44	2.09	4.50
3/8x6	1200	0.80	0.38	0.54	2.12	0.87	16.81	10.81	17.77	11.77	1.12	0.53	2.52	6.00
1/2x6	2200	1.51	0.50	0.55	2.75	1.06	19.29	12.29	20.48	13.48	1.42	0.72	3.23	6.00
1/2x9	2200	1.71	0.50	0.55	2.75	1.06	25.29	15.29	26.48	16.48	1.42	0.72	3.23	9.00
1/2x12	2200	2.08	0.50	0.55	2.75	1.06	31.29	18.29	32.48	19.48	1.42	0.72	3.23	12.00
5/8x6	3500	2.35	0.63	0.82	3.50	1.31	20.99	13.74	22.53	15.28	1.80	0.88	3.90	6.00
5/8x9	3500	3.17	0.63	0.82	3.50	1.31	26.99	16.74	28.53	18.28	1.80	0.88	3.90	9.00
5/8x12	3500	3.61	0.63	0.82	3.50	1.31	32.99	19.74	34.53	21.28	1.80	0.88	3.90	12.00
3/4x6	5200	4.00	0.75	1.03	4.18	1.50	22.69	15.19	24.61	17.11	2.09	1.00	4.69	6.00
3/4x9	5200	4.75	0.75	1.03	4.18	1.50	28.69	18.19	30.61	20.11	2.09	1.00	4.69	9.00
3/4x12	5200	5.93	0.75	1.03	4.18	1.50	34.69	21.19	36.61	23.11	2.09	1.00	4.69	12.00
3/4x18	5200	7.00	0.75	1.03	4.18	1.50	46.69	27.19	48.61	29.11	2.09	1.00	4.69	18.00
7/8x12	7200	8.36	0.88	1.23	4.85	1.75	36.09	22.34	38.32	24.57	2.38	1.25	5.10	12.00
7/8x18	7200	9.75	0.88	1.23	4.85	1.75	48.09	28.34	50.32	30.57	2.38	1.25	5.10	18.00
1x6	10000	8.92	1.00	1.31	5.53	2.06	26.34	18.34	28.89	20.89	3.00	1.44	6.36	6.00
1x12	10000	11.20	1.00	1.31	5.53	2.06	38.34	24.34	40.89	26.89	3.00	1.44	6.36	12.00
1x18	10000	13.30	1.00	1.31	5.53	2.06	50.34	30.34	52.89	32.89	3.00	1.44	6.36	18.00
1x24	10000	17.00	1.00	1.31	5.53	2.06	62.34	36.34	64.89	38.89	3.00	1.44	6.36	24.00
1-1/4x12	15200	19.42	1.25	1.86	7.21	2.81	41.32	26.82	44.55	30.05	3.56	1.81	7.72	12.00
1-1/4x18	15200	24.18	1.25	1.86	7.21	2.81	53.32	32.82	46.05	36.05	3.56	1.81	7.72	18.00
1-1/4x24	15200	28.50	1.25	1.86	7.21	2.81	65.32	38.82	68.55	42.05	4.06	1.81	7.72	24.00
1-1/2x12	21400	28.99	1.50	2.25	7.88	2.81	73.50	28.50	47.25	32.25	4.06	2.12	8.62	12.00
1-1/2x18	21400	35.00	1.50	2.25	7.88	2.81	55.50	34.50	59.25	38.25	4.06	2.12	8.62	18.00
1-1/2x24	21400	39.18	1.50	2.25	7.88	2.81	67.50	40.50	71.25	44.25	4.62	2.12	8.62	24.00
1-3/4x18	28000	53.75	1.75	2.60	9.40	3.38	55.38	37.38	59.78	41.78	4.62	2.38	10.00	18.00
1-3/4x24	28000	60.68	1.75	2.60	9.40	3.38	67.38	43.38	71.78	47.78	4.62	2.38	10.00	24.00
2X24	37000	89.00	2.00	2.62	11.86	3.69	72.62	48.62	77.95	53.95	5.75	2.69	13.09	24.00
2-1/2X24	60000	150.00	2.50	3.06	13.56	4.44	75.80	51.80	82.40	58.40	6.50	3.12	13.78	24.00
2-3/4X24	75000	183.00	2.75	3.68	15.22	4.19	77.88	53.88	85.50	61.50	7.00	3.25	15.22	24.00

PROOF LOAD IS 2.5 TIMES WORKING LOAD LIMIT. ULTIMATE LOAD IS 5 TIMES THE WORKING LOAD LIMIT.





**JAW & JAW  
TURNBUCKLES  
HG-228**

产品编号 XS-XK-20

**翔盛五金**

T/0532-87527369 87525178

T/0532-87527026

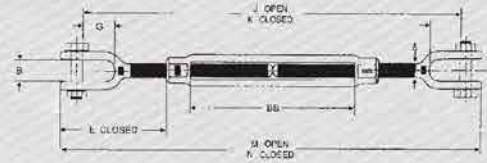
WWW.QDXIANGSHENG.COM



中文名字/  
美式锻造花兰

English Name/  
**JAW & JAW TURNBUCKLES HG-228**

剖面图/ Profile

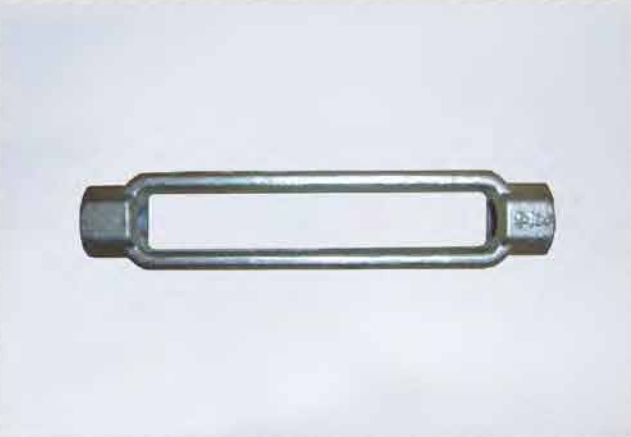


产品数据图/ Product data graph

THREAD DIA&TAKE UP(IN.)	WORKING LOAD LIMIT(LBS.)	WEIGHT EACH (LBS.)	DIMENSIONS(IN.)									
			A	B	E CLOSED	G	J OPEN	K CLOSED	M OPEN	N CLOSED	BB	
1/4x4	500	0.36	0.25	0.45	1.58	0.62	10.90	6.90	11.90	7.90	4.00	
5/16x4-1/2	800	0.52	0.31	0.50	1.98	0.87	12.36	8.36	13.90	9.40	4.50	
3/8x6	1200	0.81	0.38	0.54	2.12	0.87	16.14	10.14	17.38	11.38	6.00	
1/2x6	2200	1.56	0.50	0.55	2.75	1.06	18.50	11.50	20.00	13.00	6.00	
1/2x9	2200	1.74	0.50	0.55	2.75	1.06	24.50	14.50	26.00	16.00	9.00	
1/2x12	2200	2.40	0.50	0.55	2.75	1.06	30.50	17.50	32.00	19.00	12.00	
5/8x6	3500	2.72	0.63	0.82	3.50	1.31	20.05	12.80	22.13	14.88	6.00	
5/8x9	3500	3.43	0.63	0.82	3.50	1.31	26.05	15.80	28.13	17.88	9.00	
5/8x12	3500	3.91	0.63	0.82	3.50	1.31	32.05	18.80	34.13	20.88	12.00	
3/4x6	5200	4.11	0.75	1.03	4.18	1.50	21.50	14.00	24.10	16.60	6.00	
3/4x9	5200	5.46	0.75	1.03	4.18	1.50	27.50	17.00	30.10	19.60	9.00	
3/4x12	5200	6.43	0.75	1.03	4.18	1.50	33.50	20.00	36.10	22.60	12.00	
3/4x18	5200	8.07	0.75	1.03	4.18	1.50	45.50	26.00	48.10	28.60	18.00	
7/8x12	7200	8.17	0.88	1.23	4.85	1.75	35.11	21.36	38.07	24.32	12.00	
7/8x18	7200	10.78	0.88	1.23	4.85	1.75	47.11	27.36	50.07	30.32	18.00	
1x6	10000	10.18	1.00	1.31	5.53	2.06	24.72	16.72	28.06	20.06	6.00	
1x12	10000	12.52	1.00	1.31	5.53	2.06	36.72	22.72	40.06	26.06	12.00	
1x18	10000	15.14	1.00	1.31	5.53	2.06	48.72	28.72	52.06	32.06	18.00	
1x24	10000	18.08	1.00	1.31	5.53	2.06	60.72	34.72	64.06	38.06	24.00	
1-1/4x12	15200	20.59	1.25	1.86	7.21	2.81	39.84	25.34	44.04	29.54	12.00	
1-1/4x18	15200	24.68	1.25	1.86	7.21	2.81	51.84	31.34	56.04	35.54	18.00	
1-1/4x24	15200	28.20	1.25	1.86	7.21	2.81	63.84	37.34	68.04	41.54	24.00	
1-1/2x12	21400	30.69	1.50	2.25	7.88	2.81	41.50	26.50	46.50	31.50	12.00	
1-1/2x18	21400	36.75	1.50	2.25	7.88	2.81	53.50	32.50	58.50	37.50	18.00	
1-1/2x24	21400	40.67	1.50	2.25	7.88	2.81	65.50	38.50	70.50	43.50	24.00	
1-3/4x18	28000	54.00	1.75	2.60	9.40	3.38	53.38	35.38	59.18	41.18	18.00	
1-3/4x24	28000	63.36	1.75	2.60	9.40	3.38	65.38	41.38	71.18	47.18	24.00	
2X24	37000	94.25	2.00	2.62	11.86	3.69	69.54	45.54	76.72	52.72	24.00	
2-1/2X24	60000	165.00	2.50	3.06	13.56	4.44	72.98	48.98	82.18	58.18	24.00	
2-3/4X24	75000	198.00	2.75	3.68	15.22	4.19	74.75	50.75	85.50	61.50	24.00	

PROOF LOAD IS 2.5 TIMES WORKING LOAD LIMIT. ULTIMATE LOAD IS 5 TIMES THE WORKING LOAD LIMIT.





**TURNBUCKLES  
-BODY ONLY**

产品编号XS-XK-21

**翔盛五金**

T/0532-87527369 87525178

F/0532-87527026

WWW.QDXIANGSHENG.COM

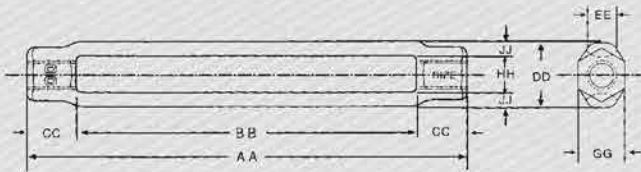
中文名字/

**美式锻造花兰**

English Name/

**TURNBUCKLES-BODY ONLY**

剖面图/ Profile



产品数据图/ Product data graph

THREAD DIA&TAKE UP(IN.)	WORKING LOAD LIMIT(LBS.)	WEIGHT EACH (LBS.)	DIMENSIONS(IN.)							
			AA	BB	CC	DD	EE	GG	HH	JJ
1/4x4	500	0.15	4.75	4.00	0.38	0.72	0.34	0.50	0.38	0.17
5/16x4-1/2	800	0.19	5.44	4.50	0.47	0.81	0.38	0.56	0.44	0.19
3/8x6	1200	0.29	7.12	6.00	0.56	0.88	0.38	0.62	0.50	0.19
1/2x6	2200	0.60	7.50	6.00	0.75	1.12	0.50	0.81	0.62	0.25
1/2x9	2200	0.68	10.50	9.00	0.75	1.12	0.50	0.81	0.62	0.25
1/2x12	2200	1.00	13.50	12.00	0.75	1.12	0.50	0.81	0.62	0.25
5/8x6	3500	0.90	7.88	6.00	0.94	1.38	0.62	1.00	0.75	0.31
5/8x9	3500	1.18	10.88	9.00	0.94	1.38	0.62	1.00	0.75	0.31
5/8x12	3500	1.43	13.88	12.00	0.94	1.38	0.62	1.00	0.75	0.31
3/4x6	5200	1.30	8.25	6.00	1.12	1.69	0.75	1.12	0.94	0.38
3/4x9	5200	1.75	11.25	9.00	1.12	1.69	0.75	1.12	0.94	0.38
3/4x12	5200	2.08	14.25	12.00	1.12	1.69	0.75	1.12	0.94	0.38
3/4x18	5200	2.50	20.25	18.00	1.12	1.69	0.75	1.12	0.94	0.38
7/8x12	7200	2.70	14.62	12.00	1.31	1.94	0.88	1.31	1.06	0.44
7/8x18	7200	3.80	20.62	18.00	1.31	1.94	0.88	1.31	1.06	0.44
1x6	10000	2.48	9.00	6.00	1.50	2.25	1.00	1.50	1.25	0.50
1x12	10000	3.93	15.00	12.00	1.50	2.25	1.00	1.50	1.25	0.50
1x18	10000	5.28	21.00	18.00	1.50	2.25	1.00	1.50	1.25	0.50
1x24	10000	7.38	27.00	24.00	1.50	2.25	1.00	1.50	1.25	0.50
1-1/4x12	15200	5.25	15.12	12.00	1.56	2.62	1.25	1.88	1.50	0.56
1-1/4x18	15200	7.75	21.12	18.00	1.56	2.62	1.25	1.88	1.50	0.56
1-1/4x24	15200	10.17	27.12	24.00	1.56	2.62	1.25	1.88	1.50	0.56
1-1/2x12	21400	8.75	15.75	12.00	1.88	3.00	1.50	2.25	1.75	0.62
1-1/2x18	21400	11.00	21.75	18.00	1.88	3.00	1.50	2.25	1.75	0.62
1-1/2x24	21400	13.69	27.75	24.00	1.88	3.00	1.50	2.25	1.75	0.62
1-3/4x18	28000	16.38	22.38	18.00	2.19	3.62	1.75	2.62	2.12	0.75
1-3/4x24	28000	21.25	28.38	24.00	2.19	3.62	1.75	2.62	2.12	0.75
2X24	37000	27.60	29.00	24.00	2.50	4.12	2.00	3.00	2.38	0.88
2-1/2X24	60000	54.00	31.06	24.00	3.53	5.62	2.75	3.88	3.12	1.25
2-3/4X24	75000	54.00	31.06	24.00	3.53	5.62	2.75	3.88	3.12	1.25

PROOF LOAD IS 2.5 TIMES WORKING LOAD LIMIT.ULTIMATE LOAD IS 5 TIMES THE WORKING LOAD LIMIT.





RIGGING  
SCREWS

产品编号 XS-XK-22

翔盛五金

T/0532-87527369 87525178

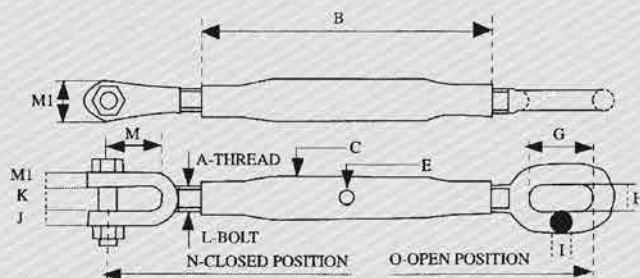
T/0532-87527026

WWW.QDXIANGSHENG.COM



中文名字/  
封闭花篮  
English Name/  
RIGGING SCREWS

剖面图/ Profile



产品数据图/ Product data graph

ΦA THREAD	B mm	ΦC mm	ΦE mm	G mm	H mm	ΦI mm	J mm	ΦK mm	ΦL mm	M mm	M1 mm	N mm	O mm	Suitable For WLL	WT Kg
M6	102	17	6	14	8	6	6	9	4	21	14	176	254	100kgs	0.1
M8	127	17	6	20	9	8	6	9	6	21	18	203	305	150kgs	0.2
M10	152	21	8	25	11	8	8	12	8	19	18	235	349	380kgs	0.4
M12	229	27	9	38	14	11	9	19	10	35	24	334	527	500kgs	1.0
M16	229	27	11	40	18	14	9	22	12	51	32	375	556	760kgs	1.4
M20	229	34	11	50	22	16	11	22	16	48	36	385	554	1.2T	2.0
M22	305	42	13	48	22	17	13	25	20	60	40	465	704	1.7T	3.4
M24	356	42	13	51	25	19	14	32	22	63	48	528	812	2.2T	4.4
M27	356	48	13	57	28	20	14	32	22	70	52	542	817	2.8T	5.5
M33	381	48	14	64	34	25	19	38	24	76	64	602	884	3.8T	8.0
M39	407	60	16	75	38	27	19	47	33	90	64	644	934	5.2T	12.0
1-3/4"	407	76	17	85	40	30	24	48	36	105	80	670	942	7.2T	17.0
2"	407	76	19	92	44	37	25	51	42	121	92	739	993	10 T	24.0





TURNBUCKLES  
PIPE BLDY TYPE  
DIN 1478

产品编号 XS-XK-23

翔盛五金

T/0532-87527369 87525178  
F/0532-87527026  
WWW.QDXIAN.GSHENG.COM

中文名字/

德式锻造花兰DIN1478

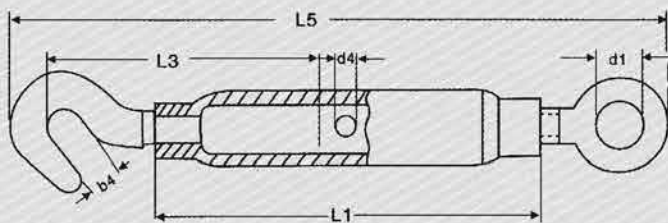
English Name/

TURNBUCKLES,PIPE BLDY TYPE DIN 1478

产品概要/ Product summary

WITH HOOK AND EYE

剖面图/ Profile



产品数据图/ Product data graph

THREAD	BODY LENGTH L1	ADJUSTABLE	d4	HOOK		EYE		Total Length Screwed in L5	Weight PER 100PCS (KG)
				L3	b1	L3	d1		
(mm)	(mm)	(mm)	(mm)	(mm)	(mm)	(mm)	(mm)	(mm)	(KG)
M6	110	90	6	85	8.5	80	9	172	11.6
M8	110	85	8	85	11	84	10	182	19
M10	125	95	8	112	13.5	105	14	213	31
M12	125	90	10	117	15.5	115	16	238	42
M16	170	120	10	138	19	165	22	320	89
M20	200	140	12	170	20.5	167	24	367	158
M24	255	180	12	205	26	205	27	447	292
M30	255	160	16	225	33	255	31	512	430
M36	295	180	16	255	44	276	43	568	605
M42	330	200	20	340	48	260	49	683	1160
M48	355	210	20	360	58	300	58	755	1600



P  
24



TURNBUCKLES  
DIN 1480

产品编号 XS-XK-24

翔盛五金

T/0532-87527369 87525178

T/0532-87527026

WWW.QDXIANGSHENG.COM



中文名字/

德式锻造花兰DIN1480

English Name/

TURNBUCKLES,DIN 1480

产品概要/ Product summary

EYE & EYE HOOK & EYE, HOOK & HOOK

剖面图/ Profile



产品数据图/ Product data graph

THREAD mm	L1 mm	L2 mm	L3 mm	B1 mm	L4 mm	D1 mm	L5 mm	WEIGHT(KG) PER 100 PCS.
M6	110	80	85	8.5	80	9	172	9.5
M8	110	75	85	11	84	10	182	16.5
M10	125	85	112	13.5	105	14	213	29
M12	125	80	117	15.5	115	16	238	43
M14	140	90	122	18.5	122	18	263	62
M16	170	110	138	19	165	22	320	92
M20	200	130	170	20.5	167	24	367	163
M22	220	145	185	26	167	27	398	220
M24	255	170	205	26	205	27	447	300
M30	255	160	225	33	255	31	512	460
M36	295	180	255	44	276	43	568	768
M42	330	200	340	48	260	49	683	1290
M48	355	195	360	58	300	58	755	2100





P  
25



**TURNBUCKLE  
BODY DIN1480**

产品编号 XS-XK-25

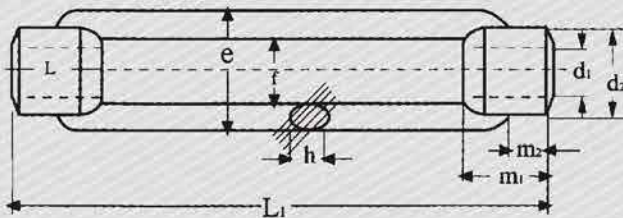
**翔盛五金**  
T/0532-87527369 87525178  
F/0532-87527026  
WWW.QDXIANSHENG.COM

中文名字/  
**DIN1480 花篮**

English Name/  
**TURNBUCKLE BODY DIN1480**

产品概要/ Product summary

剖面图/ Profile



产品数据图/ Product data graph

THREAD mm	L1 mm	ADJUSTABLE mm	D2 mm	E mm	F mm	H mm	M1 mm	M2 mm	WEIGHT(KG) PER 100 PCS.
M6	110	80	12	19	9	6	12	6	5.5
M8	110	75	15	23	11	8	15	8	9.5
M10	125	85	18	30	14	9	18	9	15.50
M12	125	80	21	34	16	11	21	11	20.5
M14	140	90	25	38	18	10	24	9	31
M16	170	110	27	42	20	14	27	14	42
M20	200	130	34	52	24	17	34	17	74
M22	220	145	36	57	26	16	37	15	95
M24	255	170	39	60	28	20	39	20	130
M30	255	160	45	74	34	23	45	23	180
M36	295	180	55	86	40	28	55	28	310
M42	330	200	63	104	50	32	63	32	556
M48	355	195	80	135	65	40	78	39	975
M56	355	195	80	135	65	40	78	39	900





DEE-DEE TURNBUCKLES(HAMBURG)

产品编号/XS-XK-26

**翔盛五金**

T/0532-87527369 87525178  
T/0532-87527026

WWW.QDXIANGSHENG.COM

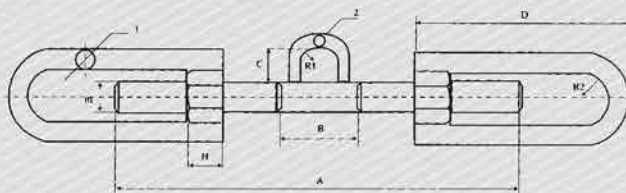


中文名字/  
汉堡花篮

English Name/  
DEE-DEE TURNBUCKLES (HAMBURG)

产品概要/ Product summary

剖面图/ Profile



产品数据图/ Product data graph

THREAD	A	B	C	D	H	1	2	R1	R2	BREAKING LOAD(T)	REMARK
M24	400	75	35	210	22	16	12	15	20	13	THE FIGURES IN BRACKETS ARE ADJUSTABLE
		75	35	210	36	18	12	15	20	(18)	
M24	500	75	35	260	22	16	12	15	20	13	
		75	35	260	36	18	12	15	20	(18)	
M27	400	75	35	210	33	20	12	17.5	21.5	20	
		75	35	210	42	20	12	17.5	21.5	(25)	
M27	500	75	35	260	33	20	12	17.5	21.5	20	
		75	35	260	42	20	12	17.5	21.5	(25)	
M30	400	75	35	210	-	-	12	17.5	22.5	-	
		75	35	210	45	22	12	17.5	25.5	25	
M30	500	75	35	260	-	-	12	17.5	25.5	-	
		75	35	260	45	22	12	17.5	25.5	25	
M38	480	80	35	255	40	25	12	20	28	30	
		80	35	-	-	-	12	-	-	-	





## DECKLASHING TURNBUCKLES

产品编号/XS-XK-27

**翔盛五金**

T/0532-87527369 87525178  
F/0532-87527026  
WWW.QDXMANGSHENG.COM

中文名字/

**捆绑花篮**

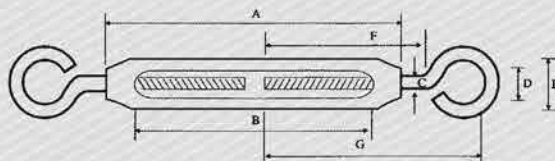
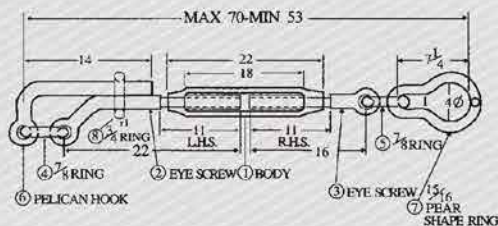
English Name/

## DECKLASHING TURNBUCKLES

剖面图/ Profile

产品概要/ Product summary

**WITH PELICAN AND PEAR SHAPE LINK, SELF COLORED**  
**1-1/4"x18"**  
**WEIGHT:37.0 LBS(16.8KGS)**  
**MIN.LOAD TO VISIBLE DISTORTION 18250LBS.**  
**MINIMUM BREAKING LOAD 56000 LBS(25.5 TONS)**



韩式花兰

KOREAN TYPE TURNBUCKLES

SIZE(IN)	A (mm)	B (mm)	C (mm)	D (mm)	E (mm)	F (mm)	G (mm)	WEIGHT PER 100PCS (KG)
3/16	57.4	41.2	41.5	18.4	15	36	54.6	30
5/16	90	70	8	11	22	65	95	145
3/8	160	130	9	17	30	85	130	345
1/2	190	155	10	20	30	95	150	560
1/2(Long)	255	215	10	30	35	140	190	790
5/8	250	200	15	25	45	130	190	1120
5/8(Long)	350	300	15	30	45	180	240	1540
3/4	250	200	20	35	45	140	210	1670
3/4(Long)	300	245	20	40	55	170	240	2050





TURNBUCKLES  
COMMERCIAL TYPE  
(MALLEABLE)

产品编号/XS-XK-28

**翔盛五金**

T/0532-87527369 87525178

T/0532-87527026

WWW.QDXIANGSHENG.COM

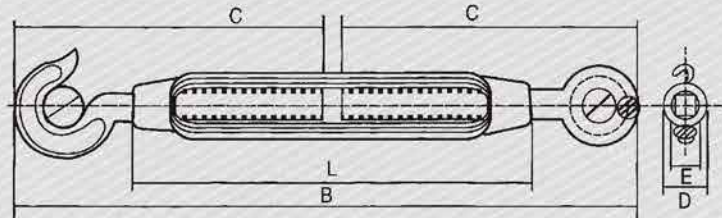


中文名字/  
普通玛钢花兰

English Name/  
TURNBUCKLES COMMERCIAL TYPE (MALLEABLE)

产品概要/ Product summary

剖面图/ Profile



产品数据图/ Product data graph

SWL(kg)	SIZE	B	C	D	E	L	WEIGHT EACH kg
100	6x100mm	145	215	12	10	100	0.16
200	8x125mm	185	280	14	12	125	0.24
300	10x150mm	210	325	16	14	150	0.39
500	12x200mm	275	430	19	18	200	0.64
1000	16x250mm	345	540	23	24	250	1.44
1500	20x300mm	435	670	28	26	300	2.45
2200	22x320mm	480	740	34	32	325	3.6
3000	24x350mm	555	830	36	36	350	5.00






**JIS FORGED STEEL  
FRAME TYPE  
TURNBUCKLES**

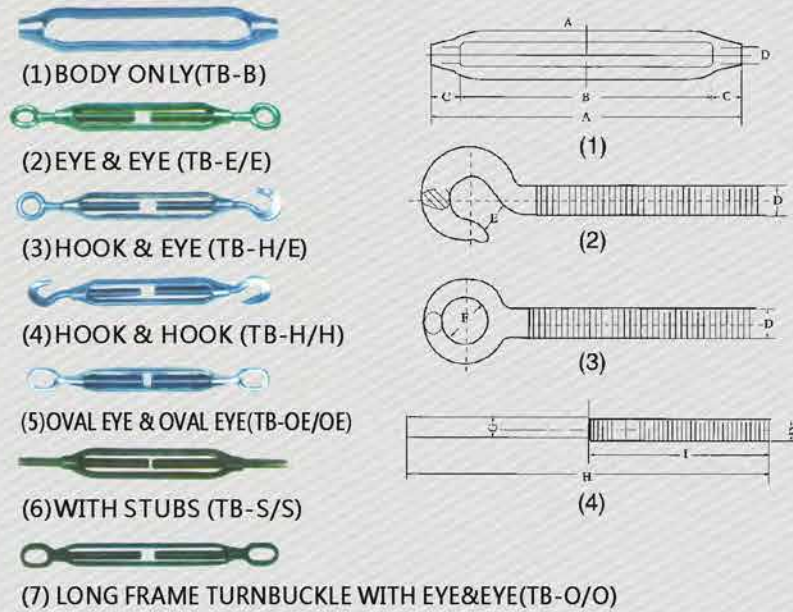
产品编号 XS-XK-29

**翔盛五金**  
T/0532-87527369 87525178  
F/0532-87527026  
WWW.QDXIANGSHENG.COM

中文名字/  
**日式开体花兰**

English Name/  
**JIS FORGED STEEL FRAME TYPE TURNBUCKLES**

剖面图/ Profile



(7) SIZES AND WEIGHTS (APPROX.)

DIA.X OUTSIDE LENGTH OF FRAME (MM)	INSIDE DIA.OF EYE(MM)	WEIGHT PER PC(KG)
19X510	37	2.90
22X520	31X50	3.80
25X520	33X70	5.20
25X900	33X70	8.00
32X575	36X70	9.80
32X900	36X70	-

产品数据图/ Product data graph

(1) (2) (3) (4) (6) SIZES AND WEIGHTS (APPROX.)

NOMINAL SIZE		(1) BODY ONLY						(2) EYE & EYE			(3) HOOK & EYE		(4) HOOK & HOOK			(6) WITH STUBS			
		A	B	C	T.L	W/PC	F	T.L	W/PC	T.L	W/PC	E	T.L	W/PC	H	I(A2)	G	W/PC	
mm	in	mm	in	mm	mm	Ton	kg	mm	Ton	kg	Ton	kg	mm	Ton	kg	mm	mm	mm	mm
6	1/4	100	4	78	11	1	0.08	10	0.1	0.116	0.04	0.114	9	0.04	0.112	80	50	5.3	0.112
8	5/16	125	5	100	12.5	1.2	0.15	12	0.2	0.22	0.08	0.218	9	0.08	0.215	100	63	6.9	0.22
9	3/8	150	6	120	12.5	1.5	0.17	16	0.5	0.30	0.15	0.293	11	0.15	0.29	130	75	8.3	0.272
12	1/2	200	8	164	18	2	0.29	20	2	0.58	0.35	0.585	16	0.35	0.57	150	100	11.2	0.51
16	5/8	250	10	202	21.5	3	0.52	22	3	1.07	0.7	1.05	19	0.7	1.03	180	125	14.2	0.95
19	3/4	300	12	250	25	4	0.85	28	4	1.77	1.0	1.78	20	1.0	1.77	220	150	17.2	1.62
22	7/8	325	13	269	28	5	1.17	33	5	2.55	1.5	2.58	21	1.5	2.60	250	165	20.3	2.34
25	1	350	14	285	32.5	6	1.69	35	6	3.79	2.0	3.77	26	2.0	3.72	270	175	23.3	3.27
32	1-1/4	400	16	310	45	8	3.51	36x70	10	7.60	3.0	7.52	34	3.0	7.44	300	200	29	6.52
38	1-1/2	450	18	350	55	10	5.08	40x80	15	13.50	4.0	12.8	35	4.0	22	330	225	38	13
44	1-3/4	500	20	386	57	-	9.00	-	-	-	-	-	-	-	22	-	250	44	-
50	2	550	22	420	65	-	11.50	-	-	-	-	-	-	-	29	-	275	50	-



P  
30



SPRING SNAP HOOK

产品编号XS-XK-30

翔盛五金

T/0532-87527369 87525178

T/0532-87527026

WWW.QDXIANGSHENG.COM



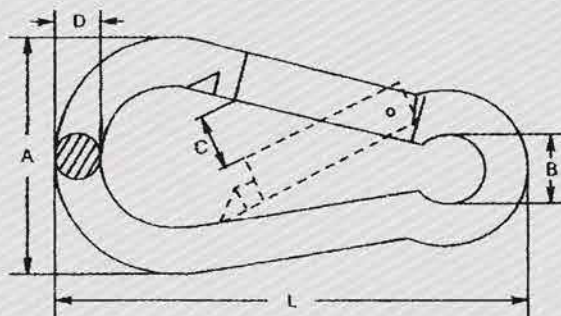
中文名字/

弹簧钩

English Name/

SPRING SNAP HOOK

剖面图/ Profile



产品数据图/ Product data graph



弹簧钩

SPRING SNAP HOOK

SIZE (MM)	DIMENSIONS(MM.)					SWL (LBS)	N.W(KG /100pcs )
	A	B	C	D	L		
4X40	20	6	6	4	40	100	0.8
5X50	25	8	7	5	50	160	1.6
6X60	30	9	7	6	60	260	2.8
7X70	35	10	10	7	70	335	4.5
8X80	40	11	11	8	80	400	6.3
9X90	45	13	11	9	90	500	9.4
10X100	50	16	12	10	100	650	12.5
11X120	57	18	19	11	120	700	19.2
12x140	67	20	20	12	140	800	25.8
13X160	74	22	29	13	160	1300	35.1
14X180	86	22	42	14	180	1600	45.5
15X200	90	26	42	15	200	1800	61.8

弹簧钩带圈

SPRING SNAP HOOK WITH EYELET

SIZE (MM)	DIMENSIONS(MM.)					SWL (LBS)	N.W(KG /100pcs)
	A	B	C	D	L		
4X40	20	5	6	4	40	100	0.85
5X50	25	5	7	5	50	160	1.8
6X60	30	5	7	6	60	260	3
7X70	35	7	10	7	70	335	5
8X80	40	10	11	8	80	400	7
9X90	45	10	11	9	90	500	9.8
10X100	50	13	12	10	100	650	14.2
11X120	57	13	19	11	120	700	21
12x140	67	15	20	12	140	800	27.5
13X160	74	17	29	13	160	1300	35.8

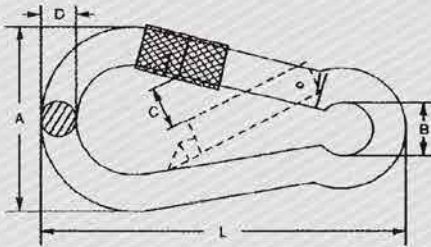




中文名字/  
**弹簧钩带螺母**

English Name/  
**SPRING SNAP HOOK WITH SCREW**

剖面图/ Profile



产品数据图/ Product data graph

**弹簧钩带螺母**  
**SPRING SNAP HOOK WITH SCREW**

SIZE (MM)	DIMENSIONS(MM.)					SWL (LBS)	N.W(KG /100pcs )
	A	B	C	D	L		
5X50	25	8	6	5	50	160	2
6X60	30	9	7	6	60	260	3
7X70	35	10	7.5	7	70	335	5
8X80	40	11	8.5	8	80	400	7.5
9X90	45	13	9	9	90	500	9.8
10X100	50	16	10	10	100	650	16
11X120	57	18	16	11	120	700	21
12x140	67	20	18	12	140	800	27
13X160	74	22	25	13	160	1300	36
14X180	86	22	39	14	180	1600	51

P  
31

**SPRING SNAP  
 HOOK WITH  
 SCREW**

产品编号:XS-XK-31

**翔盛五金**  
 T/0532-87527369 87525178  
 F/0532-87527026  
 WWW.QDXIANGSHENG.COM



**快速连接环**  
**QUICK LINK**

SIZE (MM)	DIMENSIONS(MM.)							N.W(KG /100pcs )
	A	B	C	D	L	L1	E	
3.5	17	10	5	3.5	36	29	11	0.8
4	19.5	11.5	5.5	4	39.5	31.5	12.5	1.2
5	23	13	6.5	5	48.5	35.5	16	2.1
6	26.5	14.5	7.5	6	57	45	19	3.5
7	30	16	8.5	7	66	52	21.5	5.45
8	33.5	17.5	10.5	8	74	58	24	7.5
9	37	19	11	9	80	62	26	10.5
10	40.5	20.5	12	10	89	69	29	13.5
12	47.5	23.5	15	12	105	80.5	33	22.8
14	54.5	26.5	17	14	121	93	38.5	35
16	61.5	29.5	19	16	140	108	45	50



P  
32



U.S.EYE HOOKS  
WITH LATCHES  
320

产品编号 XS-XK-32

翔盛五金

T/0532-87527369 87525178

T/0532-87527026

WWW.QDXIANGSHENG.COM



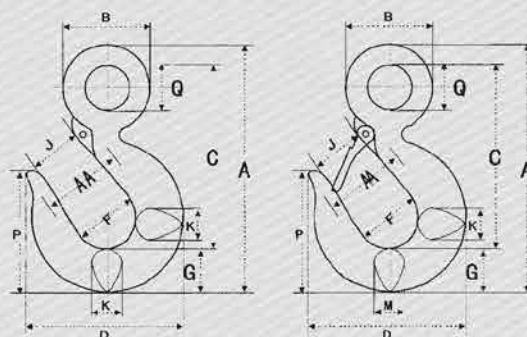
中文名字/

美式货钩320(带舌片)

English Name/

U.S.EYE HOOKS WITH LATCHES 320

剖面图/ Profile



产品数据图/ Product data graph

WORKING LOAD (T)		DIMENSIONS(MM)													WEIGH T EACH (KG.)
CARBO N 320C	ALLOY 320A	A	B	C	D	F	G	H	J	K	M	P	Q	AA	
3/4	1	112.3	37.34	84.84	72.64	31.75	18.54	20.57	23.62	16	16	50.8	19.05	38.1	0.28
1	1-1/2	128.3	44.45	96.52	80.01	35.05	21.34	23.88	24.64	18.03	18.03	56.9	23.11	50.8	0.4
1-1/2	2	145.8	54.1	107.2	90.17	38.1	25.4	29.46	26.92	22.35	22.35	62.23	28.7	50.8	0.65
2	3	165.9	61.21	122.4	100.8	41.4	28.7	33.53	30.23	23.88	23.88	71.63	31.75	50.8	0.94
3	5	205	76.2	150.1	123.7	50.8	36.58	41.4	38.1	33.27	33.27	89.15	39.62	63.5	1.95
5	7	258.8	96.77	189.7	159.3	63.5	45.97	52.32	45.21	42.16	42.16	114.8	50.8	76.2	3.76
7-1/2	11	318	118.4	232.7	190.5	76.2	57.15	66.8	61.21	47.15	41.4	135.1	61.98	101.6	6.8
10	15	356.9	136.7	258.8	212.6	82.55	65.79	74.68	66.55	55.63	49.28	152.4	72.14	101.6	9.8
15	22	441.5	168.4	325.6	262.6	108	76.2	88.9	86.61	68.33	60.45	175.3	88.9	127	17.92
20	30	494.5	177.8	357.1	346	127	51.95	117.4	101.6	76.2	-	223	88.9	165.1	27.22
25	37	630.2	215.9	462	357.1	136.7	115.8	127	108	51.95	-	289.1	114.3	177.8	47.63
30	45	697	236.5	511.1	392.2	152.4	128.5	139.7	120.7	94.49	-	320.8	125.5	203.2	67.13
40	60	820.7	273.1	602.5	469.9	172.8	152.4	165.1	146.1	112.8	-	376.2	144.5	254	103.4

Eye Hooks(3/4T C-22T A),proof load is 2.5times working load limit. eye hooks(20T C-60T A),proof load is 2 times working load limit. All carbon hooks-average straightening load (ultimate load)is 5 times working load limit. alloy eye hooks 1 ton through 22 tons-average straightening load(ultimate load)is 5 times working load limit.alloy eye hooks 30 tons through 60 tons-average straightening load (ultimate load) is 4.5 times working load limit.





P  
33

U.S.SWIVEL  
HOOKS 322

产品型号 XS-XK-33

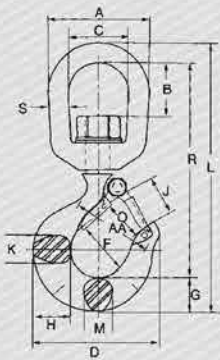
翔盛五金

T/0532-87527369 87525178  
F/0532-87527026  
WWW.QDXIANSHENG.COM

中文名字/  
美式旋转钩322

English Name/  
U.S.SWIVEL HOOKS 322

剖面图/ Profile



产品数据图/ Product data graph

WORKING LOAD (T)		DIMENSIONS(MM)															WEIGHT EACH (KG.)
CARBON	ALLOY	A	B	C	D	F	G	H	J	K	L	M	O	R	S	AA	
322C	322A																
3/4	1	50.8	20.8	31.8	72.6	31.8	19.1	20.6	23.6	16	144	16	22.6	115	9.6	38	0.34
1	1-1/2	63.5	31.8	38.1	80	35.1	21.3	23.9	24.6	18	170	18	23.1	136	12.7	51	0.57
1-1/2	2	76.2	38.1	44.5	91.2	38.1	25.4	29.5	26.9	22.4	197	22.4	25.4	155	16	51	1.02
2	3	76.2	38.1	44.5	101	41.1	28.7	33.3	30.2	23.9	210	23.9	27.7	165	16	51	1.17
3	4-1/2	88.9	41.7	50.8	123	50.8	36.6	41.4	38.1	33.3	246	33.3	34.5	191	19.1	63.5	2.15
5	7	114	58.2	63.5	159	63.5	46	52.3	45.2	42.2	317	42.2	40.9	245	25.4	76	4.67
7-1/2	11	127	30.2	69.9	192	76.2	57.2	66.8	61.2	47.8	369	41.4	52.8	283	28.7	102	7.37
10	15	143	63	79.2	212	82.5	65.8	74.7	66.5	55.6	409	49.3	57.7	305	31.8	102	10.7
-	22	180	95.5	104	264	108	76.2	88.9	86.6	68.3	539	60.5	76.7	421	41.4	127	22.6
-	30	180	95.5	104	346	-	93	-	102	72.5	590		82.6	459	38.1	165	32

Carbon swivel hooks 0.75T -15T:proof load is 2 times working load limit.designed with A to 1 design factory.

Alloy swivel hooks 1.5T-22T:proof load is 2.5 times working load limit.designed with A 4.5 to 1 design factor .

Alloy swivel hooks 30T:proof load is 2 times working load limit.designed with A 4 to 1 design factor .





CHAIN SWIVELS  
G-401

产品编号/XS-XK-34

翔盛五金

T/0532-87527369 87525178

T/0532-87527026

WWW.QDXIANGSHENG.COM



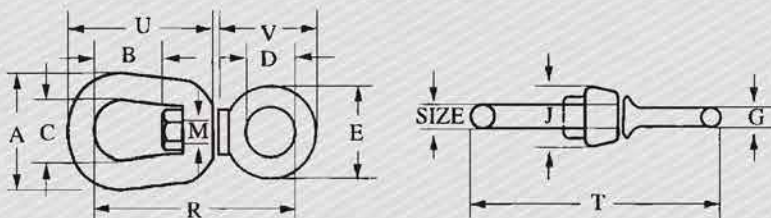
中文名字/

美式旋转环G-401

English Name/

CHAIN SWIVELS G-401

剖面图/ Profile



产品数据图/ Product data graph

SIZE (IN)	WORKING LOAD LIMIT (LBS)	DIMENSIONS(IN)												WEIGH T EACH (LBS)
		A	B	C	D	E	G	J	M	R	T	U	V	
1/4	850	1.25	0.69	0.75	0.62	1.12	0.25	0.69	0.31	2.25	2.75	1.69	1.25	0.13
5/16	1250	1.63	0.81	1	0.75	1.38	0.31	0.81	0.38	2.72	3.34	2.06	1.47	0.25
3/8	2500	2	0.94	1.25	1	1.75	0.38	1	0.5	3.44	4.19	2.5	1.88	0.54
1/2	3600	2.5	1.31	1.5	1.25	2.25	0.5	1.31	0.63	4.25	5.25	3.19	2.44	1.12
5/8	5200	3	1.56	1.75	1.5	2.75	0.62	1.5	0.75	5.13	6.31	3.88	2.94	1.75
3/4	7200	3.5	1.75	2	1.75	3.25	0.75	1.88	0.88	5.78	7.22	4.94	3.46	3.09

minimum breaking load is 5 times the w.l.l.





REGULAR  
SWIVELS G-402

产品编号 XS-XK-35

翔盛五金

T/0532-87527369 87525178

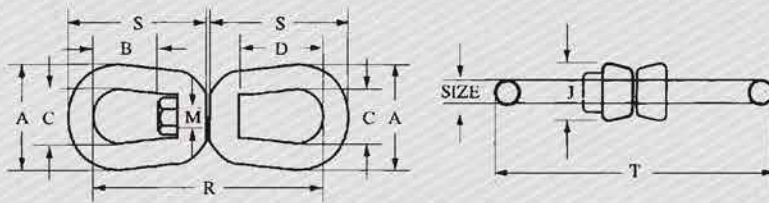
F/0532-87527026

WWW.QDXIANGSHENG.COM

中文名字/  
美式旋转环G-402

English Name/  
REGULAR SWIVELS G-402

剖面图/ Profile



产品数据图/ Product data graph

SIZE(IN)	WORKING LOAD LIMIT(LBS)	DIMENSIONS(IN)									WEIGHT EACH (LBS.)
		A	B	C	D	J	M	R	S	T	
1/4	850	1.25	0.69	0.75	1.06	0.69	0.31	2.94	1.69	3.44	0.21
5/16	1250	1.63	0.81	1	1.25	0.81	0.38	3.56	2.06	4.19	0.39
3/8	2250	2	0.94	1.25	1.5	1	0.5	4.31	2.5	5.06	0.75
1/2	3600	2.5	1.31	1.5	2	1.31	0.63	5.44	3.19	6.44	1.43
5/8	5200	3	1.56	1.75	2.38	1.5	0.75	6.56	3.88	7.81	2.5
3/4	7200	3.5	1.75	2	2.63	1.88	0.88	7.19	4.31	8.69	4.13
7/8	10000	4	2.06	2.25	3.06	2.13	1	8.38	5	10.13	6.25
1	12500	4.5	2.31	2.5	3.5	2.38	1.13	9.63	5.75	11.63	9
1-1/4	18000	5.63	2.69	3.13	3.69	3	1.38	11.13	6.75	13.36	16.37
1-1/2	45200	7	4.19	4	4.19	4	2.25	17.13	10	20.13	49.06

minimum breaking load is 5 times the w.l.l.



P  
36



JAW END  
SWIVELS  
G-403

产品编号 XS-XK-36

翔盛五金

T/0532-87527369 87525178

T/0532-87527026

WWW.QDXIANGSHENG.COM



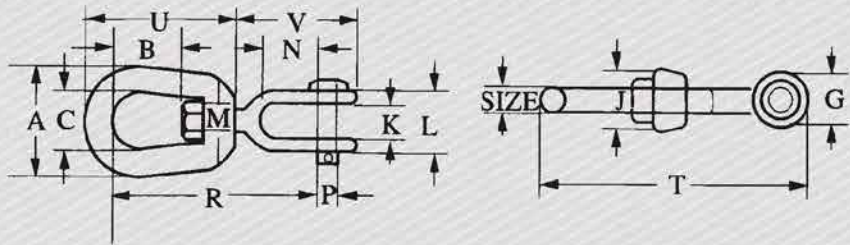
中文名字/

美式旋转环G-403

English Name/

JAW END SWIVELS G-403

剖面图/ Profile



产品数据图/ Product data graph

SIZE(IN)	WORKING LOAD LIMIT(LBS)	DIMENSIONS(IN)														WEIGH T EACH (LBS.)
		A	B	C	G	J	K	L	M	N	P	R	T	U	V	
1/4	850	1.25	0.69	0.75	0.69	0.69	0.47	1.03	0.31	0.88	0.25	2.63	3.38	1.69	1.69	0.25
5/16	1250	1.63	0.81	1	0.81	0.81	0.5	1.13	0.38	0.88	0.31	2.94	3.88	2.06	1.81	0.37
3/8	2250	2	0.94	1.25	1	1	0.63	1.41	0.5	1.06	0.38	3.63	4.75	2.5	2.25	0.7
1/2	3600	2.5	1.31	1.5	1.31	1.31	0.75	1.75	0.63	1.31	0.5	4.5	6.06	3.19	2.88	1.43
5/8	5200	3	1.56	1.75	1.63	1.5	0.94	2.06	0.75	1.5	0.63	5.31	7.31	3.88	3.44	2.48
3/4	7200	3.5	1.75	2	4.88	1.88	1.13	2.53	0.88	1.75	0.75	6.06	8.31	4.31	4	3.88
7/8	10000	4	2.06	2.25	2.13	2.13	1.19	2.75	1	2.06	0.88	7	9.53	5	4.53	5.75
1	12500	4.5	2.31	2.5	2.63	2.38	1.75	3.72	1.13	2.81	1.13	8.56	11.69	5.75	5.94	10.25
1-1/4	18000	5.69	2.69	3.13	3.13	3	2.06	4.31	1.5	2.81	1.38	9.44	13.13	6.75	6.38	15.75
1-1/2	45200	7	4.19	4	5.63	4	2.88	6	2.25	4.44	2.25	14.74	20.84	10	10.84	54.75

minimum breaking load is 5 times the w.l.l.





MBS=2XWLL

产品编号 XS-XK-37

**翔盛五金**

T/0532-87527369 87525178

F/0532-87527026

WWW.QDXIANGSHENG.COM

中文名字/

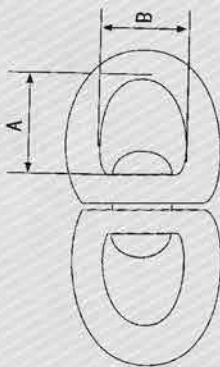
国标八字型转环 国标加固转环

English Name/

MBS=2XWLL

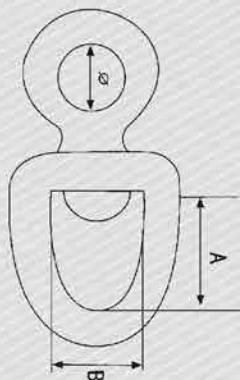
剖面图/ Profile

产品数据图/ Product data graph



国标八字型转环

SIZE	Φ	A	B	拉力 (T)	重量 (KG)
8	8	30	22	0.3	0.15
10	10	38	29	0.7	0.25
12	22	40	32	1.2	0.4
14	14	46	36	2	0.6
16	16	50	40	3	0.85
18	18	55	46	3.5	1.2
22	22	70	55	5	2
24	24	80	64	6	3



国标加固转环

SIZE	Φ	A	B	拉力 (T)	重量 (KG)
12	16	40	32	1.5	0.3
14	21	45	38	2.5	0.45
16	26	50	40	3	0.65
18	27	56	42	3.5	0.85
22	30	63	46	5	1.5
24	31	68	50	6	2
28	39	78	56	8	3

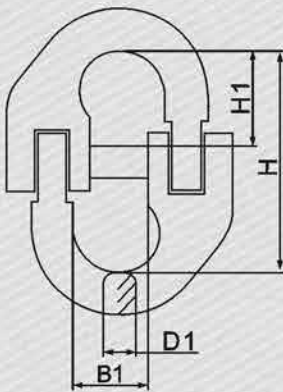




欧式链接双环扣  
CONNECTING LINKS, EUROPEAN TYPE

剖面图/ Profile

产品数据图/ Product data graph



SIZE(MM)	W.L.L/T	DIMENSIONS(MM)				WEIGHT EACH (KG.)
		B1	D1	H1	H	
6-8	1	14.5	7	18.5	47.5	0.14
7/8-8	2	20.5	8.5	22	57	0.16
10-8	3.2	25.7	11	26.5	69	0.34
13-8	5.1	26.5	15.5	32	86	0.65
16-8	8	33	19	39.5	103	1
18/20-8	12.6	41.5	22	46	122	1.78
22-8	15	47	25	53	138	2.1
24/26-8	20.6	59	29	59	152	3.55
30/32-8	32.2	68	36	68	176	6.8

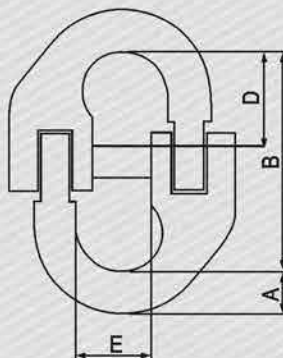
Forged alloy steel. Quenched & tempered. Ultimate load is 4 times working load limit



美式链接双环扣  
CONNECTING LINKS (A 337)

剖面图/ Profile

产品数据图/ Product data graph




SIZE		W.L.L/ (LBS)	DIMENSIONS(IN)				WEIGHT EACH (KG.)
(MM)	(IN)		A	B	D	E	
7	1/4	3500	0.36	1.88	0.78	0.66	0.28
8	5/16	4500	0.39	2.13	0.88	0.69	0.33
10	3/8	7100	0.52	2.5	1.03	0.88	0.73
13	1/2	12000	0.64	3.44	1.44	1.13	1.67
16	5/8	18100	0.75	4.13	1.73	1.41	2.86
20	3/4	28300	0.97	4.94	2.06	1.63	5
22	7/8	34200	1.06	5.5	2.31	2	7.5
25	1	47700	1.22	6	2.5	2.25	11.03
32	1-1/4	72300	1.5	7.43	3.06	2.56	20.38

Forged alloy steel. Quenched & tempered. Test load is 2.2 times working load limit  
Ultimate load is 4 times working load limit





P  
39



**CLEVIS SLIP HOOK**

产品编号: VXS-XK-39

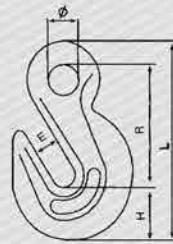
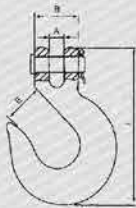
**翔盛五金**

T/0532-87527369 87525178  
F/0532-87527026  
WWW.QDXIANGSHENG.COM

中文名字/  
羊角滑钩

English Name/  
CLEVIS SLIP HOOK

剖面图/ Profile



产品数据图/ Product data graph

羊角滑钩

CLEVIS SLIP HOOK

SIZE(MM)	W.LL/T(4:1)		DIMENSIONS(MM)				WEIGHT EACH(LBS.)
	CARBON	ALLOY	A	B	E	L	
1/4	1950	2750	11	27	23.5	100	0.55
5/16	2875	4300	12.5	33	26	114	0.82
3/8	4000	5250	15	39	32	132.5	1.21
7/16	5000	7000	17	44	40	147	2.09
1/2	6500	9000	19	48	42.5	166	2.99
5/8	9250	13500	18.5	58.7	51	200.5	4.85
3/4	12500	19250	30.5	81	64.5	257	11.28

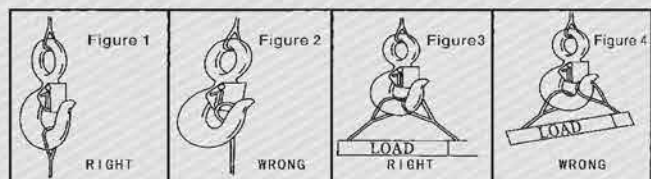
美式眼型抓钩

U.S. TYPE EYE GRAB HOOK

SIZE(MM)	W.LL/T(4:1)		DIMENSIONS(MM)					WEIGHT EACH(LBS.)
	CARBON	ALLOY	R	H	Φ	E	L	
1/4	2600	3500	50.5	18.5	13	9	77	0.28
5/16	3900	4700	56.8	22.7	14	11.5	89	0.45
3/8	5400	7100	65.2	28.3	17	13	104	0.79
1/2	9200	12000	85.5	37.5	22	17	135	1.75
5/8	13000	15800	116	45	30	21	180	3.25
3/4	20200	24700	133.5	55	35	25	211	5.94

# Use Method

## 使用方法

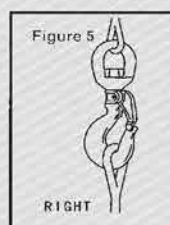


正确

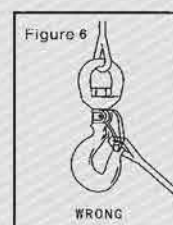
错误

正确

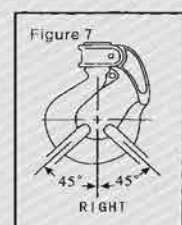
错误



正确



错误



正确



P  
40



CLEVIS GRAB HOOK

产品型号/Model: XS-XK-40

翔盛五金

电话/Phone: 87527369 87525178  
87527026  
www.xiangsheng.com

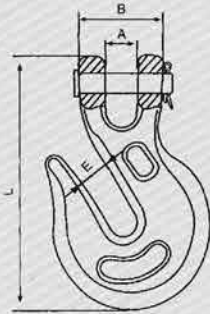


羊角抓钩

CLEVIS GRAB HOOK

产品数据图/ Product data graph

剖面图/ Profile



羊角抓钩

CLEVIS GRAB HOOK

SIZE(MM)	W.L/L/T(4:1)		DIMENSIONS(MM)				WEIGHT EACH(LBS.)
	CARBON	ALLOY	A	B	E	L	
1/4	2600	3500	8.5	25	9.2	78.5	0.36
5/16	3900	4700	10	30.5	11.2	93	0.62
3/8	5400	7100	13	35	12.7	114.5	1
7/16	7200	8750	17	42	14.5	126	1.5
1/2	9200	12000	19	47	17	144	2.22
5/8	13000	15800	23	56	20	177	4.41
3/4	20200	24700	24	66.5	24	207.5	6.5

P  
40



U.S. TYPE EYE SLIP HOOK

产品型号/Model: XS-XK-40

翔盛五金

电话/Phone: 87527369 87525178  
87527026  
www.xiangsheng.com

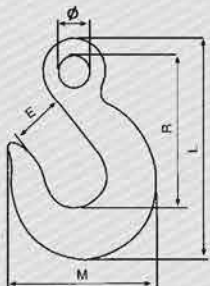


美式眼型滑钩

U.S. TYPE EYE SLIP HOOK

产品数据图/ Product data graph

剖面图/ Profile

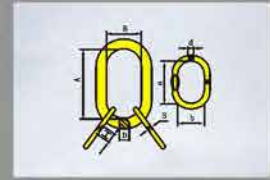
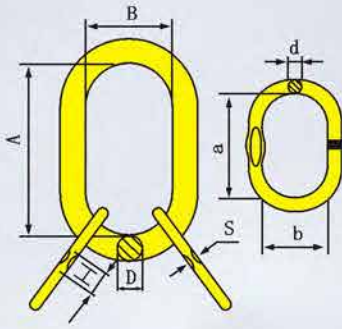


美式眼型滑钩

U.S. TYPE EYE SLIP HOOK

SIZE(MM)	W.L/L/T(4:1)		DIMENSIONS(MM)					WEIGHT EACH(LBS.)
	CARBON	ALLOY	Φ	R	L	M	E	
1/4	1950	2750	12.7	65	92	68.5	23	0.4
5/16	2875	4300	16	72.5	106	76	26	0.62
3/8	4000	5250	18	86.5	124	89.5	33	1.11
7/16	5000	7000	20.5	98.5	142	108	40	1.56
1/2	6500	9000	23	109.5	156	116.5	43	2.1
5/8	9250	13500	28.8	132.5	195	143	52	3.9
3/4	12500	19250	35	147.5	222	169	55	6.93





**A-346(WA-W)  
MASTER LINK  
ASSEMBLY**

产品编号/XS-XK-41

**翔盛五金**

T/0532-87527369 87525178  
F/0532-87527026  
WWW.QDXIANGSHENG.COM

中文名字/

**A-346(WA-W)子母环(不压扁为DIN5688)**

English Name/

**A-346(WA-W)MASTER LINK ASSMBLY (ON FLAT DIN5688 MASTER LINK LINK ASSEMBLY**

剖面图/ Profile

产品数据图/ Product data graph

**A-346(WA-W)子母环(不压扁为DIN5688)**

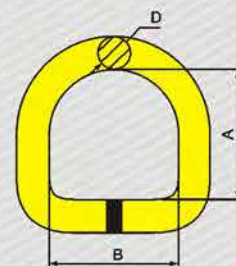
**A-346(WA-W)MASTER LINK ASSMBLY (ON FLAT DIN5688 MASTER LINK LINK ASSEMBLY**

ITEM NO	WEIGHT EACH(KG.)	WLL/T	B.L/T	A	B	D	a	b	d	s	H
07	1.24	3.15	12.6	135	75	18	60	38	13	7	25
08	2.2	4.25	17	160	90	22	70	34	16	7	25
10	3.4	6.7	26.8	180	100	26	85	40	18	11	35
13	6.1	11.2	44.8	200	110	32	115	50	22	13	35
16	9.98	17	68	260	140	36	140	65	26	17	45
18	18.9	21.2	84.8	340	180	45	180	100	32	-	-
20	22.6	26.5	106	350	190	50	180	100	32	-	-
22	25.2	31.5	126	350	190	50	180	100	36	-	-
26	34.26	45	180	400	200	56	200	110	40	-	-
28	47.11	50	200	430	220	63	200	110	45	-	-
32	66.45	63	252	460	250	72	200	110	50	-	-

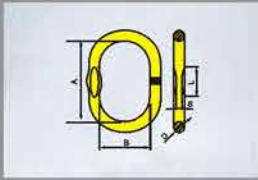
**G80焊接D型环**

**G80 WELDED "D" RING**

ITEM NO	WEIGHT EACH(KG.)	WLL/T	B.L/T	A	B	D
14	0.3	2.5	10	65	55	14
17	0.5	4	16	62	64	17
19	0.7	6.5	26	80	72	19
22	1	8	32	90	76	22







U.S. TYPE EYE  
SLIP HOOK

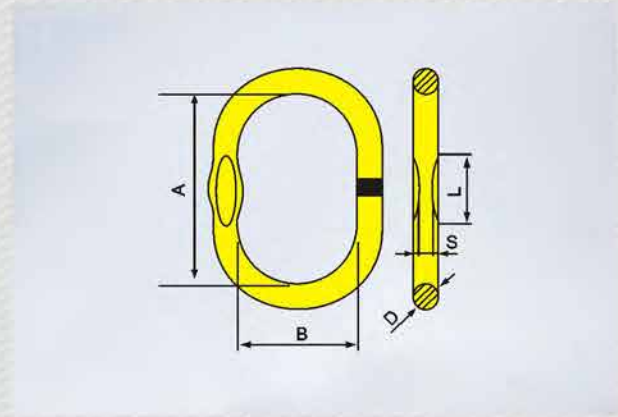
产品编号 XS-XK-42

翔盛五金

T/0532-87527369 87525178

T/0532-87527026

WWW.QDXIANGSHENG.COM



中文名字/

A-343) (WA-W)强力环 ( 不压扁为DIN5688 )

English Name/

A-343) (WA-W)MASTER LINK (WLEDED)(NO FLAT DIN5688 MASTER LINK LINK ASSEMBLY

剖面图/ Profile

产品数据图/ Product data graph

A-343) (WA-W)强力环 ( 不压扁为DIN5688 )


A-343) (WA-W)MASTER LINK (WLEDED)(NO FLAT DIN5688 MASTER LINK LINK ASSEMBLY

ITEM NO.	WEIGHT EACH(KG.)	WLL/T	B.L/T	A	B	D	s	L
76	0.34	1.6	6.4	110	60	13	7	25
87	0.54	2.12	8.48	110	60	16	7	25
108	0.823	3.15	12.6	135	75	18	7	35
13	1.5	5.3	21.2	160	90	22	11	35
16	2.32	8	32	180	100	26	13	45
18	3.95	11.2	44.8	200	110	32	17	45
20	6.34	14	56	260	140	36	-	-
22	8.96	17	68	300	160	40	-	-
26	12.8	31.2	84.8	340	180	45	-	-
32	16.55	31.5	126	350	190	50	-	-
36	23.28	45	180	400	200	56	-	-
40	32	56	224	430	220	63	-	-
72	45.76	63	252	460	250	72	-	-





P  
43



**U.S.TYPE DROP  
FORGED WIRE  
POPE CLIPS G-450**

产品编号 XS-XK-43

**翔盛五金**

T/0532-87527369 87525178  
F/0532-87527026  
WWW.QDXIANGSHENG.COM

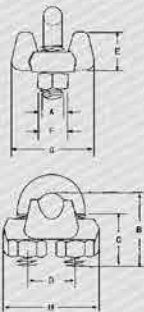
中文名字/

美式模锻卡头 G-450

English Name/

U.S.TYPE DROP FORGED WIRE ROPE CLIPS G-450

剖面图/ Profile



产品数据图/ Product data graph

SIZE (IN.)	DIMENSIONS(IN.)								WEIGHT PER 100(LBS.)
	A	B	C	D	E	F	G	H	
*1/8	0.22	0.72	0.44	0.47	0.37	0.38	0.81	0.99	6
*3/16	0.25	0.97	0.56	0.59	0.50	0.44	0.94	1.18	10
1/4	0.31	1.03	0.50	0.75	0.66	0.56	1.19	1.43	19
5/16	0.38	1.38	0.75	0.88	0.73	0.69	1.31	1.66	28
3/8	0.44	1.50	0.75	1.00	0.91	0.75	1.63	1.94	48
7/16	0.50	1.88	1.00	1.19	1.13	0.88	1.91	2.28	78
1/2	0.50	1.88	1.00	1.19	1.13	0.88	1.91	2.28	80
9/16	0.56	2.25	1.25	1.31	1.34	0.94	2.06	2.50	109
5/8	0.56	2.25	1.25	1.31	1.34	0.94	2.06	2.50	110
3/4	0.62	2.75	1.44	1.50	1.39	1.06	2.25	2.84	142
7/8	0.75	3.12	1.62	1.75	1.58	1.25	2.44	3.16	212
1	0.75	3.50	1.81	1.88	1.77	1.25	2.63	3.47	252
1-1/8	0.75	3.88	2.00	2.00	1.91	1.25	2.81	3.59	283
1-1/4	0.88	4.44	2.22	2.31	2.17	1.44	3.13	4.13	438
1-3/8	0.88	4.44	2.22	2.38	2.31	1.44	3.13	4.19	442
1-1/2	0.88	4.94	2.38	2.59	2.44	1.44	3.41	4.44	544
1-5/8	1.00	5.31	2.62	2.75	2.66	1.63	3.63	4.75	704
1-3/4	1.13	5.75	2.75	3.06	2.92	1.81	3.81	5.24	934
2	1.25	6.44	3.00	3.38	3.28	2.00	4.44	5.88	1300
2-1/4	1.25	7.13	3.19	3.88	3.19	2.00	4.56	6.38	1600
2-1/2	1.25	7.69	3.44	4.13	3.69	2.00	4.05	6.63	1900
**2-3/4	1.25	8.31	3.56	4.38	4.88	2.00	5.00	6.88	2300
3	1.50	9.19	3.88	4.75	4.44	2.38	5.31	7.61	3100
**3-1/2	1.50	10.75	4.50	5.50	6.00	2.38	6.19	8.38	4000





U.S. TYPE MALLEABLE  
WIRE ROPE CLIPS

产品型号 XS-XK-44

翔盛五金

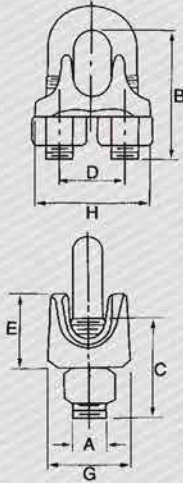
TEL: 87527369 87525178  
TEL: 87527026  
WWW.QDXYWUSHENG.COM



美式玛钢卡头

U.S. TYPE MALLEABLE WIRE ROPE CLIPS

剖面图/ Profile



产品数据图/ Product data graph

美式玛钢卡头

U.S. TYPE MALLEABLE WIRE ROPE CLIPS

SIZE (IN.)	DIMENSIONS(IN.)							WEIGHT PER 100(KG.)
	A	B	C	D	E	G	H	
1/8	10/24	20	14	11	10.8	14	22	1.5
3/16	1/4-20	24	16	13.5	13	15	26	3
1/4	5/16-18	31.5	20	17	15	18.5	32	5.16
5/16	5/16-18	34	22	18.3	16	20	35	5.95
3/8	3/8-16	41.8	27	22.5	22	22	40.5	10.01
7/16	3/8-16	42.8	30	24	22	23	43	11.43
1/2	7/16-14	53.9	35	27	23.3	26	49	17.42
9/16	1/2-13	54.7	40	30	27	26.5	52.5	22.56
5/8	1/2-13	59.2	40	33	28	28.5	57.5	24.84
3/4	9/16-12	68.7	42	34.5	34	32	61	36.53
7/8	5/8-11	78	46	41	38	37	71	53.23
1	5/8-11	67.5	55	45.5	43	42	77.5	66.32



MALLEABLE WIRE  
ROPE CLIPS,TYPE A

产品型号 XS-XK-44

翔盛五金

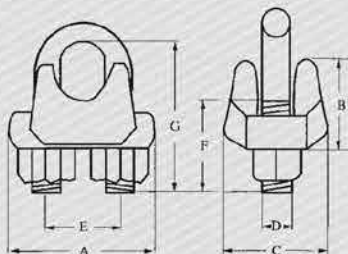
TEL: 87527369 87525178  
TEL: 87527026  
WWW.QDXYWUSHENG.COM



美式玛钢卡头

MALLEABLE WIRE ROPE CLIPS,TYPE A

剖面图/ Profile



产品数据图/ Product data graph

A型玛钢卡头

MALLEABLE WIRE ROPE CLIPS,TYPE A

SIZE (MM)	DIMENSIONS(MM)							WEIGHT KGS/100PCS
	A	B	C	D	E	F	G	
6	22.5	14	17	5	12	14	24.8	2.1
8	28	17	21	6	15	16	30.66	3.7
10	38	21	28	8	19	20	37.95	8.5
12	45	27	34	10	24	25	47.55	16
15	52	32	40	12	29	30	57.15	25
20	62	38	46.5	14	36	36	71.73	43
22	69	43	51.5	16	40	39	78.73	60
25	76	50	56	18	43	44	90.4	82
28	85	57	62	20	48	48	96.9	112
32	93	61	67	22	55	51	110.4	150
40	111	73	81	24	64	62	122.5	254
45	123	86	88	27	72	70	139.5	343
50	135	95	95	30	80	88	156	456





P  
45



**MALLEABLE WIRE  
ROPE CLIPS,TYPE B**

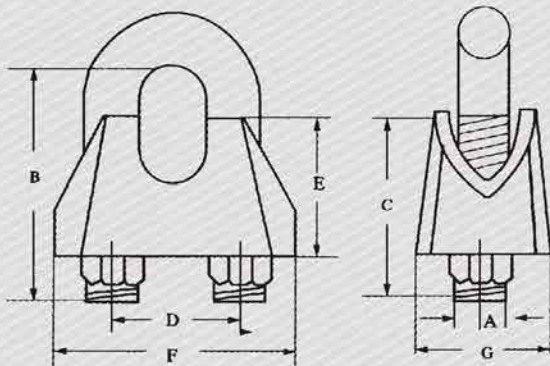
产品型号 XS-XK-45

**翔盛五金**  
T/0532-87527369 87525178  
F/0532-87527026  
WWW.QDXIANSHENG.COM

中文名字/  
日式B型卡头

English Name/  
**MALLEABLE WIRE ROPE CLIPS,TYPE B**

剖面图/ Profile



产品数据图/ Product data graph

SIZE (IN)	DIMENSIONS(MM)							WEIGHT PER 100(KG.)
	A	B	C	D	E	F	G	
1/8	4.00	20.00	12.00	9.00	9.50	19.00	12.00	1.30
3/16	5.00	26.30	14.00	11.00	10.80	22.00	13.50	1.60
1/4	6.00	26.00	14.00	12.50	11.50	25.00	15.50	2.40
5/16	6.00	30.00	16.00	15.50	16.00	31.00	18.00	3.70
3/8	8.00	37.50	20.00	21.00	20.00	40.00	22.00	8.10
1/2	10.00	46.40	24.00	25.00	26.00	47.00	25.00	14.60
5/8	12.00	57.10	28.00	30.00	31.00	55.00	28.00	23.20
11/16	12.00	64.25	40.00	33.00	35.00	58.50	28.50	30.00
3/4	16.00	71.00	34.00	36.50	36.00	65.00	31.00	45.00
7/8	16.00	77.40	38.00	40.00	43.00	72.00	36.00	58.10
1	20.00	88.10	44.00	45.00	48.00	80.00	40.00	89.20



P  
46



DIN 741 WIRE  
ROPE CLIPS

产品编号 XS-XK-46

翔盛五金

T/0532-87527369 87525178

T/0532-87527026

WWW.QDXIANGSHENG.COM



中文名字/

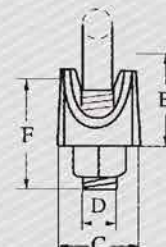
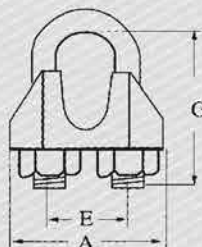
DIN741卡头

English Name/

DIN 741 WIRE ROPE CLIPS

产品概要/ Product summary

剖面图/ Profile



产品数据图/ Product data graph

SIZE (MM)	DIMENSIONS(MM)							WEIGHT PER 100(KG.)
	A	B	C	D	E	F	G	
3	21	10	10	4	9	12	16.6	1.4
5	23	10	11	5	11	13	19.65	1.5
6.5	26	11	12	5	13	15	23.65	2.1
8	30	15	14	6	16	19	28.85	4.1
10	34	17	18	8	19	22	35	6.8
11	36	18	19	8	20	22	37	7.2
13	40	21	23	10	24	30	46.24	13
14	44	22	23	10	25	30	48.24	13.5
16	50	26	26	12	29	33	52.5	21
19	54	30	29	12	32	38	64.5	28
22	61	34	33	14	37	44	72.5	40
26	65	37	35	14	41	45	82.5	44
30	74	43	37	16	48	50	95.6	66
34	80	50	42	16	52	55	105.6	85
40	88	55	45	16	58	60	125.6	104





DIN 1142 WIRE  
ROPE CLIPS

产品编号 XS-XK-47

**翔盛五金**

T/0532-87527369 87525178

F/0532-87527026

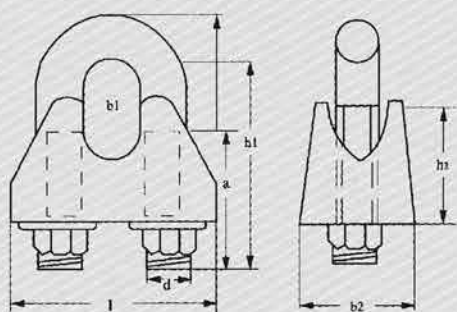
WWW.QDXIANGSHENG.COM



中文名字/  
DIN1142卡头

English Name/  
DIN 1142 WIRE ROPE CLIPS

剖面图/ Profile



产品数据图/ Product data graph

SIZE (MM)	DIMENSIONS(MM)							WEIGHT PER 100(KG.)
	a	b1	b2	d	h1	h2	l	
5	13	7	13	5	25	13	25	2.08
6.5	17	8	16	6	32	14	30	4
8	20	10	20	8	41	18	39	8.2
10	24	12	20	8	46	21	40	9.2
13	30	15	28	12	64	29	55	27.5
16	35	18	32	14	76	35	64	43
19	36	22	32	14	83	40	68	49
22	40	24	34	16	96	44	74	68
26	50	26	38	20	111	51	84	117
30	55	34	41	20	127	59	95	140
34	60	38	45	22	141	67	105	213
40	65	44	49	24	159	77	117	268



P  
48



**GALV SIMPLEX  
WIRE ROPE CLIPS**

产品型号/Model: XK-48

翔盛五金

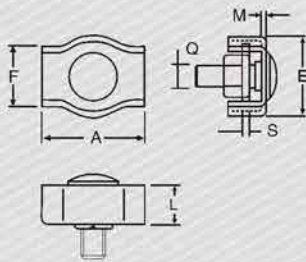
电话/Phone: 87527369 87525178  
87527026  
www.xiangsheng.com



**电镀锌单元宝卡头  
GALV SIMPLEX WIRE ROPE CLIPS**

剖面图/ Profile

产品数据图/ Product data graph



**电镀锌单元宝卡头**

**GALV SIMPLEX WIRE ROPE CLIPS**

SIZE (MM)Φ	DIMENSIONS(MM)							WEIGHT PER
	A	E	F	L	M	Q	S	
2	17.5	12	7.5	5	1	M4	1	2
3	17.5	15	10	6.5	1.5	M4	1.5	2
4	22	18	12	7.5	1.5	M5	1.5	4
5	24	20	14	8.5	1.5	M5	1.5	4
6	30	23	17	10	1.5	M6	1.5	5
8	38	30	23	10	2	M8	2	5

P  
48



**GALV DOUBLE  
WIRE ROPE CLIPS**

产品型号/Model: XK-48

翔盛五金

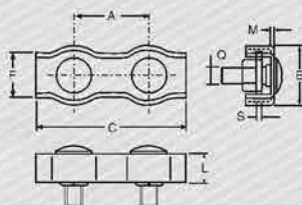
电话/Phone: 87527369 87525178  
87527026  
www.xiangsheng.com



**电镀锌双元宝卡头  
GALV DOUBLE WIRE ROPE CLIPS**

剖面图/ Profile

产品数据图/ Product data graph



**电镀锌双元宝卡头**

**GALV DOUBLE WIRE ROPE CLIPS**

SIZE (MM)Φ	DIMENSIONS(MM)								WEIGHT PER 100(KG.)
	A	C	E	F	L	M	Q	S	
2	20.5	38	12	7.5	5	1	M4	1	1
3	20.5	38	15	10	6.5	1.5	M4	1.5	1.5
4	25	47	18	12	7.5	1.5	M5	1.5	2.5
5	27	51	20	14	8.5	1.5	M5	1.5	3.5
6	33	63	23	17	10	1.5	M6	1.5	5
8	42	76	30	22	14	2	M8	2	10
10	46	88	34	25	16	2	M10	3	18





P  
49



U.S. TYPE STANDARD  
LIGHT DUTY WIRE  
ROPE THIMBLES  
G-411

产品编号/XS-XK-49

**翔盛五金**

T/0532-87527369 87525178  
F/0532-87527026  
WWW.QDXIANGSHENG.COM

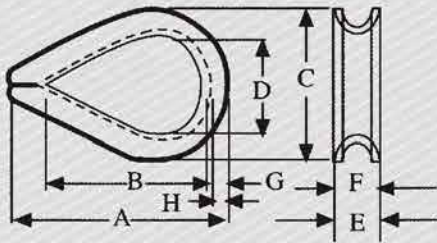
中文名字/

美式钢丝绳轻型套环 G-411

English Name/

U.S. TYPE STANDARD LIGHT DUTY WIRE ROPE THIMBLES G-411

剖面图/ Profile



产品数据图/ Product data graph

ROPE DIA (IN.)	DIMENSIONS(IN.)								WEIGHT 100PCS (LBS.)
	A	B	C	D	E	F	G	H	
1/8	1.94	1.31	1.06	0.69	0.25	0.16	0.05	0.13	2.50
3/16	1.94	1.31	1.06	0.69	0.31	0.22	0.05	0.13	2.50
1/4	1.94	1.31	1.06	0.69	0.38	0.28	0.05	0.13	3.75
5/16	2.13	1.50	1.25	0.81	0.44	0.34	0.05	0.13	3.75
3/8	2.38	1.63	1.47	0.94	0.53	0.41	0.06	0.16	6.25
1/2	2.75	1.88	1.75	1.13	0.69	0.53	0.08	0.19	12.50
5/8	3.50	2.50	2.38	1.38	0.91	0.66	0.13	0.34	25.00
3/4	3.75	2.50	2.69	1.63	1.08	0.78	0.14	0.34	50.00
7/8	5.00	3.50	3.19	1.88	1.27	0.94	0.16	0.44	85.00
1	5.69	4.25	3.75	2.50	1.39	1.06	0.16	0.41	100.00
1-1/8-1-1/4	6.25	4.25	4.31	2.75	1.75	1.31	0.22	0.50	175.00



P  
50



U.S. TYPE EXTRA  
HEAVY DUTY WIRE  
ROPE THIMBLES  
G-414

产品编号 XS-XK-50

翔盛五金

T/0532-87527369 87525178

T/0532-87527026

WWW.QDXIANGSHENG.COM



中文名字/

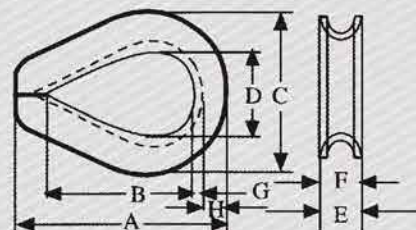
美式重型钢丝绳套环 G-414

English Name/

U.S. TYPE EXTRA HEAVY DUTY WIRE ROPE THIMBLES G-414

产品概要/ Product summary

剖面图/ Profile



产品数据图/ Product data graph

ROPE DIA (IN.)	DIMENSIONS(IN.)								WEIGHT 100PCS (LBS.)
	A	B	C	D	E	F	G	H	
1/4	2.19	1.63	1.50	0.88	0.41	0.28	0.06	0.23	6.75
5/16	2.50	1.88	1.81	1.06	0.50	0.34	0.08	0.28	11.25
3/8	2.88	2.13	2.13	1.13	0.63	0.41	0.11	0.34	25.00
7/16	3.25	2.38	2.38	1.25	0.72	0.47	0.13	0.38	30.00
1/2	3.63	2.75	2.75	1.50	0.81	0.53	0.14	0.41	51.00
9/16	3.63	2.75	2.69	1.50	0.88	0.59	0.14	0.41	51.00
5/8	4.25	3.25	3.13	1.75	0.97	0.66	0.16	0.50	75.00
3/4	5.00	3.75	3.81	2.00	1.22	0.78	0.22	0.66	147.00
7/8	5.50	4.25	4.25	2.25	1.38	0.94	0.22	0.75	175.00
1	6.13	4.50	4.94	2.50	1.56	1.06	0.25	0.88	275.00
1-1/8-1-1/4	7.00	5.13	5.88	2.88	1.81	1.31	0.25	1.13	400.00
1-1/4-1-3/8	9.06	6.50	6.81	3.50	2.19	1.44	0.38	1.13	817.00
1-3/8-1-1/2	9.00	6.25	7.13	3.50	2.56	1.56	0.50	1.13	1175.00
1-5/8	11.25	8.00	8.13	4.00	2.72	1.72	0.50	1.38	1700.00
1-3/4	12.19	9.00	8.50	4.50	2.84	1.84	0.50	1.31	1775.00
1-7/8-2	15.13	12.00	10.38	6.00	3.09	2.09	0.50	1.50	2775.00
2-1/4	17.13	14.00	11.38	7.00	3.63	2.38	0.63	1.63	3950.00





BRITISH STANDARD  
WIRE ROPE  
THIMBLES  
BS464

产品编号:XS-XK-51

**翔盛五金**

T/0532-87527369 87525178

F/0532-87527026

WWW.QDXIANGSHENG.COM

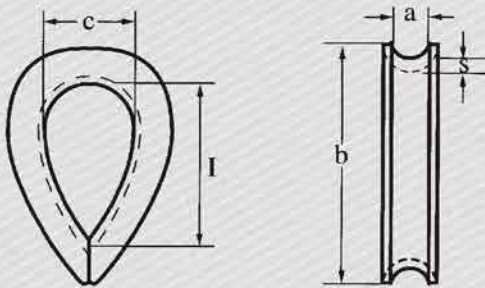
中文名字/

英式钢丝绳套环 BS464

English Name/

BRITISH STANDARD WIRE ROPE THIMBLES BS464

剖面图/ Profile



产品数据图/ Product data graph

ROPE DIA (MM)	DIMENSIONS(MM.)					WEIGHT 100PCS (KG.)
	A	B	I	C	S	
8	8.00	52.00	33.00	23.00	4.00	6.00
10	10.00	64.00	38.00	25.00	4.80	7.60
12	14.00	80.00	44.00	32.00	5.60	18.90
16	16.00	98.00	59.00	41.00	7.90	34.00
19	21.00	124.00	73.00	51.00	9.50	62.40
22	22.00	133.00	83.00	57.00	9.50	75.60
24	25.00	146.00	92.00	64.00	10.30	105.70
26	27.00	162.00	108.00	70.00	10.30	124.70
28	29.00	178.00	111.00	76.00	12.70	151.00
32	33.00	197.00	133.00	95.00	12.70	204.00
38	41.30	254.00	165.10	114.30	17.50	488.00
42	42.90	254.00	165.10	114.30	17.50	499.00
45	50.80	285.80	177.80	127.00	25.40	565.00
48	60.30	317.50	190.50	133.40	28.60	640.00
51	63.50	330.20	203.20	139.70	28.60	660.00
56	66.70	356.60	215.90	146.00	30.20	-
63	69.30	412.80	241.30	158.80	31.80	-
70	85.70	501.6	273	203.20	41.3	-





DIN 6899 TYPE A  
WIRE ROPE  
THIMBLES

产品编号/XS-XK-52

**翔盛五金**

T/0532-87527369 87525178

T/0532-87527026

WWW.QDXIANGSHENG.COM



中文名字/

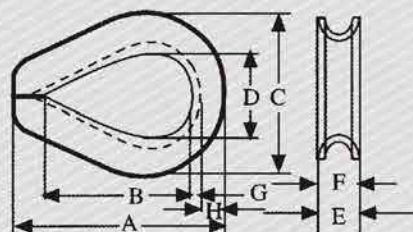
德式钢丝绳套环6899 A

English Name/

DIN 6899 TYPE A WIRE ROPE THIMBLES

产品概要/ Product summary

剖面图/ Profile



产品数据图/ Product data graph

ROPE DIA (MM)	A=SWITCH OPENING	I=INSIDE LENGTH	C=INDIDE WIDTH	WEIGHT 100PCS (KG.)
2.5	3.00	21.50	10.00	0.14
3	3.50	23.50	11.00	0.35
3.5	4.00	26.50	12.00	0.38
4	5.00	28.50	13.00	0.42
5	6.00	30.00	14.00	0.80
6	7.00	33.00	15.00	0.81
7	8.00	35.00	16.00	1.10
8	9.00	39.00	18.00	1.70
9	10.00	43.00	20.00	2.10
10	11.00	47.50	22.00	3.50
11	12.00	51.50	24.00	3.70
12	13.00	56.50	26.00	5.25
13	14.00	61.00	28.00	7.25
15	16.00	69.50	32.00	8.33
16	18.00	78.00	35.00	17.90
18	20.00	86.50	40.00	27.00
20	22.00	95.00	44.00	35.50
24/26	26.00	90	48	52





P  
53



**DIN 6899 TYPE  
B WIRE ROPE  
THIMBLES**

产品编号/XS-XK-53

**翔盛五金**  
T/0532-87527369 87525178  
T/0532-87527026  
WWW.QDXIANGSHENG.COM

中文名字/

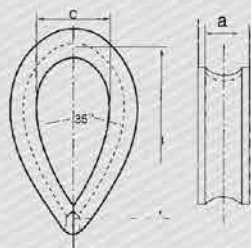
**德式钢丝绳套环6899 B**

English Name/

**DIN 6899 TYPE B WIRE ROPE THIMBLES**

产品概要/ Product summary

剖面图/ Profile



产品数据图/ Product data graph

ROPE DIA (MM)	A=SWITCH OPENING	I=INSIDE LENGTH	C=INDIDE WIDTH	S=BACK STRENGTH	OVERALL LENGTH	WEIGHT 100PCS (KG.)
2.5	3.00	19.00	12.00	1.60	3/4"	0.50
3.5	4.00	21.00	13.00	1.60	1"	0.80
4	5.00	23.00	14.00	1.90	1-1/4"	1.00
5	6.00	25.00	16.00	2.40	1-1/2"	1.60
6	7.00	28.00	18.00	2.40	1-3/4"	1.90
7	8.00	32.00	20.00	2.80	2"	3.00
9	10.00	38.00	24.00	3.10	2-1/4"	4.70
11	12.00	45.00	28.00	3.30	2-1/2"	6.80
13	13.00	48.00	30.00	3.30	2-3/4"	8.00
13	14.00	51.00	32.00	3.70	3"	10.00
15	16.00	58.00	36.00	3.80	3-1/4"	14.50
16	18.00	64.00	40.00	4.70	3-3/4"	20.00
17	17.00	61.00	38.00	4.70	3-1/2"	18.00
18	20.00	72.00	45.00	5.70	4"	29.00
20	22.00	80.00	50.00	5.70	4-1/2"	32.00
22	24.00	90.00	56.00	6.50	5"	47.00
24	26.00	99.00	62.00	6.80	5-1/2"	59.00
26	28.00	112.00	70.00	8.00	6"	80.00
28	30.00	120.00	75.00	8.00	6-1/2"	110.00
30	32.00	128.00	80.00	8.00	7"	123.00
32	34.00	152.00	95.00	8.50	8"	156.00
34	36.00	160.00	100.00	8.50	8-1/2"	176.00
36	38.00	176.00	110.00	8.50	9"	192.00
38	40.00	184.00	115.00	10.50	9-1/2"	292.00
40	42.00	192.00	120.00	10.50	10"	320.00
42	45.00	240.00	150.00	10.50	12"	364.00





U.S ALUMINUM  
SLEEVE  
HOURGALSS

产品编号/XS-XK-54

**翔盛五金**

T/0532-87527369 87525178

T/0532-87527026

WWW.QDXIANGSHENG.COM



中文名字/

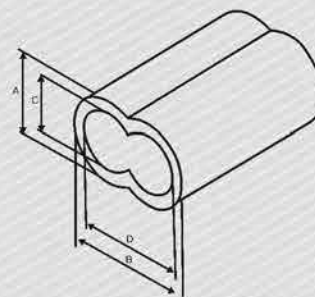
美式八字形铝套

English Name/

U.S ALUMINUM SLEEVE HOURGALSS

产品概要/ Product summary

剖面图/ Profile



产品数据图/ Product data graph

ROPE DIA(IN)	ROPE DIA (MM)	DIMENSIONS(MM.)				STANDARD LENGTH (MM)	NET WEIGHT (g/pc)
		A	B	C	D		
1/16	1	4.37	6.35	1.96	4.00	9.60	0.41
5/64	2	5.56	7.95	2.39	4.80	9.60	0.73
3/32	2.4	7.06	10.26	3.30	6.50	12.70	1.45
1/8	3.2	8.71	12.70	3.96	7.90	15.90	2.90
5/32	4	9.53	14.30	4.75	9.50	17.50	3.63
3/16	5.1	11.20	16.90	5.66	11.40	25.40	7.17
7/32	5.6	12.70	19.10	6.35	12.70	27.00	10.07
1/4	6.4	13.61	20.80	7.37	14.60	28.60	11.43
9/32	7.1	14.27	22.35	7.92	16.00	30.20	12.81
5/16	8	17.45	26.19	9.53	18.30	31.70	20.41
3/8	9.5	19.05	29.36	11.13	21.40	36.50	27.53
7/16	11.1	23.80	36.50	12.70	25.40	42.80	53.52
1/2	12.7	27.00	41.28	14.27	28.50	50.80	79.83





P  
55

ALUMINUM SLEEVE  
OVAL DIN3093

产品编号/XS-XK-55

翔盛五金

T/0532-87527369 87525178  
T/0532-87527026  
WWW.QDXIANGSHENG.COM

中文名字/

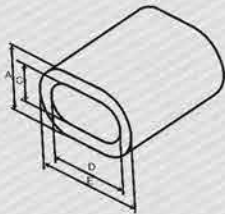
**DIN 3093铝套**

English Name/

**ALUMINUM SLEEVE OVAL DIN3093**

产品概要/ Product summary

剖面图/ Profile



产品数据图/ Product data graph

ROPE DIA (MM)	DIMENSIONS(MM.)				STANDARD LENGTH (MM)	NET WEIGHT (g/pc)
	A	B	C	D		
1	3	4.3	1.30	2.60	5.00	0.11
1.5	3.5	5.3	1.80	3.60	6.00	0.21
2	4.5	6.9	2.40	4.80	7.00	0.24
2.5	5.1	8.1	3.00	6.00	9.00	0.50
3	6.1	9.6	3.50	7.00	11.00	0.84
3.5	7	11	4.00	8.00	13.00	1.32
4	7.9	12.4	4.50	9.00	14.00	1.81
4.5	8.9	14	5.10	10.20	16.00	2.61
5	9.8	15.4	5.60	11.20	18.00	3.57
6	11.6	18.2	6.60	13.20	21.00	5.86
6.5	12.6	19.8	7.20	14.40	23.00	7.85
7	13.6	21.4	7.80	15.6	25.00	9.53
8	15.4	24.2	8.8	17.6	28	13.7
9	17.3	27.2	9.9	19.8	32	19.8
10	19.1	30	10.9	21.8	35	26.4
11	21.1	33.2	12.1	24.2	39	35.8
12	23	36.2	13.2	26.4	42	45.8
13	25	39.2	14.2	28.4	46	59.7
14	26	42.2	15.3	30.6	49	73.5
16	30.9	48.4	17.5	35	56	111
18	34.8	54.4	19.6	39.2	63	159
20	38.5	60.2	21.7	43.4	70	217
22	42.7	67	24.3	48.6	77	292
24	46.4	72.8	26.4	52.8	84	376
26	50.3	78.8	28.5	57	91	481
28	54.5	85.4	31	62	98	603
30	58.1	91.2	33	66.2	105	735
32	62	97.5	35.2	70.4	112	897
34	66.2	104	37.8	75.6	119	1082
36	69.8	109.6	39.8	79.6	126	1275
38	73.8	115.4	41.9	83.8	133	1503
40	77.2	121.2	44	88	140	1734
42	81.2	127.4	46.2	92.4	147	2024
44	85	133.4	48.4	96.8	154	2600
46	89	139.6	50.6	101.2	161	2662
48	92.8	145.6	52.8	105.6	168	3430
52	100.4	157.6	57.2	114.4	182	3960
54	104.4	163.8	59.4	118.8	189	4293
56	108.2	169.8	61.6	132.2	196	6120



P  
56



LEVER TYPE  
LOAD  
BINDERS

产品编号: WS-XK-56

翔皓五金

WP: 87527369 87525178  
WX: 87527026  
WWW.QXDWJGSHENG.COM

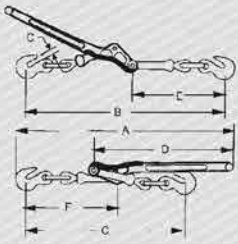


杠杆式紧索具

LEVER TYPE LOAD BINDERS

剖面图/ Profile

产品数据图/ Product data graph



Min-Max Chain Size(in.)	Working Load Limit(lbs.)	Proof Load (lbs.)	Ultimate Load (lbs.)	Weight Each(lbs.)	Handle Length(in.)	Take UP(IN)	Dimensions(in.)						
							A	B	C	D	E	F	G
5/16-3/8	5400	10800	19000	8.37	15.43	4.5	25.2	23.2	19.5	15.55	11.2	11.2	0.51
3/8-1/2	9200	18400	33000	12.2	17.24	4.5	28.5	26.38	22.1	17.6	13	12.2	0.59
1/2-5/8	13000	26000	46000	19.7	21	4.75	33.86	30.12	25.8	20.8	14.4	13.4	0.74
1/4-5/16	2600	5200	9200	3.52	11.42	3.75	18.5	17.3	14.2	11.4	8.27	8.07	0.35

P  
56



RATCHET TYPE  
LOAD BINDERS

产品编号: WS-XK-56

翔皓五金

WP: 87527369 87525178  
WX: 87527026  
WWW.QXDWJGSHENG.COM

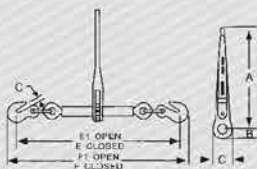


杠杆式紧索具

RATCHET TYPE LOAD BINDERS

剖面图/ Profile

产品数据图/ Product data graph



棘轮式紧索具

RATCHET TYPE LOAD BINDERS

Min-Max Chain Size(in.)	Working Load Limit(lbs.)	Proof Load (lbs.)	Ultimate Load (lbs.)	Weight Each(lbs.)	Handle Length(in.)	Dimensions(in.)							
						A	B	C	E	E1	F	F1	G
5/16-3/8	5400	10800	19000	10.5	13.92	13.92	1.3	2.6	22.64	30.64	25.24	33.24	0.51
3/8-1/2	9200	18400	33000	12.9	13.92	13.92	1.3	2.6	24.13	32.13	12.2	35.04	0.59
1/2-5/8	13000	26000	46000	14.38	21	13.92	1.3	2.6	26.45	34.45	30.07	38.07	0.74
1/4-5/16	2600	5200	9200	3.52	7.16	7.16	0.89	1.17	16.22	21.26	17.79	22.83	0.35





P  
57

SHORT LINK  
CHAIN

产品编号/XS-XK-57

翔盛五金

T/0532-87527369 87525178  
T/0532-87527026  
WWW.QDXIANGSHENG.COM

中文名字/

英式短环 SHORT LINK CHAIN

产品数据图/ Product data graph

### 英式短环SHORT LINK CHAIN

环规格 (LINK SPECIFICATION)				试验负荷 TEST LOAD	破断负荷 BREAKING LOAD	200英尺净重	
线径 (D)		内长 (L)	外宽 (W)			NET WT PER 200FT(KG)	
IN	MM	MM	MM	KG	KG	光身(B.F.)	电镀(H.D.G)
1/8	3.2	16	12	200	400	11.4	11.74
5/32	4	18.5	14.5	300	600	18.6	19
3/16	4.7	19	17	400	800	26.2	27
7/32	5.5	20	19	550	1100	36.8	38
1/4	6.35	22	21	750	1500	50	51.5
5/16	7.94	26.5	27.2	1200	2400	80	82.4
3/8	9.5	30	32	1700	3400	122	125.7
7/16	11.11	34	36	2300	4600	164	169
1/2	12.7	39	43	3000	6000	210	216
5/8	15.8	45	53	4700	9400	334	344
3/4	19	55	63	6800	13600	485	499
7/8	22.2	64	74	9250	18500	656	675
1	25.4	73	84	12150	24300	870	896





MEDIUM LINK  
CHAIN

产品编号 XS-XK-58

**翔盛五金**

T/0532-87527369 87525178

T/0532-87527026

WWW.QDXIANGSHENG.COM



中文名字/

英式中环 MEDIUM LINK CHAIN

产品数据图/ Product data graph

英式中环 MEDIUM LINK CHAIN

环规格 (LINK SPECIFICATION)				试验负荷 TEST LOAD	破断负荷 BREAKING LOAD	200英尺净重	
线径 (D)		内长 (L)	外宽 (W)			NET WT PER 200FT(KG)	
IN	MM	MM	MM	KG	KG	光身(B.F.)	电镀(H.D.G)
1/8	3.2	20	12	200	400	10.8	11
5/32	4	23	15	300	600	17.4	18
3/16	4.7	25	18	400	800	24.4	25
7/32	5.5	26	19	550	1100	34	35
1/4	6.35	26	23	750	1500	48.8	50
5/16	7.94	32	29	1200	2400	76	78
3/8	9.5	35	35	1700	3400	111	114
7/16	11.11	38	38	2300	4600	154	158
1/2	12.7	50	45.5	3000	6000	194	200
5/8	15.8	60	56.7	4700	9400	303	312
3/4	19	76	69	6800	13600	432	445
7/8	22.2	90	80	9250	18500	586	603
1	25.4	105	95	12150	24300	770	792





中文名字/

德国DIN763链条



德国DIN763链条

产品编号/XS-XK-59

**翔盛五金**

T/0532-87527369 87525178

T/0532-87527026

WWW.QDXIANGSHENG.COM

产品数据图/ Product data graph

线径 SIZE (D)	内长 (L)	外宽 (W)	100米重量 WEIGHT PER 100M	工作负荷 WORKING LOAD	破断负荷 BREAKING FORCE	级别(TYPE OF LINK)
MM	MM	MM	KG	N	N	
2	12	8	7	500	1250	A
	22		6			C
2.5	14	10	11	750	2000	A
	24		10			C
3	16	12	16.5	1120	2800	A
	26		15			C
4	19	16	30	2000	5000	A
	32		27			C
5	21	20	50	3150	7750	A
	35		43			C
6	24	24	73	4500	1150	A
	42		63			C
7	28	28	100	6000	15000	A
	49		86			C
8	32	32	130	8000	20000	A
	52		110			C
9	36	36	165	10000	25000	A
	59		141			C
10	40	40	205	10000	25000	A
	65		175			C
11	44	40	205	12500	31000	A
	72		211			C
12	48	48	290	18000	45000	A
	78		255			C
13	52	52	345	21200	53000	A
	82		295			C



P  
60



DIN 766 LINK  
CHAIN

产品编号 XS-XK-60

**翔盛五金**

T/0532-87527369 87525178

T/0532-87527026

WWW.QDXIANGSHENG.COM



中文名字/

德国DIN766链条

DIN 766 LINK CHAIN

产品数据图/ Product data graph

线径 SIZE (D) DIN766 A/C标准链条		内长 (L)			内宽 (b1)	外宽 (b2)	11环长 LENGTH PER 11 LINKS			每米重 WEIGHT PER M	破断负荷 BREAKING LOAD
MM	±MM	MM	+MM	-MM	MM	MM	MM	+MM	-MM	KG	KN
2	0.2	12	0.2	0.2	3.5	7.5	132	1	0.5	0.07	1.25
3	0.2	16	0.2	0.2	4.2	11	176	1.4	0.7	0.16	4
4	0.2	16	0.3	0.2	5	13.7	176	2.1	1.1	0.32	8
5	0.2	18.5	0.4	0.2	6	17	203.5	2.4	1.2	0.5	12.5
6	0.2	18.5	0.4	0.2	7.2	20.2	203.5	2.4	1.2	0.8	16
7	0.3	22	0.4	0.2	8.4	23.8	242	3	1.4	1.1	25
8	0.3	24	0.4	0.2	9.6	27.2	264	3.2	1.5	1.4	32
9	0.4	27	0.5	0.3	10.8	30.6	297	3.6	1.8	1.8	40
10	0.4	28	0.5	0.3	12	34	308	3.7	1.9	2.2	50
11	0.4	31	0.5	0.3	13.2	37.4	341	4	2	2.7	63
12	0.3	36	0.6	0.3	14.4	40.8	396	4.4	2.2	3.1	72.4
13	0.5	36	0.6	0.3	15.6	44.2	396	4.6	2.4	3.8	80
14	0.6	41	0.7	0.4	16.8	47.6	451	5.4	2.7	4.4	125
16	0.6	45	0.8	0.4	19.2	54.4	495	6	3	5.7	160
18	0.9	50	0.8	0.4	21.6	61.2	550	6.6	3.3	7.3	180
19	0.4	53	0.9	0.4	22.8	64.6	583	7	3.7	7.97	200
20	1	56	1	0.5	24	68	616	7.4	307	9	243
23	1.2	64	1.1	0.5	27.6	78.2	704	8.4	4.2	12	250
26	1.3	73	1.2	0.6	31.2	88.4	803	9.6	4.8	15	320
28	1.4	78	1.3	0.65	33.8	95.2	858	10.2	5.1	18	400
30	1.5	84	1.4	0.7	41	102	924	11	5.5	19.5	450
32	1.6	90	1.5	0.75	43	108.8	990	11.8	5.9	23	500





### 电力金具系列

产品编号/XS-XK-61

**翔盛五金**

T/0532-87527369 87525178

T/0532-87527026

WWW.QDXIANGSHENG.COM



中文名字/

## 电力金具系列

产品数据图/ Product data graph





P  
62



# 锻造件

产品编号XS-XK-62

**翔盛五金**

T/0532-87527369 87525178

T/0532-87527026

WWW.QDXIANGSHENG.COM



中文名字/

# 锻造件

产品数据图/ Product data graph

