

www.jorgensenponyclamp.com

**CLAMP FIXTURES FOR
PIPE BAR CLAMPS
C-CLAMPS
SPRING CLAMPS
BAND CLAMPS**



JORGENSEN® PONY®

木质平行夹 管子夹 C字夹 F夹 布带夹
固定夹 弹簧夹 特色产品 台虎钳 斜锯和斜锯盒

An early factory



ABOUT PONY AND JORGENSEN TOOLS

America's Favorite National Brand for 115 Years

Pony and Jorgensen are iconic American clamping brands that began with the Adjustable Clamp Company incorporated in Chicago, IL in 1903. Founder Adele Holman had the vision of growing her company through product innovation, excellent customer service, and superior performing tools. Today, we still honor that tradition, and making the highest quality clamps is still our driving passion. In fact, clamping tools are the only products the Pony and Jorgensen brands offer. And, we are the only brands to do so for 115 years. We have one simple mission – serving customers with the best products and most trusted reputation in the industry.

The Pony and Jorgensen brands were founded by Ms. Adele Holman, a former professional opera singer, Hans Jorgensen, a Danish cabinet maker, and Marcus Russ, a tool salesman. Mr. Jorgensen held a patent on his Hand Screw that featured steel adjusting screws rather than the common wooden screws used in other products. His hand screw also used “adjustable” clamping jaws to accommodate angles in the work being clamped. That single product was the beginning of the company. Ms. Holman put up most of the starting capital, while Mr. Jorgensen oversaw production.

In the early days, Ms. Holman famously signed documents and correspondence as A. V. Holman, carefully hiding her gender since women at the time were not supposed to be running manufacturing companies. She became president in 1908 and held that position until she passed away in 1932, the first of 5 generations of Holman family members to run the company.

The product line was expanded beyond the original hand screws beginning in 1918 with the introduction of iron clamping products including C-clamps and bar clamps. In 1926, the company introduced an innovative pipe clamp fixture that converted common pipe into a custom, consumer-made clamp and the now famous Pony clamp was born. Countless innovations followed, making the Pony and Jorgensen brands synonymous with durable, high quality clamping products.

In 2016, the Pony and Jorgensen brands were acquired by GreatStar Industrial, one of the world's leading hand tool manufacturers. GreatStar's commitment to quality and to the integrity of the original Pony and Jorgensen product designs is absolute, with many of today's tools being manufactured off the original dies and equipment. Today's Pony and Jorgensen clamps are made to standards that meet or exceed the original product specifications so a new generation of craftsmen can continue to experience the woodworking tradition that is Pony and Jorgensen clamping products.

PONY 工具公司简介

全美最受欢迎的夹具品牌， 115 年历史的老字号

Pony 和 Jorgensen 是美国家喻户晓的夹具品牌，1903 年成立于伊利诺伊州，芝加哥，前身为可调节夹具公司。公司创始人 Adele Holman 高瞻远瞩，精益求精，致力于产品的更新换代，不断提高产品品质，同时为顾客提供满意超值的服务，将公司一步步发展壮大。直至今日，我们一直恪守这一传统理念，致力于生产优质夹具。Pony 和 Jorgensen 专业生产夹具，是唯一专门生产夹具的百年品牌。时代变迁，大道至简，品牌的使命就是为顾客提供最优质的产品，打造客户最信赖的品牌。Pony 和 Jorgensen 创始人中，Adele Holman 曾是一名专业的歌剧演唱家，Hans Jorgensen 是一名丹麦木工，Marcus Russ 是一名工具销售商。Jorgensen 先生发明了一款木工夹并申请了专利，相比使用木质丝杆的传统木工夹，这款木工夹使用了钢制丝杆。此外，这款木工夹夹体可调节，适合夹持不规则形状的工件。这款木工夹成为了公司销售的第一款产品。Holman 女士负责筹集公司启动资金，Jorgensen 则负责监管生产。

那时候人们还不认可妇女开办工厂，因此 Holman 女士在文件信函中署名 A. V. Holman，这一署名后来广为人知，并巧妙隐藏了她的性别。1908 年 Holman 女士成为公司总裁，此后兢兢业业为公司服务了一生，直至 1932 年去世，是 Holman 家族五代总裁中的第一代掌门人。

自 1918 年公司生产第一款木工夹以来，不断推陈出新，完善产品种类，继而推出了 C 字夹和 F 夹。1926 年公司又创新推出了管子夹具，可将普通钢管转换为量身定制的管子夹，至此风靡美国的 Pony 管子夹诞生了。此后不断有新产品问世，Pony 和 Jorgensen 品牌也成为高品质、经久耐用夹具的代名词。

2016 年，Pony 和 Jorgensen 品牌被巨星科技股份有限公司收购。巨星科技为世界领先的手工具供应商，严格恪守对品质及对 Pony 和 Jorgensen 产品原始设计完整性的承诺，至今为止，很多产品仍是由最初的模具和设备生产的。如今的 Pony 和 Jorgensen 夹具品质更胜一筹，为一次又一次的工匠提供高品质的产品。



目录 / CONTENTS

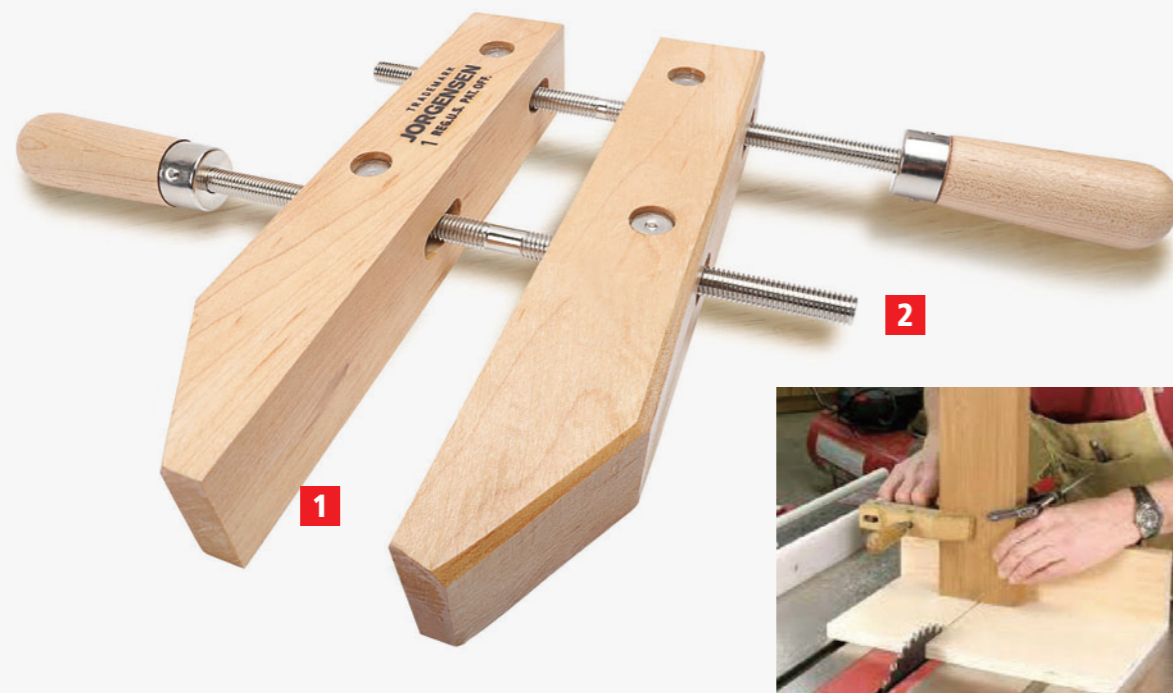


	▶ 木质平行夹 HANDSCREW CLAMPS	1
	▶ 管子夹 PIPE CLAMP FIXTURES	5
	▶ C字夹 C CLAMPS	7
	▶ F夹 BAR CLAMP	10
	▶ 布带夹 BAND CLAMP	16
	▶ 固定夹 HOLD DOWN CLAMP	25
	▶ 弹簧夹 SPRING CLAMP	31
	▶ 特色产品 SPECIALTY PRODUCTS	34
	▶ 台虎钳 VISE	35
	▶ 斜锯和斜锯盒 MITER BOX & SAW	40

木质平行夹 | ADJUSTABLE HANDSCREW

JORGENSEN 木质平行夹夹持牢固，与其它夹具相比，具有夹持面积大、夹紧力度强的优点。夹体间的角度可根据具体工件来调节。夹体可轻松夹持不规则工件，不会磨损工件表面。JORGENSEN 木质平行夹用途广泛，满足您对夹持力度的要求，使用时拆装方便快捷

JORGENSEN handscraws hold tightly over broad areas, providing greater reach and a wider distribution of pressure than other clamps. The angle between the jaws can be adjusted to fit the work. The jaws hold odd shapes easily, are capable of overlapping, and provide protection against marring of finished surfaces. The versatility of JORGENSEN Handscraws also allows for specific, concentrated clamping pressure where required. JORGENSEN Handscraws are fast and easy to apply and remove.



1. 夹体材质为风干硬枫木，精挑细选平直纹理，防止刮伤工件表面
2. 丝杆和螺母材质为冷拉钢，带特制双向螺纹，经机加工，具有操作迅速、夹持牢固、经久耐用的特点

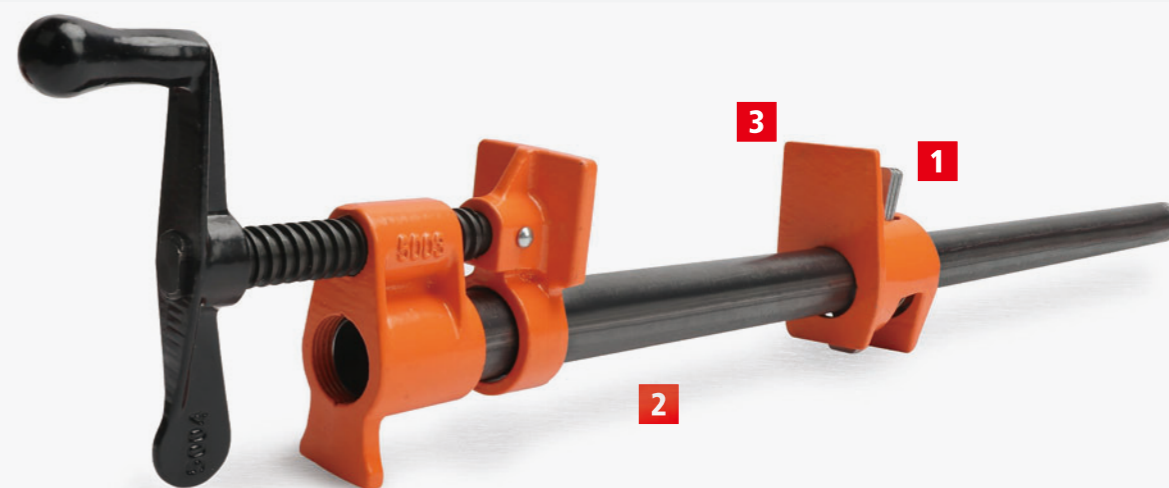
- Wood jaws are seasoned hard maple, selected straight grain; provide protection against marring of finished surfaces
- Spindles and nuts are cold-drawn steel with special double-lead threads; machined for quick adjustment, strength and durability

货号 NO	夹体长度 JAW LENGTH	最大开口尺寸 MAX. OPENING	喉深 REACH	工作负载 LOAD LIMIT	装箱数 QTY
3/0	6"	3"	2-3/4"	/	3
0	8"	4-1/2"	3-7/8"	/	3
1	10"	6"	5"	/	3
2	12"	8"	6"	/	3

3/4" PONY 50 系列管子夹 | PIPE CLAMP FIXTURES

市场上最受欢迎、使用广泛的一款夹具。可安装在任意长度的两端带螺纹 3/4" 钢管上，无需工具即可安装。

Pipe clamp Fixture for black pipe
America's most popular, most widely used clamp fixture design. Mounts on any length 3/4" black pipe with both ends threaded. No tools required for assembly.



1. 多锁片设计，夹持力度更强，可沿钢管任意部位夹持
2. 夹持面面积约为 11.29 平方厘米

- Multiple-Disc-Clutch design allows secure
- hold at any point along pipe" Clamping faces are approximately 1-3/4" square

货号 NO	配套钢管外径 PIPE USED	装箱数 QTY
50	Φ3/4"	6



管子夹 | PIPE CLAMP FIXTURES

钢管长度决定夹持范围
多锁片设计，夹持力度强，可沿钢管任意部位夹持
夹持面面积约为 9.68 平方厘米

Clamping capacity only limited by length of pipe used
Multiple-Disc-Clutch design allows secure hold at any point along pipe
Clamping faces are approximately 1-1/2" square

1/2" PONY 52 系列管子夹

- 您可将 PONY 管子夹安装在任意长度的 1/2" 两端带螺纹钢管上，打造量身定做的长度，无需工具即可安装。

PIPE CLAMP FIXTURE FOR 1/2" BLACK PIPE

- Create your own pipe clamp of various lengths, with the PONY Pipe Clamp Fixture. Mounts on any length 1/2" black pipe with both ends threaded. No tools required for assembly for assembly.

货号 NO	配套钢管外径 PIPE USED	工作负载 LOAD LIMIT	装箱数 QTY
52	Φ1/2"	454KG	6

3/4" 高脚管子夹

- 可安装在任意长度的 3/4" 两端带螺纹钢管上，打造量身定做的长度，无需工具即可安装。钢管长度决定夹持范围。

PRO PIPE CLAMP FIXTURE FOR 3/4" BLACK PIPE

- Create your own pipe clamp of various lengths, No tools required for assembly. Mounts on any length 3/4" black threaded pipe. Clamping capacity only limited by length of pipe used.

货号 NO	配套钢管外径 PIPE USED	工作负载 LOAD LIMIT	装箱数 QTY
55	Φ3/4"	544KG	4

支撑脚和夹体更高、更宽
喉深为 2-1/8"，腿高 2-1/2"
多锁片设计，可沿钢管任意部位夹持
高脚可悬挂

Wider and taller stance, taller and wider jaws
Clamping jaws are 2-1/8" and clamps sit 2-1/2" above work surfaces
Multiple-Disc-Clutch design allows secure hold at any point along pipe
Built in clamp hanger feature



3/4" PONY 56 系列深喉管子夹

- 可打造量身定做的长度，2-1/2 英寸深喉设计。翻转头部还能实现扩张功能。可安装在任意长度的 3/4" 两端带螺纹钢管上。

PIPE CLAMP FIXTURE FOR 3/4" BLACK PIPE (DEEP-REACH)

- Create your own pipe clamp of various lengths, 2-1/2 inch deep reach design. Heads reverse to use as spreader clamp. Mounts on any length 3/4" black pipe with both ends threaded.

NO 货号	PIPE USED 配套钢管外径	LOAD LIMIT 工作负载	QTY 装箱数
56	Φ3/4"	544KG	6

钢管长度决定夹持范围
多锁片设计，可沿钢管任意部位夹持

Multiple-Disc-Clutch design allows secure hold at any point along pipe
Clamping capacity only limited by length of pipe used"



C 字夹 | C-CLAMP

Pony C 字夹是一款质优价廉的产品，丝杆为机制螺纹，进出顺滑，并经过发黑防锈处理。夹体表面橙色喷塑，颜色醒目并提供持久保护。

This economy line of Pony "C" clamps provides quality at an affordable price. Smoothly cut acme threads are protected with a black finish. Iron frames are powder-coated bright Pony orange for high visibility and lasting protection.

- 质优价廉，性价比高
- 发黑丝杆，横把和活络头
- 表面 PONY 橙色喷塑
- Economy line providing quality products at an affordable price
- PONY Orange" powder coated castings
- Black finished screw, Style #2600 handle and swivel



NO 货号	MAX. OPENING 最大开口尺寸	LOAD LIMIT 工作负载	REACH 喉深	QTY 装箱数
2610	1"	180KG	1"	30
2615	1-1/2"	180KG	1-1/2"	20
2620	2"	180KG	1"	20
2622	2-1/2"	270KG	1-3/8"	12
2625	2-1/2"	270KG	2-1/2"	12
2630	3"	360KG	2"	10
2640	4"	360KG	3"	12
2650	5"	450KG	3-1/4"	12
2660	6"	450KG	3-1/2"	12
2680	8"	450KG	4"	6

轻型 C 字夹

- 市场上最受欢迎和产线最完整的轻型 C 字夹。是大部分 DIY 和家庭用户的首选。多种夹体设计一应俱全，带全封闭丝杆。

PONY C-CLAMPS LIGHT DUTY C-CLAMP

- America's most popular and complete line of light-duty "C" clamps. Preferred for most do-it-yourself and household clamping. This line features a complete variety of frame designs with full-closing screws.

货号 NO	最大开口尺寸 MAX. OPENING	工作负载 LOAD LIMIT	喉深 REACH	装箱数 QTY
1440-C	4"	540KG	3"	6
1450-C	5"	540KG	3-1/4"	6
1460-C	6"	540KG	3-1/2"	6
1480-C	8"	540KG	4"	6



中型 C 字夹

- 一款通用的 C 字夹，适合常规工业作业
- 夹体更长，特制梯形螺纹丝杆，经久耐用
- 球墨铸铁夹体，经热处理，夹体加强筋设计，夹持力度更强

CARRIAGE C-CLAMP

- General purpose C-clamps for regular duty industrial service
- Longer frame hubs and special, square thread screws
- Heat treated, ductile iron frame; ribbed to resist side strain

货号 NO	最大开口尺寸 MAX. OPENING	工作负载 LOAD LIMIT	喉深 REACH	装箱数 QTY
102	2-1/2"	630KG	1-3/4"	6
103	3"	810KG	1-7/8"	6
104	4"	1000KG	2-1/8"	6
105	5"	1000KG	2-1/2"	6
106	6"	1000KG	2-3/4"	6
108	8"	1000KG	3-1/4"	6
110	10"	1000KG	3-5/8"	6
112	12"	1000KG	3-5/8"	6



轻型 C 字夹 | CARRIAGE C-CLAMP

尺寸小巧，质地轻盈，专为超轻型作业设计生产，夹体设计多种多样，横把类型应有尽有，各尺寸全封闭丝杆一应俱全。

Small, light-weight "C" clamps designed and manufactured for very light-duty industrial service. Complete variety of frame designs and handle types. Full-closing screws in all sizes.

轻型 C 字夹

- 尺寸小巧，质地轻盈，专为轻型作业设计生产
- 多种夹体设计，全封闭丝杆，坚韧牢固；表面镀层明亮光滑；丝杆转动平稳顺畅

PONY C-CLAMPS

- Small, light weight designed, manufactured for light duty industrial service
- Complete variety of frame designs and strengths Screw is full length, full closing; bright plated steel; smoothly rolled threads

货号 NO	最大开口尺寸 MAX. OPENING	工作负载 LOAD LIMIT	喉深 REACH	装箱数 QTY
231	7/8"	400KG	1-1/8"	12
232	2"	400KG	1"	12
233	1-3/8"	400KG	1-1/2"	12
237	1-1/4"	200KG	3-1/2"	12
242	2-1/2"	680KG	1-3/8"	12
243	3"	680KG	1-3/8"	12
244	2-1/2"	990KG	2-1/2"	12
245	2-3/8"	1000KG	4-3/4"	6
246	2-3/8"	1000KG	6-1/4"	6



是最通用的一款 C 字夹，适合常规作业，夹体比例匀称，经热处理后坚固耐用。夹体更长，特制梯形螺纹丝杆，经久耐用

Most universally-used general-purpose "C" clamps for regular-duty industrial service. Frames are liberally proportioned and heat-treated for maximum strength. Longer frame hubs and special, square-thread screws assure durability

锻造 C 字夹 | DROP-FORGED STEEL C-CLAMP

锻压碳钢夹体，适合多种常规作业。

Regular-duty design with drop-forged carbon steel frames for general-purpose industrial service.

锻造 C 字夹

- 锻压钢夹体，适合重型作业
- 夹体为碳钢锻件，经热处理；活络头可更换
- 丝杆转动平稳顺畅，钢制转动横把

DROP-FORGED STEEL C-CLAMP

- Drop forged steel frames for heavy duty industrial service
- Frame, screw, handle and swivel (turned steel, ball and socket type) are heat treated drop forged carbon steel
- Smoothly rolled threads; steel sliding pin handle

货号 NO	最大开口尺寸 MAX. OPENING	工作负载 LOAD LIMIT	喉深 REACH	装箱数 QTY
402-D	2"	1500KG	2"	6
403-D	3"	1590KG	2-3/8"	6
404-D	4"	1860KG	2-3/4"	6
406-D	6"	2450KG	3-5/8"	6
408-D	8"	2670KG	4-1/2"	6
410-D	10"	2810KG	5-3/8"	2
412-D	12"	4220KG	5-3/4"	2



三头 C 字夹 | 3 WAY EDGING CLAMP

货号为 3325，适合轻型作业，广泛应用于维修装饰线条、台面边缘和饰面板

Popular, light-duty #3325 is widely used to repair molding, decorative trim, countertop edging and veneer strips

三头 C 字夹

- 是胶合、修边、焊接、紧固等作业的理想夹持工具

3 WAY EDGING CLAMP

- Ideal for gluing, trimming, welding, fastening and other types of clamping

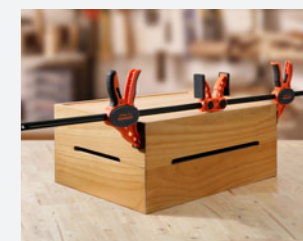
货号 NO	最大开口尺寸 MAX. OPENING	工作负载 LOAD LIMIT	喉深 REACH	装箱数 QTY
3325	2-1/4"	360KG	2-1/2"	12



中型快速夹 | MEDIUM DUTY- EXPANDABLE E-Z HOLD MEDIUM DUTY/SPREADER CLAMP-EXPANDABLE

此款中型快速夹使用便捷，是工具爱好者和专业人士使用的理想工具。流线型手柄握持舒适，快速释放柄可迅速夹紧工件。可迅速转换活动夹头，使之具有扩张功能。334 系列的快速夹，专利拼接功能，可将两个快速夹组合在一起，得到一把新的快速夹，夹头开口尺寸大于单把开口尺寸的两倍。购买两把的话，相当于购买一个 2 倍以上开口尺寸的快速夹。

The name says it all. These unique bar clamps are some of our easiest to use clamps and are ideal for hobby, craft and model projects. The contoured comfort grip and quick release lever make it simple to get a firm grip in a flash. Not only can these versatile clamps can be easily converted into a spreader clamps, the Medium Duty #33400 models also feature our exclusive patented feature that allow two clamps to be joined together to make a clamp with more than double the opening capacity of a single clamp. With every two clamps you buy, it's like getting a third, larger clamp for free!



Expandable



Spreader

1. 拼接功能，可将两个快速夹组合在一起，得到一把新的快速夹，夹头开口尺寸大于单把开口尺寸的两倍
2. 转换后有扩张功能
3. 夹头带护套，手柄握持舒适，带快速释放柄

- Allows two clamps to be joined together to make a clamp with more than double the opening capacity of a single clamp
- Can also be converted to a spreader clamp
- Protective pads, contoured comfort grip and quick release lever

货号 NO	最大开口尺寸 MAX. OPENING	工作负载 LOAD LIMIT	喉深 REACH	装箱数 QTY
33406	6"	140KG	3-1/3"	6
33412	12"	140KG	3-1/3"	6
33418	18"	140KG	3-1/3"	6
33424	24"	140KG	3-1/3"	6
33436	36"	140KG	3-1/3"	6
410-D	10"	2810KG	5-3/8"	2
412-D	12"	4220KG	5-3/4"	2

轻型 F 夹 | LIGHT DUTY CLAMP

此款 F 夹使用便捷，是工具爱好者和专业人士使用的理想工具。流线型手柄握持舒适，快速释放柄可迅速夹紧工件。可迅速转换活动夹头，使之具有扩张功能。334 系列的快速夹，专利拼接功能，可将两个快速夹组合在一起，得到一把新的快速夹，夹头开口尺寸大于单把开口尺寸的两倍。购买两把的话，相当于购买一个 2 倍以上开口尺寸的 F 夹。

The name says it all. These unique bar clamps are some of our easiest to use clamps and are ideal for hobby, craft and model projects. The contoured comfort grip and quick release lever make it simple to get a firm grip in a flash. Not only can these versatile clamps can be easily converted into a spreader clamps, the Medium Duty #33400 models also feature our exclusive patented feature that allow two clamps to be joined together to make a clamp with more than double the opening capacity of a single clamp. With every two clamps you buy, it's like getting a third, larger clamp for free!

三头 C 字夹

- 拼接功能，可使两把夹具组合在一起得到一把新的快速夹，夹头开口尺寸大于单把开口尺寸的两倍
- 转换后有扩张功能
- 夹头带护套，手柄握持舒适，带快速释放柄

3 WAY EDGING CLAMP

- Allows two clamps to be joined together to make a clamp with more than double the opening capacity of a single clamp
- Can also be converted to a spreader clamp
- Protective pads, contoured comfort grip and quick release lever



货号 NO	最大开口尺寸 MAX. OPENING	喉深 REACH	工作负载 LOAD LIMIT	装箱数 QTY
33804	4"	1-1/2"	20KG	20
33808	8"	1-1/2"	20KG	20



轻型铝合金 F 夹 | ALUMINUM BAR CLAMP

质地轻盈，夹紧力强，此款 F 夹既适合销售又适合作为 DIY 工具。阳极氧化铝尺杆抗锈蚀；工作面矩形设计，在边缘胶合作业中可牢牢夹持。活动夹头带弹簧自锁装置，可锁定在尺杆任意凹槽处。

Excellent strength-to-weight ratio makes these strong, light-weight aluminum bar clamps perfect for both commercial and do-it-yourself applications. Their anodized aluminum bars are rust-resistant and rectangular design makes for a stable clamping surface for edge gluing. The tail-stop is a trigger-spring type which locks into the notches on the bar.

铝合金 F 夹

- 质地轻盈，夹紧力强
- 阳极氧化铝尺杆抗腐蚀
- 活动夹头带弹簧自锁装置，可锁定在尺杆任意凹槽处

JORGENSEN ALUMINUM BAR CLAMPS

- Excellent strength-to-weight ratio
- Rust-resistant anodized aluminum bars
- Trigger-spring type tail-stop locks into notches on bar



货号 NO	最大开口尺寸 MAX. OPENING	喉深 REACH	工作负载 LOAD LIMIT	尺杆 BAR	装箱数 QTY
3524	24"	1-5/8"	450KG	1-5/16" x 13/16"	6
3536	36"	1-5/8"	450KG	1-5/16" x 13/16"	6
3548	48"	1-5/8"	450KG	1-5/16" x 13/16"	6
3560	60"	1-5/8"	450KG	1-5/16" x 13/16"	6
3572	72"	1-5/8"	450KG	1-5/16" x 13/16"	6

重型快速铁 F 夹 | JORGENSEN STEEL BAR CLAMPS

为专业的木匠、木工、金属加工及喜欢自己动手的家装爱好者设计。此款 F 夹材质优良，效果专业。钢制尺杆材质坚韧、质地轻盈，抗锈蚀。多锁片能够使活动夹体紧紧固定在尺杆的任意位置。保护套可保护工件免受刮擦。由于能迅速调整活动夹头，F 夹常常替代 C 字夹被广泛使用。

Steel Bar Clamps are used by professional cabinet makers, carpenters, woodworkers, metalworkers, and with confidence by the do-it-yourself homeowner on weekend projects. Our clamps are proudly made using high quality materials for lasting value and great performance. Strong, lightweight steel bars are rust-resistant. Our own 'Multiple-Disc-Clutch' holds securely at any point along the bar. Protective pads keep your project free from marring. They come in three strengths: Heavy, Medium and Light-Duty. Steel Bar Clamps are often used in place of 'C-Clamps' because of their instant adjustability from the sliding head.



1. 冷拉钢丝杆，带特制平滑梯形螺纹
2. 球墨铸铁夹体表面橙色喷塑，防锈醒目
3. 多锁片设计——3 片锁片经过加硬和电镀处理，并带弹簧自锁，方便调节

- Cold-drawn steel screw with special, smoothly cut Acme threads
- Ductile cast iron casting, powder coated orange finish
- Multiple-Disc Clutch - three hardened, plated steel clutch discs and one clutch spring

货号 NO	最大开口尺寸 MAX. OPENING	喉深 REACH	工作负载 LOAD LIMIT	尺杆 BAR	装箱数 QTY
3706-HD	6"	3"	450KG	1" x 5/16"	4
3712-HD	12"	3"	450KG	1" x 5/16"	4
3718-HD	18"	3"	450KG	1" x 5/16"	4
3724-HD	24"	3"	450KG	1" x 5/16"	4
3730-HD	30"	3"	450KG	1" x 5/16"	4
3736-HD	36"	3"	450KG	1" x 5/16"	4

轻型快速铁 F 夹 | LIGHT DUTY STEEL BAR CLAMP

为专业的木匠、木工、金属工人及喜欢自己动手的家装爱好者设计。此款 F 夹材质优良，效果专业。钢制尺杆材质坚韧、质地轻盈，抗锈蚀。多锁片能够使活动夹体紧紧固定在尺杆的任意位置。保护套可保护工件免受刮擦。由于能迅速调整活动夹头，F 夹常常替代 C 字夹被广泛使用。

Steel Bar Clamps are used by professional cabinet makers, carpenters, woodworkers, metalworkers, and with confidence by the do-it-yourself homeowner on weekend projects. Our clamps are proudly made using high quality materials for lasting value and great performance. Strong, lightweight steel bars are rust-resistant. Our own 'Multiple-Disc-Clutch' holds securely at any point along the bar. Protective pads keep your project free from marring. They come in three strengths: Heavy, Medium and Light-Duty. Steel Bar Clamps are often used in place of 'C-Clamps' because of their instant adjustability from the sliding head.

轻型快速铁 F 夹

- 冷拉钢丝杆，带特制平滑梯形螺纹
- 球墨铸铁夹体
- 表面橙色喷塑，防锈醒目
- 多锁片设计 - 3 片带涂层铁片，经硬化处理，一片弹簧片
- 优质钢材尺杆，表面电镀处理，防锈效果好

LIGHT DUTY STEEL BAR CLAMP

- Cold-drawn steel screw with special, smoothly cut Acme threads
- Ductile cast iron casting, powder coated
- Orange finish
- Multiple-Disc Clutch - three hardened, plated steel clutch discs and one clutch spring
- Round edge, high-carbon steel

货号 NO	最大开口尺寸 MAX. OPENING	喉深 REACH	工作负载 LOAD LIMIT	尺杆 BAR	装箱数 QTY
3704-LD	4"	2"	140KG	5/8" x 3/16"	4
3706-LD	6"	2"	140KG	5/8" x 3/16"	4
3708-LD	8"	2"	140KG	5/8" x 3/16"	4
3712-LD	12"	2"	140KG	5/8" x 3/16"	4

中型美式铁 F 夹

- 为专业的木匠、木工、金属工人及喜欢自己动手的家装爱好者设计。此款 F 夹材质优良，效果专业。钢制尺杆材质坚韧、质地轻盈，抗锈蚀。多锁片能够使夹体紧紧固定在尺杆的任意位置。保护套可保护工件免受刮擦。由于能迅速调整活动夹头，F 夹常常替代 C 字夹被广泛使用。

MEDIUM DUTY STEEL BAR CLAMP

- Steel Bar Clamps are used by professional cabinet makers, carpenters, woodworkers, metalworkers, and with confidence by the do-it-yourself homeowner on weekend projects. Our clamps are proudly made using high quality materials for lasting value and great performance. Strong, lightweight steel bars are rust-resistant. Our own 'Multiple-Disc-Clutch' holds securely at any point along the bar. Protective pads keep your project free from marring. They come in three strengths: Heavy, Medium and Light-Duty. Steel Bar Clamps are often used in place of 'C-Clamps' because of their instant adjustability from the sliding head.

货号 NO	最大开口尺寸 MAX. OPENING	喉深 REACH	工作负载 LOAD LIMIT	尺杆 BAR	装箱数 QTY
3706	6"	2-1/2"	270KG	1/4" x 3/4"	4
3712	12"	2-1/2"	270KG	1/4" x 3/4"	4
3718	18"	2-1/2"	270KG	1/4" x 3/4"	4
3724	24"	2-1/2"	270KG	1/4" x 3/4"	4
3730	30"	2-1/2"	270KG	1/4" x 3/4"	4
3736	36"	2-1/2"	270KG	1/4" x 3/4"	4



5" 深喉快速铁 F 夹 | 5" DEEP-REACH THROAT

如果使用中需要深度夹持，可选用深喉式夹具。并根据工件大小调节活动夹头，操作便捷。活动夹头可固定在尺杆的任意位置。

When your project calls for a deeper hold, reach for one of these deep reach bar clamps. All adjustments are made in the moveable sliding head making this clamp fast-acting and the sliding head holds securely at any point along the bar. Available in 5", 7", 9" reaches.

5" 深喉快速铁 F 夹

- 冷拉钢丝杆，带特制平滑梯形螺纹
- 丝杆和活络头经镀铜处理，防止焊渣粘结
- 球墨铸铁夹体，表面橙色喷塑，防锈醒目
- 优质钢材尺杆，表面电镀处理，防锈效果好

5" DEEP-REACH THROAT

- Cold-drawn steel screw with special, smoothly cut Acme threads
- Copper plated screws, handles and swivels to protect against weld splatter in welding jobs
- Ductile cast iron castings, powder coated Orange finish
- Round edge, high-carbon steel

货号 NO	最大开口尺寸 MAX. OPENING	喉深 REACH	工作负载 LOAD LIMIT	尺杆 BAR	装箱数 QTY
4512	12"	5"	540KG	1-3/8" x 5/16"	6
4524	24"	5"	540KG	1-3/8" x 5/16"	6
4536	36"	5"	540KG	1-3/8" x 5/16"	6
4548	48"	5"	540KG	1-3/8" x 5/16"	6
4560	60"	5"	540KG	1-3/8" x 5/16"	6



7" 深喉铁 F 夹

- 冷拉钢丝杆，带特制平滑梯形螺纹
- 丝杆和活络头经镀铜处理，防止焊渣粘结
- 球墨铸铁夹体，表面橙色喷塑，防锈醒目
- 优质钢材尺杆，表面电镀处理，防锈效果好

7" Deep-Reach Throat

- Cold-drawn steel screw with special, smoothly cut Acme threads
- Copper plated screws, handles and swivels to protect against weld splatter in welding jobs
- Ductile cast iron castings, powder coated Orange finish
- Round edge, high-carbon steel

货号 NO	最大开口尺寸 MAX. OPENING	喉深 REACH	工作负载 LOAD LIMIT	尺杆 BAR	装箱数 QTY
4712	12"	7"	540KG	1-1/2" x 3/8"	6
4724	24"	7"	540KG	1-1/2" x 3/8"	6
4736	36"	7"	540KG	1-1/2" x 3/8"	4
4748	48"	7"	540KG	1-1/2" x 3/8"	4
4760	60"	7"	540KG	1-1/2" x 3/8"	4
4772	72"	7"	540KG	1-1/2" x 3/8"	4



9" 深喉铁 F 夹

- 冷拉钢丝杆，带特制平滑梯形螺纹
- 丝杆和活络头经镀铜处理，防止焊渣粘结
- 球墨铸铁夹体，表面橙色喷塑，防锈醒目
- 优质钢材尺杆，表面电镀处理，防锈效果好

9" Deep Reach Throat

- Cold-drawn steel screw with special, smoothly cut Acme threads
- Copper plated screws, handles and swivels to protect against weld splatter in welding jobs
- Ductile cast iron castings, powder coated Orange finish
- Round edge, high-carbon steel

货号 NO	最大开口尺寸 MAX. OPENING	喉深 REACH	工作负载 LOAD LIMIT	尺杆 BAR	装箱数 QTY
4912	12"	9"	540KG	1-1/2" x 3/8"	6
4924	24"	9"	540KG	1-1/2" x 3/8"	4
4936	36"	9"	540KG	1-1/2" x 3/8"	4
4948	48"	9"	540KG	1-1/2" x 3/8"	4
4960	60"	9"	540KG	1-1/2" x 3/8"	4
4972	72"	9"	540KG	1-1/2" x 3/8"	4



铝合金棘轮 F 夹 | JORGENSEN GEAR CLAMP

此款夹具材质轻盈、操作快捷，适用于频繁夹紧和松开的作业。独特的工字型尺杆设计，夹紧力更强。操作快捷，夹持力可达 270KG。

The light weight and rapid action of our Gear Clamps make them ideal for projects which require constant use of clamping and unclamping. Its distinctive power bar design allows for rapid action, developing up to 600 lbs. of clamping force.



1. 此款夹具材质轻盈、操作快捷，适用于频繁夹紧和松开的作业。
2. 手动快速释放按钮，可快速松开

- Lightweight, rapid action ideal for projects which require constant use of clamping and unclamping"
- Handy quick release button releases the clamp instantly

货号 NO	最大开口尺寸 MAX. OPENING	喉深 REACH	工作负载 LOAD LIMIT	装箱数 QTY
38004	4"	3"	270KG	10
38008	8"	3"	270KG	10
38012	12"	3"	270KG	10

重型摇杆铁 F 夹 | STEEL I-BAR CLAMP

此款是最受欢迎的重型 F 夹，整体做工精良，使用寿命长。双铆钉固定夹头，超强工字钢铁杆，多合金钢锁片，可满足工业级高强度使用要求。适用于高校、车间、木工作业、金属加工作业、焊接作业等各种作业场合。

As our most popular heavy-duty steel bar clamps, with a resilient fixed-head design this "I"-bar design gives visible assurance of great strength and stiffness. Capable of withstanding the rigorous daily demands of school shops, commercial woodworking operations, metalworking factories, welding applications and serious woodworking applications.

重型摇杆铁 F 夹

- 强韧工字钢铁杆，丝杆冷拉成型，带特制平滑梯形螺纹
- 球墨铸铁夹体，表面橙色喷塑，防锈醒目

JORGENSEN INDUSTRIAL I-BAR CLAMPS

- Strong "I"-bar design "Cold-drawn steel screw with special, smoothly cut Acme threads
- Ductile cast iron castings, powder coated Orange finish

货号 NO	最大开口尺寸 MAX. OPENING	喉深 REACH	工作负载 LOAD LIMIT	尺杆 BAR	装箱数 QTY
7224	24"	1-3/4"	3170KG	1-1/2" x 7/16"	2
7230	30"	1-3/4"	3170KG	1-1/2" x 7/16"	2
7236	36"	1-3/4"	3170KG	1-1/2" x 7/16"	2
7248	48"	1-3/4"	3170KG	1-1/2" x 7/16"	2
7260	60"	1-3/4"	3170KG	1-1/2" x 7/16"	2
7272	72"	1-3/4"	3170KG	1-1/2" x 7/16"	2
7284	84"	1-3/4"	3170KG	1-1/2" x 7/16"	2
7296	96"	3-7/8"	3170KG	1-1/2" x 7/16"	2



锻打 F 夹

- 尺杆整体锻压，表面镀铬处理，抗腐蚀性更强
- 整体热处理，使用寿命更长

DROP FORGED BAR CLAMP

- Bar is 19/64" x 19/32" drop forged steel and chrome plated for superior rust resistance
- Acme screw is heat-treated to provide longer life

货号 NO	最大开口尺寸 MAX. OPENING	喉深 REACH	工作负载 LOAD LIMIT	尺杆 BAR	装箱数 QTY
75306	6"	3"	200KG	1/4" x 5/8"	2
75312	12"	3"	200KG	1/4" x 5/8"	2
75318	18"	3"	200KG	1/4" x 5/8"	2
75418	18"	4-1/2"	450KG	3/8" x 7/8"	2



Jorgensen 锻打重型 F 夹

此款是 DIY 人士、家装爱好者、木工、金属工和专业技工的理想之选。

JORGENSEN DROP FORGED HEAVY-DUTY BAR CLAMPS

Ideal for do it yourself, hobbyists, carpenters, cabinet makers, woodworkers, metalworkers and professional trades' people.

平行夹 | JORGENSEN BAR CLAMP

此款是 DIY 人士、工具爱好者、木工、专业人士的理想之选。适用于组装平面面板、箱子、橱柜、框架、板式门或其它要求直角、压力均匀的作业场合中。夹体保持平行，能确保工件为直角，避免造成工件表面变形。

Ideal for do-it-yourself, hobbyist, carpenters, cabinet makers, woodworkers, and professional trades people of all types. These clamps are great for flat panel, box, cabinet, frame and panel doors assemblies or any other project that requires square corners or evenly applied pressure. The jaws stay parallel to assure square corners and prevent work pieces from bowing or lifting.



1. 适用于组装平面面板、箱子、橱柜、框架、板式门或其它要求直角的作业场合中
2. 夹体保持平行，以保证工件直角，避免造成工件表面变形
3. 尾端带平衡装置，活动夹头移动顺畅
4. 有扩张功能

- For flat panel, box, cabinet, frame and panel doors assemblies or any other project that requires square corners
- Jaws stay parallel to assure square corners and prevent work pieces from bowing or lifting
- Built in clamp stand design; reversible for a Spreader function

货号 NO	最大开口尺寸 MAX. OPENING	喉深 REACH	工作负载 LOAD LIMIT	尺杆 BAR	装箱数 QTY
8012	12"	3-7/8"	450KG	1-3/16" x 3/8"	4
8018	18"	3-7/8"	450KG	1-3/16" x 3/8"	4
8024	24"	3-7/8"	450KG	1-3/16" x 3/8"	4
8030	30"	3-7/8"	450KG	1-3/16" x 3/8"	4
8036	36"	3-7/8"	450KG	1-3/16" x 3/8"	4
8048	48"	3-7/8"	450KG	1-3/16" x 3/8"	4
8060	60"	3-7/8"	450KG	1-3/16" x 3/8"	4
8072	72"	3-7/8"	450KG	1-3/16" x 3/8"	4

布带夹 | 15' RAPID ACTING BAND CLAMP

PONY 棘轮布带夹采用高强度尼龙织带，尺寸小巧，材质轻盈，可夹持圆形、矩形和不规则形状的工作。配有四个塑料护角，夹持斜面连接处时保护织带不受锋利边角磨损。自锁铝制凸轮及棘轮手柄，可实现牢固夹持及快速放线。钢制框架带黑色喷涂涂层，耐腐蚀性强。

The pony band clamp is a small and lightweight band clamp that has a high-strength nylon webbing allowing for clamping of round, rectangular and irregular shapes. Four plastic corners are furnished for clamping miter joints and to protect band from sharp areas. Positive hold is afforded by the self-locking aluminum cam and ratcheting handle which also allows instant release. The frame is steel with black, rust-resistant finish.

棘轮布带夹

- 高强度尼龙织带
- 配有四个塑料护角，夹持斜面连接处时使用
- 自锁铝制凸轮及棘轮手柄可实现牢固夹持

PONY BAND CLAMPS

- High-strength nylon webbing band
- Four plastic corners for clamping miter joints
- Positive hold, self-locking aluminum cam w/ratcheting handle

货号 NO	带长 BAND LENGTH	带宽 BAND WIDTH	工作负载 LOAD LIMIT	装箱数 QTY
1215	15'	1"	450KG	6



Pony 重型帆布布带夹

此款夹具适用于作业对象为圆形、矩形及不规则大型工件。双重自锁装置可使帆布带从任一端或两端拉紧，最后使用丝杆和摇杆手柄调整夹紧力度。夹体取材优质球墨铸铁，带橙色喷塑。5/8 英寸丝杆，摇杆手柄，使用方便。

Pony Heavy-Duty Band Clamps

This clamp solves the special problems of clamping large round, rectangular and irregular shapes. Dual self-locking mechanisms allows the canvas band to be pulled tight from either or both sides. The screw and handle are used for final clamping adjustment only. Castings are best-grade ductile cast iron with powder coated orange finish. The screw is 5/8 inch with crank-type handles.

重型帆布布带夹

- Dual self-locking mechanisms
- Castings are best-grade ductile cast iron with powder coated orange finish

CANVAS BAND CLAMP

- 双重自锁装置
- 夹体采用优质球墨铸铁，带橙色喷塑，防锈醒目

货号 NO	带长 BAND LENGTH	带宽 BAND WIDTH	工作负载 LOAD LIMIT	装箱数 QTY
6210	10'	2"	1270KG	6
6220	20'	2"	1270KG	6
6230	30'	2"	1270KG	6



布带夹

此款布带夹是夹持不规则形状物体的理想之选，例如圆形、多边形或者方形物体。护角为注塑件，尺寸为1"×1"，可避免造成工件表面损伤，适合放置在工件棱角处。

15' RAPID ACTING BAND CLAMP

This band clamp is great for awkward or irregular shaped clamping projects of odd shapes, including round, polygon or square. It includes plastic non-marring 1 inch by 1 inch jaws allow for great fit on corners.



货号 NO	带长 BAND LENGTH	带宽 BAND WIDTH	工作负载 LOAD LIMIT	装箱数 QTY
1225	15'	1"	450KG	6

重型可调式台面夹

重型可调式台面夹可安装在带 T 型槽和螺栓孔的工作台上，可对台面上的工件进行夹持。可安装在木质或金属台面，绕固定螺栓 360 度旋转。独特的方头丝杆设计，拧紧后可实现牢固夹持。

HEAVY-DUTY HOLD-DOWN CLAMP

Heavy-Duty hold-down clamps are designed for mounting anywhere a T-slot or machine bolt can be installed. These clamps offer the advantage of bench-top and machine table "surface" clamping. Rotates 360° around the bolt and can be mounted on wood or metal surfaces. A unique square-head screw offers wrench tightening for secure hold.

货号 NO	开口 OPENING	喉深 THROAT DEPTH	工作负载 LOAD LIMIT	装箱数 QTY
1834	4"	2-1/2"	12720KG	6

可调式台面夹

固定夹可在台面和机器工作面作业。360 度旋转使用。可安装在木质或金属台面。

HOLD-DOWN CLAMP

Hold-down clamps offer the advantage of benchtop and machine "surface" clamping. They are designed to rotate 360° around the holding bolt. Use anywhere on wood or metal surfaces.

货号 NO	开口 OPENING	喉深 THROAT DEPTH	工作负载 LOAD LIMIT	装箱数 QTY
1623	3"	1-3/4"	900KG	6



台面夹

多方位夹紧，将工件固定在台面上，使用简单。夹体为球墨铸铁，黑色喷塑。只需将夹具轻轻敲入台面上的孔内便可实现牢固夹持（需要预留孔）。

BENCH HOLD-DOWN CLAMP

A versatile, easy-to-use clamp for holding work in place on bench tops. Made of solid iron with a black baked enamel finish; holds work securely by simply tapping into hole in bench top (requires pre-drilling).

货号 NO	长度 LENGTH	喉深 THROAT DEPTH	预留孔 PRE-DRILLING HOLE	装箱数 QTY
1708	8"	4"	11/16"	6
1716	16"	8"	13/16"	6



Pony 弹簧夹 | PONY SPRING CLAMPS

强力弹簧结构，能快速张合，迅速夹紧和释放工件，夹持力度强。手柄造型流畅，握持舒适。防滑夹体呈最大角度张开时，两边可达到平行状态。各尺寸 PVC 护套一应俱全。夹体张开过程中会一直产生压力点，实现牢固夹持。

Spring action allows instant opening and closing where fast, easy application to or removal from the work is required and where spring pressure is adequate. Handle contours enable comfortable use. Non-slip jaws become parallel at maximum opening capacities. Poly-vinyl "protected" handles and/or jaw tip are available in all sizes. Point-of-pressure always remains near jaw tips throughout the entire range of openings, to hold where needed.

铁弹簧夹

- 市面上最耐用的弹簧夹之一
- 夹体开口度大，夹紧力强
- 材质轻盈，镀锌钢夹体

Pony Spring Clamps ADJUST-A-CLAMP

- One of the most durable clamps available
- Non-slip jaws become parallel at maximum opening capacities
- Light weight, zinc plated steel jaws



货号 NO	护套 PROTECTED HANDLE & TIPS	最大开口尺寸 MAX. OPENING	喉深 REACH	内箱数量	外箱数量
3201	不带 Without	1"	1-1/4"	0	200
3202	不带 Without	2"	2"	0	50
3203	不带 Without	3"	3"	0	25
3201-HT	带 With	1"	1-1/4"	6	36
3202-HT	带 With	2"	2"	6	36
3203-HT	带 With	3"	3"	6	36
3204-HT	带 With	4"	4"	0	6



可调塑料弹簧夹 | PONY SPRING CLAMPS ADJUST-A-CLAMP

开合迅速，方便易用。加强弹簧配合专利机构，可在1到50磅之间调节夹紧力。轻质塑料夹体手感舒适、经久耐用。夹子头部的护套转动灵活，能够轻松夹持不规则形状的工件并保护工件表面。此款是组装模型、手工艺品及其它作业类型的理想之选。

This clamp style features instant opening and closing as with the original PONY steel spring clamps. In addition, the heavy duty, tempered steel spring action allows pressure adjustment from 1 to 50 pounds of clamping force. Light-weight plastic jaws are designed for comfortable yet durable use. Soft, pivoting jaw pads easily hold irregular-shaped objects and protect work pieces. Ideal for gluing models, crafts and various other projects.

可调塑料弹簧夹

- 市面上最耐用的夹具之一
- 防滑夹体呈最大角度张开时，两边可达到平行状态

PONY SPRING CLAMPS ADJUST-A-CLAMP

- One of the most durable clamps available
- Non-slip jaws become parallel at maximum opening capacities

货号 NO	开口尺寸 OPENING	喉深 REACH	装箱数 QTY
3251	1"	1-1/4"	12
3252	2"	2-1/8"	12



棘轮夹

此款棘轮夹具有创新型穿腮结构，避免弯曲变形，保持夹口平直。专利的调整结构具有同类夹具中无与伦比的无极调节功能。双层材料手柄握持柔软舒适。

HAND CLAMP

These hand clamps have an innovative "box-joint" design which prevents twisting and keeps the jaws square and straight. The patented adjustment mechanism allows for infinite adjustments not found in competitors hand clamps. The comfortable "dual durometer" handles provide a comfortable soft grip and the 2" & 4" sizes have riveted jaws.

棘轮夹

- 多功能夹具，经济实用
- 加强尼龙材料，坚固耐用；软胶手柄，握持舒适
- 夹体为铆接结构

HAND CLAMP

- Affordable & versatile clamp
- Comfortable, "dual durometer" handles
- Riveted Jaws

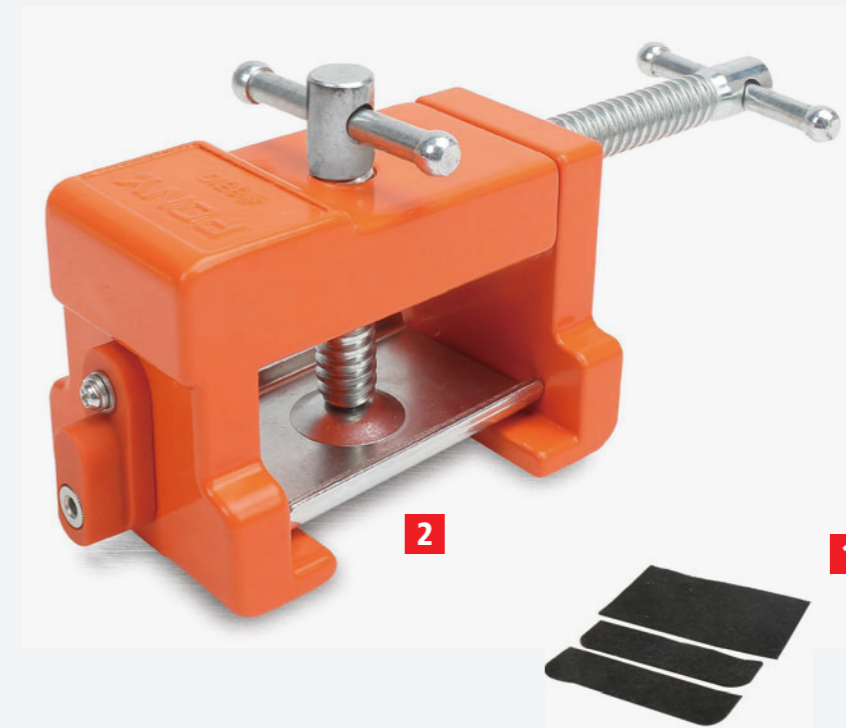
货号 NO	开口尺寸 OPENING	装箱数 QTY
32150	1-1/2"	10
32225	2"	10
32400	4"	10



Pony 门框夹 | PONY CABINET CLAW

专利设计，将组装框架橱柜的多个步骤化繁为简。与传统夹具相比，短时间内便可达到专业的作业效果。最大开口尺寸为4"，可安装两块各1-1/2"至2"宽，1-1/8"厚的木板。

This unique and patented tool combines the multiple steps of face frame cabinet installation into one easy process. Professional quality installation is achieved at a fraction of the time versus traditional clamps. Installs two stiles from 1-1/2" to 2" width and up to 1-1/8" thickness (each) with 4" opening capacity.



1. 夹持面带毛毡保护垫，起缓冲作用，可保护橱柜表面
2. 铝制夹体，带对齐固定铁片

- Protective rubber pads on clamp faces and alignment plate to cushion and protect cabinets
- Aluminum claws and alignment plate

货号 NO	描述 ITEM DESCRIPTION	装箱数 QTY
8510	Pony 门框夹 (2 pack) Pony Cabinet Claw (2 pack)	6
8511	Pony 门框夹 (1 pack) PPony Cabinet Claw (1 pack)	6

合页规 | PONY E-Z MARK HINGE MORTISE

合页规可在门窗边侧标记并切割出清晰的轮廓，便于合页的精准、专业安装。可精准测量深度，以便安装合页（平接铰链）。

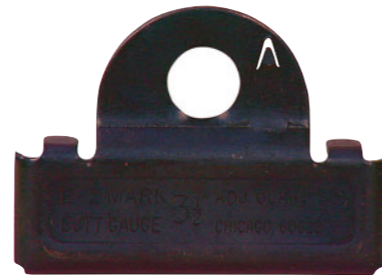
Hinge Mortises mark and cut sharp, clean profiles in wooden doors and jambs for accurate, professional hinge installation. All three sizes of these "hinge profile cutters" feature depth scribes for marking the correct depths of butt-hinge mortises.

合页规

- 用以安装合页（平接铰链），快速精准，简单方便
- 使得门的安装程序简单快捷
- 可在门窗边侧标记并切割出清晰的轮廓，便于合页的精准、专业安装

PONY E-Z MARK HINGE MORTISE

- For fast, easy, precise butt hinge installation
- Speeds and simplifies door hanging
- Marks and cuts sharp, clean profiles in doors and jambs for accurate hinge installation



货号 NO	描述 ITEM DESCRIPTION	尺寸 SIZE	装箱数 QTY
9030	3" 合页规 / Pony E-Z Mark / 3" Hinge Mortise	3"	12
9035	3 1/2" 合页规 / Pony E-Z Mark / 3 1/2" Hinge Mortise	3-1/2"	12
9040	4" 合页规 / Pony E-Z Mark / 4" Hinge Mortise	4"	12

可调角度角夹

可固定在 90° 角度，此款角夹可进行平接、斜角结合作业，适合作业的工件宽度可达 3 英寸。使用这款角夹，可调节结合处的角度，并对结合处进行销合、胶合及钉合。带两个沉头螺孔，角夹可在台面安装。台面上安装四个角夹便可形成矩形夹紧，矩形的尺寸可任意调节。

CORNER AND SPLICING CLAMP

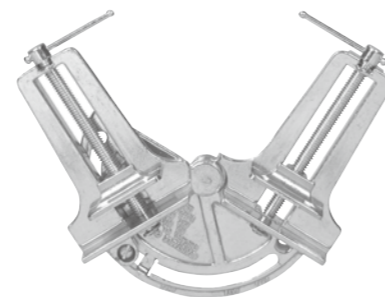
Fixed at 90 degrees, this clamps miter joints or butt joints, holds work up to 3 inches wide and leaves joints fully exposed for miter correction, doweling, gluing or nailing. Two countersunk holes permit the clamp to be benchtop mounted. Four clamps mounted as such provide a rectangular clamping fixture of unlimited size.

Pony 可调角度角夹

- 铝制框架经压铸成型，夹体可滑动
- 丝杆取材冷拉钢，经电镀处理，螺纹平滑
- 钢制可滑动横杆把手，使用方便

PONY CORNER CLAMPS

- Die cast aluminum frame and sliding jaws
- Screws are plated, cold-drawn steel with smoothly rolled threads
- Steel sliding-pin handles



货号 NO	描述 ITEM DESCRIPTION	装箱数 QTY
9133	3" 可调角度角夹 Pony 3" Corner and Splicing Clamp	6

双柄直角夹 | PONY E-Z MARK HINGE MORTISE

90° 固定角，此款角夹可进行平接、斜结作业，适合作业的工件宽度可达 3 英寸。使用这款角夹，可调节结合处的角度，并对结合处进行销合、胶合及钉合。带两个沉头螺孔，角夹可在台面安装。台面上安装四个角夹便可形成矩形夹紧，矩形的尺寸可任意调节。

Fixed at 90 degrees, this clamps miter joints or butt joints, holds work up to 3 inches wide and leaves joints fully exposed for miter correction, doweling, gluing or nailing. Two countersunk holes permit the clamp to be benchtop mounted. Four clamps mounted as such provide a rectangular clamping fixture of unlimited size.

双柄直角夹

- 铝制框架经压铸成型，夹体可滑动
- 丝杆取材冷拉钢，经电镀处理，螺纹平滑
- 钢制把手可滑动

CORNER AND SPLICING CLAMP

- Die cast aluminum frame and sliding jaws
- Screws are plated, cold-drawn steel with smoothly rolled threads
- Steel sliding-pin handles



货号 NO	描述 ITEM DESCRIPTION	装箱数 QTY
9166	双柄直角夹 Pony 3" 90 Degree Corner Clamp	6

单柄直角夹

此款角夹适合进行平接、T 型结合、斜接作业。2" 斜角结合 / 平接能力，1-1/8" T 形拼接能力；夹持中可对工件进行胶合、销合或者钉合作业。夹体锌合金压铸成型，表面喷塑处理，防止工件磨损；可针对不同厚度的工件调节夹体的开口度；大尺寸舒适手柄、机制螺纹，夹紧力强劲。赠送两个辅夹，以固定直角夹。

ANGLE CLAMP WITH 2 TABLE CLAMPS

This clamp will do miters, butt joints and T-joint. It is perfect for framing and cabinet assembly. Features 2" miter/butt joint capacity, 1-1/8" T-joint capacity, generous clearance for gluing, doweling or stapling material, plastic coated die cast jaws for non-marring, rear jaw swivels for easy adjustment on different material thickness, large comfortable handle and acme threads for strength.

单柄直角夹

- 夹持中可对工件进行胶合、销合或者钉合作业
- 带两个辅夹，可轻松安装在工作台表面
- 大尺寸手柄握持舒适，4-1/2" 钢制丝杆
- 夹体锌合金压铸成型，表面喷塑处理，防止工件磨损
- 可针对不同厚度的工件调节夹体的开口度

Pony Corner Clamps

- Generous clearance for gluing, dowelling or stapling material
- 2 Table clamps for easy mounting to work surface
- Large comfortable handle 4-1/2" steel screw
- Power coated non-marring die cast jaws
- Real jaw swivels for easy adjustment on different material thicknesses

货号 NO	描述 ITEM DESCRIPTION	装箱数 QTY
9180	单柄直角夹 Angle Clamp with 2 Table Clamps	6



四角框夹 | PONY 24" FOUR CORNER FRAMING CLAMP

四角框夹包括多节丝杆、轻质尼龙夹体、齿圈螺母；齿圈螺母可调节矩形夹体各边的长度。

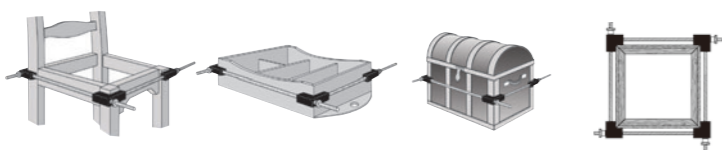
These complete framing clamp kits include lengths of threaded rods, light-weight plastic corners and thumb-nuts which allow size adjustments for rectangular clamping.

Pony 特色产品

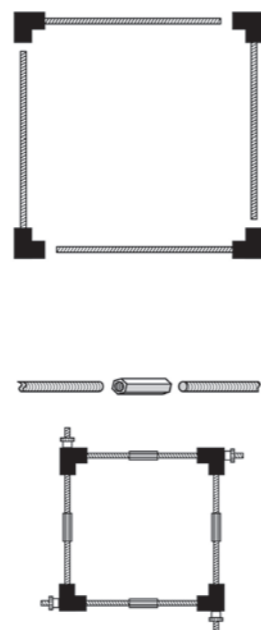
- 是装框、组装矩形工件的理想工具
- 组件：4 个黑色尼龙夹体、4 条电镀处理的钢质丝杆、4 颗锌合金齿圈螺母

PONY SPECIALTY PRODUCTS

- Ideal for fine framing & Assembly of square and rectangular work
- Contents: 4 Lexan corners, 4 plated steel threaded rods, 4 plated zinc alloy thumb-nuts



货号 NO	尺寸 SIZE	装箱数 QTY
9424	24"	12
9448	48"	12



PONY 可调相框夹

此款产品可组装相框等木质框架，可同时夹持四个角，操作简单。并根据相框的大小调节夹体的位置，可夹持的相框尺寸从 5" x 7" 到 26" x 30" 不等。折叠设计，节省空间。

PONY SELF-SQUARING FRAME CLAMP

This framing clam has a simple operation and clamps all four corners at the same time. The clamp is self-squaring and has reversible jaws for both small and large frames, this clamp frames from 5" x 7" to 26" x 30" and folds easily for compact storage.

货号 NO	描述 ITEM DESCRIPTION	装箱数 QTY
88094	可调相框夹 Pony Self-Squaring Frame Clamp	6



37 系列保护套

JORGENSEN WORK-PROTECTING BAR CLAMP PADS

塑料保护套材质柔软、经久耐用、弹性好。夹持木头、金属和塑料表面时可防止磨损工件，防滑、防黏，无需再使用木质保护板。

Soft, durable, plastic pads provide a resilient, non-mar, non-stick, non-slip protective cushion when clamping wood, metal and plastic surfaces; eliminate the need for wood blocks.

37 系列保护套

- 与 JORGENSEN 3700 系列和 3700-LD 系列 F 夹配套使用

JORGENSEN WORK-PROTECTING BAR CLAMP PADS

- Recommended for use with any JORGENSEN Style 3700 and Style 3700-LD Steel Bar Clamps.

货号 NO	适用	装箱数 QTY
7437	3700 系列和 3700-LD 系列	12
7437(临时)	3700-HD 系列	/



保护套组件

推荐与 JORGENSEN #3500、#7200, PONY#50、#52 货号的夹具配套使用。

PRO PIPE CLAMP FIXTURE FOR 3/4" BLACK PIPE

Recommended for use with JORGENSEN Bar Clamps #3500 and #7200, PONY Clamp Fixtures #50 and #52.

货号 NO	适用	装箱数 QTY
7456	#50、#52、#55、#3500、#7200	12



压紧丝杆

此款重型压紧丝杆是胶合板作业的理想工具。在各种粘合、胶合、焊接或者其他组合作业中可作为面板夹具或者定制夹具，特别适合工件宽幅较大时的作业。

PRESS SCREW

These heavy-duty press screws are ideal for making veneering frames. Make panel clamps and used for custom jigs for all types of gluing, veneering, welding or other assembly operations. Especially useful for deep-reach surface clamping.

保护套组件

- 大尺寸铸铁活络头，可拆卸设计。安装便捷，仅将螺纹衬套拧入 1" 的孔内，便可实现夹持
- 直径为 11/16" 的冷拉丝杆，带特制平滑梯形螺纹

PRO PIPE CLAMP FIXTURE FOR 3/4" BLACK PIPE

- Large, removable cast-iron swivels permit easy installation, while threaded bushings drive into a 1" hole.
- 11/16" diameter cold-drawn steel screw with special, smoothly cut Acme threads

货号 NO	长度 LENGTH	丝杆直径 SCREW DIAMETER	活络头接触面尺寸 SWIVEL FACE SIZE	装箱数 QTY
6709	9"	11/16"	1-3/8" x 1-5/8"	12
6712	9"	11/16"	1-3/8" x 1-5/8"	12
6718	9"	11/16"	1-3/8" x 1-5/8"	12



导杆式台虎钳

PONY 2 1/2" LIGHT-DUTY CLAMP-ON VISE

#13025 导杆式台虎钳专为家庭、车间中的一些轻型或者专业作业设计。携带方便，可轻松牢固安装在厚度不超过 2" 的工作台上。电镀丝杆，双导杆设计，操作更平稳。

The #13025 Clamp-On Vise is designed for light-duty home, shop and professional use. It is fully portable, yet mounts easily and securely on edges up to 2" thick. Plated-steel double guide-bars allow smooth operation.

导杆式台虎钳

- 夹体为灰口铁，表面橙色喷塑，防锈醒目
- 丝杆表面电镀处理

PONY VISE

- Castings are grey iron with powder coated Orange finish
- All hardware is plated steel



货号 NO	夹体宽度 JAW WIDTH	最大开口尺寸 MAX. OPENING	喉深 THROAT DEPTH	圆管夹持能力 PIPE VISE CAPACITY	装箱数 QTY
13025	3"	2-1/2"	1-1/2"	3/8"-1-3/4"	6

轻型方杆台钳

可固定在 90° 角度，此款角夹可进行平接、斜角结合作业，适合作业的工件宽度可达 3 英寸。使用这款角夹，可调节结合处的角度，并对结合处进行销合、胶合及钉合。带两个沉头螺孔，角夹可在台面安装。台面上安装四个角夹便可形成矩形夹紧，矩形的尺寸可任意调节。

PONY LIGHT-DUTY BENCH VISE WITH SWIVEL BASE

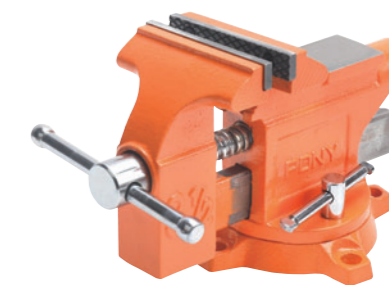
Fixed at 90 degrees, this clamps miter joints or butt joints, holds work up to 3 inches wide and leaves joints fully exposed for miter correction, doweling, gluing or nailing. Two countersunk holes permit the clamp to be benchtop mounted. Four clamps mounted as such provide a rectangular clamping fixture of unlimited size.

轻型方杆台钳

- 夹体为灰口铁，表面橙色喷塑，防锈醒目
- 丝杆表面电镀处理

PONY LIGHT-DUTY BENCH VISE WITH SWIVEL BASE

- Castings are grey iron with powder coated Orange finish
- All hardware is plated steel



货号 NO	夹体宽度 JAW WIDTH	最大开口尺寸 MAX. OPENING	喉深 THROAT DEPTH	圆管夹持能力 PIPE VISE CAPACITY	装箱数 QTY
23530	3-1/2"	3"	2"	5/8"-1-3/8"	2
24545	4-1/2"	3"	2-5/8"	5/8"-1-7/8"	2

木工台钳 | PONY 6 1/2" LIGHT-DUTY WOODWORKER'S VISE

此款轻质木工钳专为家庭或者车间轻型作业设计。主丝杆带机制螺纹，钢制双导杆经电镀处理，防锈效果好。

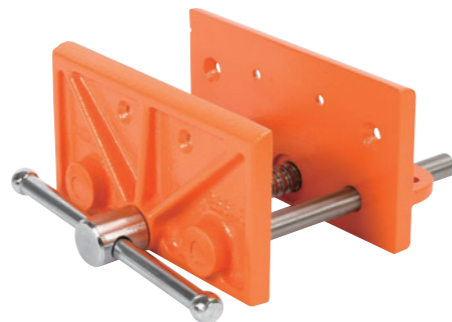
This light-weight PONY Woodworker's Vise is designed for light-duty home and shop use. The #26545 operates smoothly with Acme thread main screw and twin guide-bars of plated steel.

6.5" 木工台钳

- 夹体为灰口铁，表面橙色喷塑，防锈醒目
- 夹体带沉头螺孔，可安装木质保护板

PONY 6 1/2" LIGHT-DUTY WOODWORKER'S VISE

- Castings are grey iron with powder coated Orange finish
- Jaws are countersunk holes for attachment of wood facings



货号 NO	夹体宽度 JAW WIDTH	最大开口尺寸 MAX. OPENING	喉深 THROAT DEPTH	装箱数 QTY
26545	6-1/2"	4-1/2"	2"	4

7" 木工台钳

此款中型木工台钳带双导杆设计，丝杆转动灵活，实心台板定位块可增加夹持范围。

PONY 4" X 7" WOODWORKER'S VISE

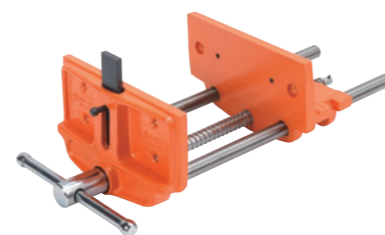
This light and medium-duty vise features double guide-bars, continuous screw action and solid steel dog.

7" 木工台钳

- 夹体为灰口铁，表面橙色喷塑，防锈醒目
- 夹体带沉头螺孔，可安装木质保护板

PONY 4" X 7" WOODWORKER'S VISE

- Castings are grey iron with powder coated Orange finish"
- Jaws are countersunk holes for attachment of wood facings



货号 NO	夹体宽度 JAW WIDTH	最大开口尺寸 MAX. OPENING	喉深 THROAT DEPTH	装箱数 QTY
27091	7"	8"	3"	1

重型美式台钳

夹持力度大，带旋转基座和锁定螺母，钳口优质钢材制造，经热处理，使用寿命长，大尺寸砧面经抛光处理，美观大方。

HEAVY-DUTY WORKSHOP BENCH VISE

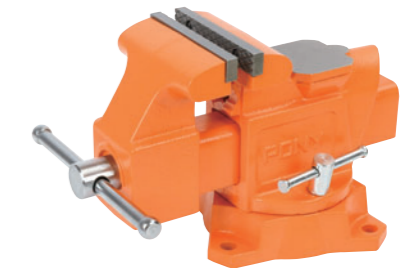
Style #29000 vises are economically priced and are an alternative to heavier duty bench vises but greater in strength than light-duty vises. These vises feature swivel bases with a lock-down nut, replaceable hardened-steel serrated jaw faces, large ground and polished anvils, permanent pipe jaws and large forming horns.

重型美式台钳

- 夹体为灰口铁，表面橙色喷塑，防锈醒目
- 钢制双导杆经电镀处理，主丝杆带机制螺纹
- 180°旋转基座

HEAVY-DUTY WORKSHOP BENCH VISE

- Castings are grey iron with powder coated Orange finish
- All hardware is plated steel; Acme thread main screw
- 180 degree swivel base



货号 NO	夹体宽度 JAW WIDTH	最大开口尺寸 MAX. OPENING	喉深 THROAT DEPTH	装箱数 QTY
29040	4"	3-1/2"	2-5/8"	1
29050	5"	4"	3-1/2"	1
29060	6"	5"	3-3/4"	1

5" 旋转多功能台钳

此款多功能台钳夹持力度强劲。夹体可旋转 360°。铸造钳体，表面橙色喷塑，丝杆表面经电镀处理，防锈效果好。

PONY 5" MULTI-PURPOSE VISE

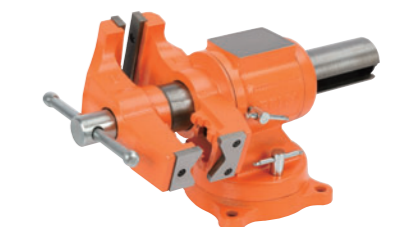
Our Multi-Purpose Bench Vise features rugged strength usually available only in more expensive vises. Jaws rotate and swivel a full 360 degrees. Ductile iron castings have a power-coated finish and all hardware is bright plated steel.

5" 旋转多功能台钳

- 夹体为灰口铁，表面橙色喷塑，防锈醒目
- 夹体带沉头螺孔，可安装木质保护板

PONY 5" MULTI-PURPOSE VISE

- Castings are grey iron with powder coated Orange finish
- Jaws are countersunk holes for attachment of wood facings



货号 NO	夹体宽度 JAW WIDTH	最大开口尺寸 MAX. OPENING	喉深 THROAT DEPTH	圆管夹持能力 PIPE VISE CAPACITY	装箱数 QTY
29055	5"	5"	2-5/8"	5/8"-2-1/2"	1

台板定位块 | PONY BENCH DOG

台板定位块，与木工台钳定位块配合使用，起到固定工件的作用。定位块适配台面上的 3/4" 钻孔。

2-1/4" Bench Dog- For securing work when used in conjunction with a vise dog; steel dog fits into 3/4" hole in bench top.

台板定位块

- 与木工钳前部夹体上的定位块配合使用，可牢牢夹紧台面上的工件
- 可安装在台面上 3/4" 的孔内
- 宽度：2-1/4" 深度：3/4"

PONY BENCH DOG

- Allows you to hold or secure your work on your bench work when used in conjunction with a woodworker's vise front jaw steel dog
- Fits into 3/4" hole which in bench top
- Width: 2-1/4", Depth: 3/4"



货号 NO	品名描述 DESCRIPTION	装箱数 QTY
1722	台板定位块 Bench top	4

平口钳

此款平口钳专为家装作业设计。可夹持工件范围广，并保证安全作业。平口钳各边有槽沟，可轻松安装在各类钻床上。

4" DRILL PRESS VISE

This PONY Drill Press Vise is designed for the home workshop. The 4" opening capacity will allow the user to clamp a wide range of products for safe drilling. This vise has slots along each side for ease of mounting to any drill press.

平口钳

- 夹体为灰口铁，表面喷塑处理
- 两边有槽沟，可轻松安装在钻床上

4" DRILL PRESS VISE

- Castings are grey iron with powder coated Orange finish
- Slots for easy mounting to any drill press



货号 NO	夹体宽度 JAW WIDTH	最大开口尺寸 MAX. OPENING	装箱数 QTY
29058	4"	4"	4

5" 重型快速台钳 | 5" QUICK-RELEASE VISE

专利快速锁紧机构，可快速调节，无需来回旋转手柄。此款为重型台虎钳，可处理各种棘手作业。底座可360度旋转，双锁扣设计，性能卓越。

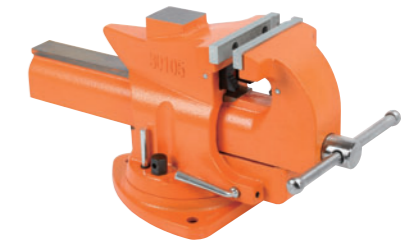
Our patented Quick Release mechanism means fast adjustments without having to screw the handle in and out. This vise is a heavy-duty model for the toughest applications, made with a 360 degree swivel base and dual locks for the ultimate in bench top performance.

5" 重型快速台钳

- 专利快速锁紧夹体，能迅速打开至要求开口尺寸
- 坚固耐用，专为重型作业设计，适用于各种棘手作业
- 360度旋转基座，双锁扣
- 抛光砧座，表面橙色喷塑，防锈醒目

5" QUICK-RELEASE VISE

- Patented quick-release jaw instantly releases to desired opening
- Heavy-duty rugged design for the toughest applications
- 360 degree swivel base with dual locks
- Polished anvil, powder coated Orange finish



货号 NO	夹体尺寸 JAW SIZE	最大开口尺寸 MAX. OPENING	喉深 THROAT DEPTH	圆管夹持能力 PIPE VISE CAPACITY	装箱数 QTY
30105	5"	7"	3"	1"-2-3/8"	/

重型快调木工台钳

此款台钳工艺精湛，质量优越。快速锁紧机构能使夹体迅速开合。前部夹体上可牢固安装固定块，与桌面上的固定块配合使用，可牢牢夹持大尺寸工件。机加工夹体夹持牢固，摇杆手柄方便调节。前后夹体配有沉头螺孔，可以根据需要安装木质保护板。此款台虎钳完美匹配 2-1/4" 台面，或自行加工配合其它厚度。

Jorgensen Professional Woodworking Vises

JORGENSEN Heavy-Duty Woodworker's Vises are unequalled in quality. They feature standard "Quick Action" release for fast opening and closing and a solid-steel dog in the front jaw which, used in conjunction with a bench stop, allows oversize work to be held securely on the bench top. Machined, toed-in jaws provide a solid grip, while northern hardwood handles provide balance and comfort. The front and back jaws have drilled and tapped or countersunk holes to allow for optional wood facings. These vises fit a 2-1/4" bench or can adapt to any thickness.

重型快调木工台钳

- 夹体为灰口铁，表面黑色喷塑处理
- 主螺杆带机制螺纹
- 双导杆取材冷拉钢
- 实心台板定位块可增加夹持范围
- 铸铜螺母

JORGENSEN 4" X 7" RAPID ACTING WOODWORKER'S VISE

- Castings are grey iron with powder coated Black finish
- Main screw is specially cut Acme threads
- Twin guide-bars are cold drawn steel
- Solid steel dog
- Roller nut insert is cast bronze alloy



货号 NO	夹体尺寸 JAW SIZE	最大开口尺寸 MAX. OPENING	重量 WEIGHT	装箱数 QTY
40709	4" x 7"	9"	36lbs	/
41012	4" x 10"	12"	39lbs	/

JORGENSEN 斜锯盒

JORGENSEN 11 1/4" PLASTIC MITER BOX & BACK SAW

此款斜锯盒为高强度尼龙材料，适合轻型作业，经久耐用。可进行 45°角、90°角切割，及 45°斜边切割。加大前端设计，使得斜锯盒跟工作台面贴合更稳定。带有沉孔，可牢固安装在工作台面上；底部开口，方便排出碎木和木屑。

This item is a durable, practical high-impact plastic miter box designed for light-duty projects. It will produce fixed 45° and 90° angles and 45° face miter cuts. Extended front lip design serves to steady the box against table top or bench. Features countersunk mounting holes for stable mounting and base openings for woodchips and sawdust.



货号 NO	品名描述 DESCRIPTION	装箱数 QTY
60112	斜锯盒 Miter Box	6
60115	斜锯盒带 14" 手板锯 Miter Box & 14" back saw	6

JORGENSEN[®] PONY[®]

271 Mayhill Street

Saddle Brook, New Jersey 07663, U.S.A

E-mail: sales@jorgensenponyclamp.com

www.jorgensenponyclamp.com

Toll Free: 1-800-776-2228

8:00 a.m. to 4:30 p.m., EST