





Part No.	Description	USD228
BK-3124	Supra 2JZ Billet Intake Manifold 90mm with 12 Injector ports	

color available:    



Part No.	Description	USD188
BK-3122	Supra 2JZ 2JZ-GTE Billet Intake Manifold 90mm with 6 Injector Port	

color available:    



Part No.	Description	USD188
BK-3123	Supra 2JZ-GE Billet Intake Manifold 90mm with 6 Injector port	

color available:    



Part No.	Description	USD188
BK-3112	Toyota 1JZ Billet Intake Manifold 90mm with 6 Injector	

color available:    



Part No.	Description	USD198
----------	-------------	--------

BK-3113	Toyota 1UZ Billet Intake Manifold 90mm	
---------	----------------------------------------	--

color available:    



Part No.	Description	USD208
----------	-------------	--------

BK-3114	Toyota 1FZ Billet Intake Manifold 90mm	
---------	----------------------------------------	--

color available:    



Part No.	Description	USD198
BK-3132	90mm RB25 Billet Intake Manifold	
Color Available:		



Part No.	Description	USD198
BK-3142	90mm RB26 Single Throttle Body Billet Intake Manifold with 6 injector	
Color Available:		



Part No.	Description	USD198
BK-3143	98mm RB26 Billet Intake Manifold	
Color Available:		



Part No.	Description	USD198
BK-3144	90mm RB20 Billet Intake Manifold	
Color Available:		



Part No.	Description	USD218
BK-3135	90mm RB30 Billet Intake Manifold	
Color Available:		



Part No.	Description	USD218
BK-3136	90mm TB48 Billet Intake Manifold	
Color Available:		





Part No.	Description	USD160
BK-3151	Honda Civic K20 Billet Intake Manifold 70mm	

color available:



Part No.	Description	USD160
BK-3161	Honda B16 B18 Billet Intake Manifold 70mm	

color available:



Part No.	Description	USD160
BK-3171	Mitsubishi EVO 1-3 Billet Intake Manifold 90mm	

Color Available:



Part No.	Description	USD 160
BK-3181	Mitsubishi EVO 4-9 Billet Intake Manifold 90mm	

Color Available:







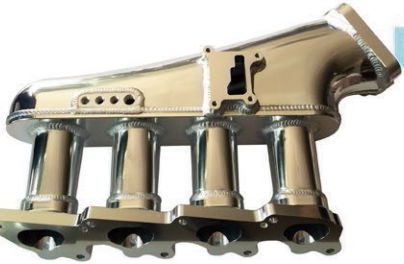
Part No.	Description	USD160
BK-3501	Volkswagen 1.8T Billet Intake Manifold 70mm	

color available:



Part No.	Description	USD175
BK-3145	Nissan S14 Billet Intake Manifold 80mm	

color available:



Part No.	Description	USD195
BK-3146	Nissan S13 Billet Intake Manifold 80mm	

Color Available:



Part No.	Description	USD380
BK-3149	Nissan GTR R35 Billet Intake Manifold	

Color Available:



Part No.	Description	USD180
BK-3511	Audi S4 Billet Intake Manifold 70mm	

Color Available:





Part No.	Description	Price
BK-3401	M50 M52 Billet Intake Manifold Front Facing 90mm with Fuel rail kit and Throttle body	USD330

Color Available:



Part No.	Description	Price
BK-3413 *	N54 Billet Intake Manifold 80mm with Fuel Rail Kit	USD270

Color Available:



Part No.	Description	Price
BK-3414 *	N55 Billet Intake Manifold 80mm with Fuel Rail Kit	USD330

Color Available:



Part No.	Description	Price
BK-3402 *	N52 Billet Intake Manifold Front Facing 90mm with Fuel Rail Kit	\$270

BK-3403 *	N54 Billet Intake Manifold Front Facing 90mm with Fuel Rail Kit	\$270
-----------	-----------------------------------------------------------------	-------

Color Available:



Part No.	Description	Price
BK-3405	S54 Billet Intake Manifold Front Facing 90mm	USD290

Color Available:



*Pls Note: Mark \* injector port design is using attached two short and long model injectors, both support.*



Part No.	Description	USD22
BK-RB26FR	Nissan RB26 Fuel Rail Kits	
BK-RB25FR	Nissan RB25 Fuel Rail Kits	
BK-2JZFR	Toyota 2JZ Fuel Rail Kits	
BK-1JZFR	Toyota 1JZ Fuel Rail Kits	



Part No.	Description	USD20
BK-K20FR	Honda Civic K20 Fuel Rail Kits	
BK-B16FR	Honda Civic B16 B18 Fuel Rail Kits	
BK-EVO49FR	Mitsubishi EVO 4-9 Fuel Rail Kits	



Part No.	Description	USD60
BK-2JZTB	Toyota 2JZ Throttle Body 90mm	
BK-1JZTB	Toyota 1JZ Throttle Body 90mm	
BK-EVO13TB	Mitsubishi EVO 1-3 Throttle Body 90mm	

USD60 Part No. RB25TB

Nissan RB25 RB26 Throttle Body 90mm

USD60 Part No. EVO49TB

Mitsubishi EVO 4-9 Throttle Body 90mm



Part No.	Description	USD55
BK-K20TB	Honda K20 Throttle Body 70mm	

Part No. BK-4808

Universal Electric Water Pump

USD79



Part No.	Description	USD55
BK-B16TB	Honda B16 B18 Throttle Body 70mm	



**New Enhanced !**

Part No.	Description	USD190
BK-7121	LS1/LS2/LS6 Tilted Throttle Body FAB Intake Manifold 92mm Low Version	
BK-7122	LS1/LS2/LS6 Tilted Throttle Body FAB Intake Manifold 102mm Low Version	

**Fit: Corvette C5(1997-2004), C6(2005-2007), Camaro**

Part No.	Description	USD190
BK-7321	LS3/L92 Tilted Throttle Body FAB Intake Manifold 92mm Low Version	
BK-7322	LS3/L92 Tilted Throttle Body FAB Intake Manifold 102mm Low Version	

**Fit: 2008-2013 Corvette C6, Camaro**

Part No.	Description	USD190
BK-7721	LS7 Tilted Throttle Body FAB Intake Manifold 92m Low Version	
BK-7722	LS7 Tilted Throttle Body FAB Intake Manifold 102mm Low Version	

**Fit: 2006-2013 Corvette C6-Z06; Camaro**

Part No.	Description
BK-2218	Fuel Rail Kits For LS1/LS2/LS6 FAB Manifold
BK-2219	Fuel Rail Kits For LS3 FAB Manifold
BK-2217	Fuel Rail Kits for LS7 Manifold

**USD40.00**

Part No.	Description
BK-3230-92	Throttle body 92mm for LS1/LS2/LS3/LS6/LS7
BK-3230-102	Throttle body 102mm for LS1/LS2/LS3/LS6/LS7

**USD65.00**



**New Enhanced !**

Part No.	Description	USD180
BK-3231	LS1/LS2/LS6 Throttle Body FAB Intake Manifold 92mm	
BK-3232	LS1/LS2/LS6 Throttle Body FAB Intake Manifold 102mm	



Part No.	Description	USD180
BK-3241	LS3/L92 Throttle Body FAB Intake Manifold 92mm	
BK-3242	LS3/L92 Throttle Body FAB Intake Manifold 102mm	



Part No.	Description	USD190
BK-3251	LS7 Throttle Body FAB Intake Manifold 92m	
BK-3252	LS7 Throttle Body FAB Intake Manifold 102mm	



Part No.	Description	USD195
BK-3233	LS1/LS2/LS6 Single Plane Carbureted FAB Intake Manifold	
BK-3234	LS1/LS2/LS6 Single Plane EFI FAB Intake Manifold	
BK-3243	LS3/L92 Single Plane Carbureted FAB Intake Manifold	
BK-3244	LS3/L92 Single Plane EFI FAB Intake Manifold	
BK-3253	LS7 Single Plane Carbureted FAB Intake Manifold	
BK-3254	LS7 Single Plane EFI FAB Intake Manifold	



Part No.	Description	USD210
BK-3237	LS1/LS2/LS6 Two Carbureted FAB Intake Manifold	
BK-3238	LS1/LS2/LS6 2x4 EFI FAB Intake Manifold	
BK-3247	LS3/L92 Two Carbureted FAB Intake Manifold	
BK-3248	LS3/L92 2x4 EFI FAB Intake Manifold	
BK-3257	LS7 Two Carbureted FAB Intake Manifold	
BK-3258	LS7 2x4150 EFI FAB Intake Manifold	





Part No.	Description	USD200
BK-4231	SB Chevy Single Plane FAB Intake Manifold	
BK-4232	SB Chevy Single Plane EFI FAB Intake Manifold	
BK-4241	SB Ford Single Plane FAB Intake Manifold	
BK-4242	SB Ford Single Plane EFI FAB Intake Manifold	



Part No.	Description	USD220
BK-4233	SB Chevy Two Carbureted FAB Intake Manifold	
BK-4234	SB Chevy 2x4150 EFI FAB Intake Manifold	
BK-4243	SB Ford Two Carbureted FAB Intake Manifold	
BK-4244	SB Ford 2x4150 EFI FAB Intake Manifold	



Part No.	Description	USD240
BK-4331	SB Chevy FAB Intake Manifold with Changeable Top Plate Use 4150 single plane plate or 4500 single plane plate	

### Option Finishing



Black/Red/Blue Anodize  
USD3.00/pc Extra



Bead Blasting Anodize  
USD10.00/pc Extra

### Other Options

Logo Laser Engrave USD3.00/pc Extra



Part No. BK-2220 Fuel Rail Kit for OE LS1/LS6 Manifold

Part No. BK-2222 Fuel Rail Kit for OE LS3 Manifold

USD40.00



Part No. Description

BK-3230-92 Throttle body 92mm for LS1/LS2/LS3/LS6/LS7

BK-3230-102 Throttle body 102mm for LS1/LS2/LS3/LS6/LS7

USD65.00



Part No. Description

BK-LS1 LS1 Fab Valve Cover PR with coil stands

BK-LS1-1 LS1 Fab Valve Cover PR without coil stands

USD58.00



Part No. BK-8081

LS Fabricated Coil Cover with Oil Filter

USD49

Part No. BK-8080

LS1/LS6 Billet Aluminum

Coil Bracket USD25



Part No. Description

BK-004R LS Fabricated Oil Pan Rear Sump

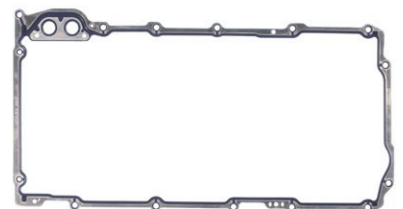
BK-004F LS Fabricated Oil Pan Front Sump

USD96.00

Part No. BK-005

Gasket for LS Oil Pan

USD8





USD63

Part No. BK-1100 Multi-spark CDI Box One Channel  
 Spark Energy: 115mJ per spark  
 Primary Voltage: 520-540 Volts  
 Secondary Voltage: 45,000 Volts  
 Spark Series Duration: 20 degree Crankshaft Rotation  
 RPM Range: 15,000 RPM with 14.4 Volts  
 Voltage Required: 12-15 Volts, 7 Volts Start  
 Current Draw: 0.7 Amp per 1,000 RPM



USD89

Part No. BK-1200 Multi-spark Digital CDI Box with Rev Limiter  
 Spark Energy: 135-145mJ per spark  
 Primary Voltage: 520-540 Volts  
 Secondary Voltage: 45,000 Volts  
 Spark Series Duration: 20 degree Crankshaft Rotation  
 RPM Range: 15,000 RPM with 14.4 Volts  
 Voltage Required: 12-15 Volts, 7 Volts Start  
 Current Draw: 0.7 Amp per 1,000 RPM



USD67

Part No. BK-1300 Multi-spark Digital CDI Box with Rev Limiter  
 Spark Energy: 115mJ per spark  
 Primary Voltage: 520-540 Volts  
 Secondary Voltage: 45,000 Volts  
 RPM Range: 15,000 RPM with 14.4 Volts  
 Voltage Required: 12-15 Volts, 7 Volts Start  
 Current Draw: 0.7 Amp per 1,000 RPM



USD250/270

Part No. BK-3200 Multi-spark CDI Box 2-channel  
 Part No. BK-3400 Multi-spark CDI Box 4-channel

Spark Energy: 170 mJ per spark  
 Primary Voltage: 480 Volts  
 Secondary Voltage: 45,000 Volts



USD370

**BK-3200/3400 IGNITION KITS**

Fit for: BMW, Mini, Toyota, Honda, Mitsubishi, Mazda,  
 Chevrolet, Buick, Ford, Volkswagen, Audi, Skoda,  
 Hyundai, Kia, Suzuki, Peugeot, Citroen, Renault, Smart



USD13

Part No.: BK-91  
 High Performance Coil  
 45000V, 95:1 turn ratio,  
 fit for BK-1100



USD30

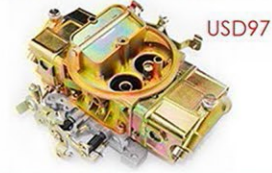
Part No.: BK-8252  
 High Performance Coil  
 50000V, 100:1 turn ratio,  
 fit for BK-1200/1100



**BK-1111 Carburetor 850CFM Double Pumps**



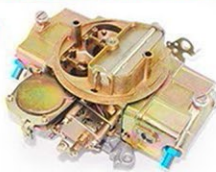
**BK-1115 Carburetor 750CFM Double Pumps Manual Choke**



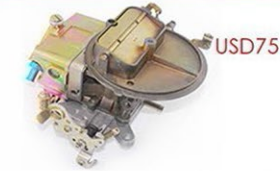
**BK-1116 Carburetor 750CFM Manual Choke Vacuum Secondaries**



**BK-1112 Carburetor 600CFM Manual Choke Vacuum Secondaries**



**BK-1113 Carburetor 350CFM Manual Choke**



**BK-1114 Carburetor 390CFM Manual Choke Vacuum Secondaries**



**SOME OTHER PARTS**





FUEL PUMP CHROME

Part No.:

BK-1130-100 100GPH

BK-1130-120 120GPH

BK-1130-140 140GPH

USD27

FUEL PUMP BILLET 400GPH

Part No.: BK-2806

USD79



USD18



Part No.: BK-1110-B

Casting Throttle Bracket Assembly Black

Part No.: BK-1110-E

Casting Throttle Bracket Assembly Blue



USD18

USD31



Part No.: BK-1110-1

Billet Throttle Bracket Assembly Silver

Part No.: BK-1110-2

Billet Throttle Bracket Assembly Red



USD31

USD16



Part No.: BK-1101

Fuel Line for Holley

Part No.: BK-1102

Fuel Line for Barry Grant Carbs

USD16



USD18



Part No.: BK-1103

Fuel Log for Holley

Part No.: BK-1104

Fuel Log for Barry Grant

USD18







Model No.: BK-1140-2

Billet Electric Water Pump for Chevy and Ford

USD98.00



Model No.: BK-1140-26P

SB Chevy Aluminum Electric  
Water Pump Polished

USD56.00



Model No.: BK-1140-26B

SB Chevy Aluminum Electric Water  
Pump Black Powder Code

USD56.00



Model No.: BK-1140-27P

BB Chevy Aluminum Electric  
Water Pump Polished

USD56.00



Model No.: BK-1140-27B

BB Chevy Aluminum Electric Water  
Pump Black Powder Code

USD56.00



Model No.: BK-1140-28P

SB Ford 289/302/351W Aluminum  
Electric Water Pump Polished

USD56.00



Model No.: BK-1140-28B

SB Ford 289/302/351W Aluminum  
Electric Water Pump Black Powder  
Code

USD56.00



Model No.: BK-1140-30B

BB Ford 429/460 Aluminum Electric  
Water Pump Black Powder Code

USD56.00



Model No.: BK-1140-28BP

SB Ford 289/302/351W Aluminum  
Electric Water Pump Black Powder  
Code with Plate

USD62.00



Model No.: BK-1140-29BP

SB Ford 351C Aluminum Electric  
Water Pump Black Powder Code  
with Plate

USD62.00



Model No.: BK-1140-30BP

BB Ford 429/460 Aluminum Electric  
Water Pump Black Powder Code  
with Plate

USD62.00



Plate, Water Pump  
Block-off, SB Ford  
302-351W

USD7.00



Plate, Water Pump  
Block-off, SB Ford  
351C 351M 400M

USD7.00



Plate, Water Pump  
Block-off, BB Ford  
429/460

USD7.00





USD45

Part No.: BK-28  
Tall Fabricated Valve Cover - Ford FE Short Bolt

Part No.: BK-6144  
Alum Fab Valve Cover Fits 1958-86 SB Chevy 283/350  
Constructed with 1/4 Thick Billet



USD39



USD47

Part No.: BK-6240  
Alum Fab Circle Track Fits 1987-97 SB Chevy 5.0-5.7L 305 350 Driver Side Cover HAS 1 3/8

Part No.: BK-6234  
Tall Fabricated V/C SBC Center Bolt no Hole



USD47



USD45

Part No.: BK-6244  
Fits 1965-95 BB Chevy 396/502 Constructed with 1/4 Thick Billet Rail

Part No.: BK-6248  
Finned Valve Cover SB/BB Chevy SB/BB Ford



USD49



USD45

Part No.: BK-4406P  
Fab Alum SB Chrysler V/C Fit - 318PR

Part No.: BK-4411  
Fab SB Chevy Flat Top 58-86 PR



USD37



USD45

Part No.: BK-4412  
Alum Fab BB Chevy Tall V/C W/Hole Smooth PR

Part No.: BK-4413  
SB Ford Tall Fab W/Hole



USD41



USD45

Part No.: BK-4414  
Fab Alum Chrysler V/C Fit - 440 PR Short Bolt  
**Part No.: BK-4414-1**  
Fit - 440 PR Long Bolt

Part No.: BK-6344  
Fits 1962-85 SB Ford V8 260/289/302/351W 5.0L  
Constructed with 1/4 Thick Billet Rail



USD41



USD45

Part No.: BK-6355  
Alum Fab BB Ford V/C Fits 429 460

Part No.: BK-8041  
Tall Fab Tapered Edge SB Ford 289/302/351W Long Bolt with Hole



USD49



USD35

Part No.: BK-4423  
Fits SB Ford Tall Polished  
W/Hole

Part No.: BK-4425  
Fits 429-460 BB Ford Plain  
Tall Polished w/Hole



USD36



USD38

Part No.: BK-4426  
SB Chevy Center Bolt  
Plain Tall Polished  
W/Hole

Part No.: BK-4426BM  
SB Chevy Center Bolt  
Ball Milled Tall Polished  
w/hole



USD39



USD36

Part No.: BK-4422  
BBC Plain Tall Plished  
w/hole

Part No.: BK-3264  
Fits 351C Ford Tall  
Polished w/hole



USD34



USD36

Part No.: BK-511  
Fits 1958-86 SB Chevy 283  
305 350 And 1987-95  
Pontiac/Camaro/Firebird  
350 Fined

Part No.: BK-6291  
Fits 1964 - up Ford V8  
289 / 302 Fined



USD30



USD37

Part No.: BK-711  
Fits 1987-up SB Chevy  
305 350 Center Bolt Fined

Part No.: BK-911  
Fits 1965-95 BB Chevy  
396 427 454 502 Fined



USD37



USD33

Part No.: BK-4421  
SB Chevy Plain Tall  
Polished w/hole

Part No.: BK-611  
Fined Oval Breather  
w/Rubber Gromment



USD16



USD17

Part No.: BK-811  
Fined Oval Breather  
w/PVC





\$85

Part No.: BK-8501

Universal Tilt Shift Steering Column Manual No Key 28"

Part No.: BK-8502

Universal Tilt Shift Steering Column Manual No Key 30"

Part No.: BK-8503

Universal Tilt Shift Steering Column Manual No Key 32"



\$95

Part No.: BK-8511

Universal Tilt Shift Steering Column Manual with Key 28"

Part No.: BK-8512

Universal Tilt Shift Steering Column Manual with Key 30"

Part No.: BK-8513

Universal Tilt Shift Steering Column Manual with Key 32"



\$95

Part No.: BK-8521

Universal Tilt Shift Steering Column Automatic No Key 28"

Part No.: BK-8522

Universal Tilt Shift Steering Column Automatic No Key 30"

Part No.: BK-8523

Universal Tilt Shift Steering Column Automatic No Key 32"



\$105

Part No.: BK-8531

Universal Tilt Shift Steering Column Automatic with Key 28"

Part No.: BK-8532

Universal Tilt Shift Steering Column Automatic with Key 30"

Part No.: BK-8533

Universal Tilt Shift Steering Column Automatic with Key 32"

Price on polish finishing, chrome add \$10.





Model No.: BK-1108  
SB Chevy Dual Plane  
Street Manifold

USD69



Model No.: BK-3202  
SB Chevy Dual Plane  
Street Manifold 55-86

USD68



Model No.: BK-3202H  
SB Chevy Votec Manifold 96-00

USD68



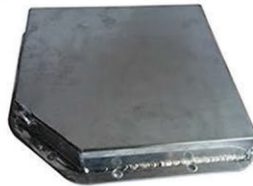
Model No.: BK-3212  
SB Ford Dual Plane Manifold

USD68



Model No.: BK-2221  
Transmission Pan

USD18



Model No.: BK-2223  
Fab Transmission Pan

USD20



Model No.: BK-4701BM  
Aluminum Linear Wire  
Loom Set Ball Milled

USD18



Model No.: BK-5334  
Shotgun Scoop Aluminum  
Billet Polished USD68

Model No.: BK-5336  
Shotgun Scoop Fined Polish  
USD70



Model No.: BK-4401  
SB Chevy Alloy Polished  
Timing Cover

USD10



Model No.: BK-3321-1  
2pcs Timing Cover

USD16



Model No.: BK-4402  
BB Chevy Alloy Polished  
Timing Cover

USD15



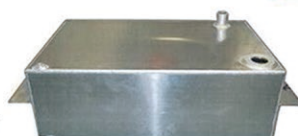
Model No.: BK-4404  
BB Chevy Belt Drive Kit

USD15



Model No.: RR-21, RR-22, RR-23,  
RR-24, RR-25, RR-26, RR-27, RR-28  
RR-29, RR-30, RR-31  
Chevy and Ford Universal Radiator  
21"22"23"24"25"26"27"28"29"30"31"

USD67~78



Model No.: BK-4008  
Fabricated Fuel Tank 90L

USD120



Model No.:  
CL-12S, CL-15S, CL-18S  
Cooler, 12", 15", 18" Single Hole  
**USD13/14.5/16**



Model No.:  
CL-12D, CL-15D, CL-18D  
Cooler, 12", 15", 18" Dual Pass  
**USD13/14.5/16**



Model No.: BK-4442-1 **USD23**  
12" Full Finned Air Cleaner Element  
Model No.: BK-4442-1W  
12"\*2" Washable Element All Finned



Model No.: BK-4442-2 **USD23**  
12" Half Finned Air Cleaner Element  
Model No.: BK-4442-1W  
12"\*2" Washable Element Half Finned



Model No.: BK-4443-1 **USD25**  
15" Full Finned Air Cleaner Element  
Model No.: BK-4443-1W  
15"\*2" Washable Element All Finned



Model No.: BK-4443-2 **USD25**  
15" Half Finned Air Cleaner Element  
Model No.: BK-4443-2W  
15"\*2" Washable Element Half Finned



Elite Style Alloy Air Cleaner Element  
Model No.: BK-6712  
12"\*2" Paper Polish/black  
Model No.: BK-6712-1  
12"\*2" Washable Polish/black



Elite Style Alloy Air Cleaner Element  
Model No.: BK-6714  
14"\*2" Paper Polish/black  
Model No.: BK-6714-1  
14"\*2" Washable Polish/black



Elite Style Alloy Air Cleaner Element  
Model No.: BK-6715  
15"\*2" Paper Polish/black  
Model No.: BK-6715-1  
15"\*2" Washable Polish/black



Model No.: BK-4442FP  
12"\*2" Paper Element Raise Flames  
Model No.: BK-4442FW  
12"\*2" Washable Element Raise Flames



Model No.: BK-4443FP  
15"\*2" Paper Element Raise Flame  
Model No.: BK-4443FW  
15"\*2" Washable Element Raise Flames



BK-8601-CTK  
7" SB Ford Crank Trigger  
**USD25**



BK-8602-CTK  
8" SB / BB Chevy Crank Trigger  
**USD30**



28" 30" 32" Tilt Column